

## ARG22645 anti-Fibroblasts + Epithelial cells antibody [D7-FIB]

Package: 100 µg

Store at: -20°C

### Summary

Product Description	<p>Mouse Monoclonal antibody [D7-FIB] recognizes Fibroblasts + Epithelial cells</p> <p>This antibody recognizes a ~112kDa molecule expressed on the cell surface of Human fibroblasts. The antigen is not expressed by peripheral blood cells, and is found at low levels on a minority of melanoma cell lines. Studies upon the antigen have shown it to be sensitive to SDS, but resistant to trypsin, tunicamycin and collagenase.</p> <p>In immunohistological studies Mouse anti Human Fibroblasts/Epithelial Cells antibody.</p> <p>Mouse anti Human Fibroblasts/Epithelial Cells antibody, clone D7-FIB has also been found to bind to epithelium, myoepithelium, smooth muscle and some leucocytes.</p> <p>Mouse anti Human Fibroblasts/Epithelial Cells antibody, clone D7-FIB is useful as a cell membrane marker to characterize chondrocyte differentiation giving a positive reaction with dedifferentiated Human chondrocytes, and negative with differentiated chondrocytes (van Osch et al. 2001).</p> <p>Mouse anti Human Fibroblasts/Epithelial Cells antibody, clone D7-FIB is routinely tested in flow cytometry on the KG1 cell line.</p>
Tested Reactivity	Hu
Tested Application	FACS, ICC/IF, IHC-Fr, IP
Host	Mouse
Clonality	Monoclonal
Clone	D7-FIB
Isotype	IgG2a
Target Name	Fibroblasts + Epithelial cells
Species	Human
Immunogen	Human foreskin fibroblasts.
Conjugation	Un-conjugated

### Application Instructions

Application table	Application	Dilution
	FACS	1:50 - 1:200
	ICC/IF	1:50 - 1:200
	IHC-Fr	1:100
	IP	Assay-dependent
Application Note	<p>FACS: Use 10 µl of the suggested working dilution to label 10<sup>6</sup> cells in 100 µl.</p> <p>* The dilutions indicate recommended starting dilutions and the optimal dilutions or concentrations should be determined by the scientist.</p>	

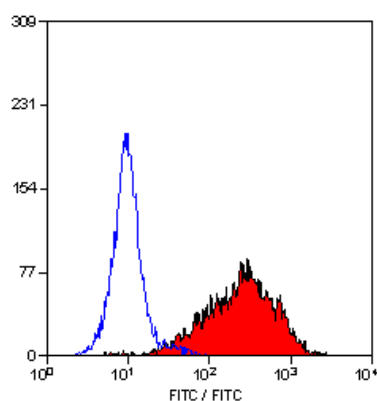
### Properties

Form	Liquid
------	--------

Purification	Purification with Protein G.
Buffer	PBS and 0.09% Sodium azide.
Preservative	0.09% Sodium azide
Concentration	1 mg/ml
Storage instruction	For continuous use, store undiluted antibody at 2-8°C for up to a week. For long-term storage, aliquot and store at -20°C or below. Storage in frost free freezers is not recommended. Avoid repeated freeze/thaw cycles. Suggest spin the vial prior to opening. The antibody solution should be gently mixed before use.
Note	For laboratory research only, not for drug, diagnostic or other use.

## Images

---



ARG22645 anti-Fibroblasts + Epithelial cells antibody [D7-FIB] FACS image

Flow Cytometry: KG1 cells stained with ARG22645 anti-Fibroblasts + Epithelial cells antibody [D7-FIB].