

## ARG22659 anti-CD107a / LAMP1 antibody [4E9/11]

Package: 100 µg  
Store at: -20°C

### Summary

Product Description	Mouse Monoclonal antibody [4E9/11] recognizes CD107a / LAMP1
Tested Reactivity	Pig
Tested Application	FACS, IHC-Fr, IHC-P, IP, WB
Host	Mouse
Clonality	Monoclonal
Clone	4E9/11
Isotype	IgG1
Target Name	CD107a / LAMP1
Species	Pig
Immunogen	Porcine alveolar macrophages.
Conjugation	Un-conjugated
Alternate Names	LGP120; CD107a; LAMPA; CD antigen CD107a; Lysosome-associated membrane glycoprotein 1; CD107 antigen-like family member A; LAMP-1; Lysosome-associated membrane protein 1

### Application Instructions

Application table	Application	Dilution
	FACS	1:25 - 1:50
	IHC-Fr	Assay-dependent
	IHC-P	Assay-dependent
	IP	Assay-dependent
	WB	Assay-dependent
Application Note	<p>FACS: Use 10 µl of the suggested working dilution to label 10<sup>6</sup> cells in 100 µl.</p> <p>IHC-P: Antigen Retrieval: Boil tissue section in Sodium citrate buffer (pH 6.0)</p> <p>* The dilutions indicate recommended starting dilutions and the optimal dilutions or concentrations should be determined by the scientist.</p>	

### Properties

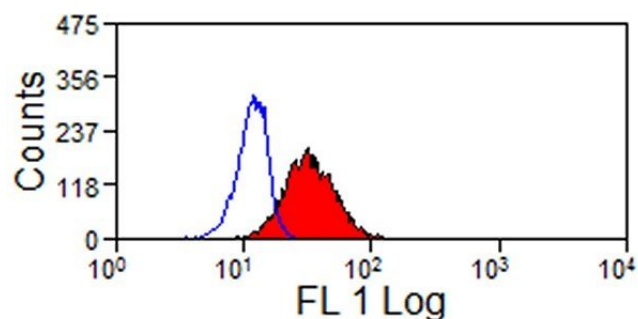
Form	Liquid
Purification	Purification with Protein G.
Buffer	PBS and 0.09% Sodium azide.
Preservative	0.09% Sodium azide
Concentration	1 mg/ml

Storage instruction	For continuous use, store undiluted antibody at 2-8°C for up to a week. For long-term storage, aliquot and store at -20°C or below. Storage in frost free freezers is not recommended. Avoid repeated freeze/thaw cycles. Suggest spin the vial prior to opening. The antibody solution should be gently mixed before use.
Note	For laboratory research only, not for drug, diagnostic or other use.

## Bioinformation

Gene Symbol	LAMP1
Gene Full Name	lysosomal-associated membrane protein 1
Background	The protein encoded by this gene is a member of a family of membrane glycoproteins. This glycoprotein provides selectins with carbohydrate ligands. It may also play a role in tumor cell metastasis. [provided by RefSeq, Jul 2008]
Function	Presents carbohydrate ligands to selectins. Also implicated in tumor cell metastasis. [UniProt]
Research Area	Cancer antibody; Cell Death antibody; Controls and Markers antibody; Developmental Biology antibody; Metabolism antibody; Neuroscience antibody; Signaling Transduction antibody; Lysosome Marker antibody
Calculated Mw	45 kDa
PTM	O- and N-glycosylated; some of the 18 N-linked glycans are polylactosaminoglycans. The glycosylation of N-76 is essential for Lassa virus entry into cells.

## Images



ARG22659 anti-CD107a / LAMP1 antibody [4E9/11] FACS image

Flow Cytometry: Pig peripheral blood granulocytes stained with ARG22659 anti-CD107a / LAMP1 antibody [4E9/11] followed by Goat anti-Mouse IgG (FITC). Membrane permeabilisation was used.