

ARG22668 anti-Rhizopus arrhizus antibody [WSSA-RA-1]

Package: 125 µg
Store at: -20°C

Summary

Product Description	Mouse Monoclonal antibody [WSSA-RA-1] recognizes Rhizopus arrhizus This antibody recognizes Rhizopus arrhizus and other members of the family Mucoraceae including Absidia corymbifera and Rhizomucor pusillus, reacting strongly with the cytoplasm of hyphae and also possibly with the walls and septae, where present.
Tested Reactivity	Fungi
Tested Application	ELISA, IHC-P, WB
Host	Mouse
Clonality	Monoclonal
Clone	WSSA-RA-1
Isotype	IgM
Target Name	Rhizopus arrhizus
Species	Fungi
Immunogen	Water-soluble somatic antigens (WSSA) from Rhizopus arrhizus.
Conjugation	Un-conjugated

Application Instructions

Application table	Application	Dilution
	ELISA	Assay-dependent
	IHC-P	1:50
	WB	Assay-dependent
Application Note	WB: This antibody detects a number diffuse bands of between ~ 14-110 kDa of Rhizopus arrhizus water-soluble somatic antigens. * The dilutions indicate recommended starting dilutions and the optimal dilutions or concentrations should be determined by the scientist.	

Properties

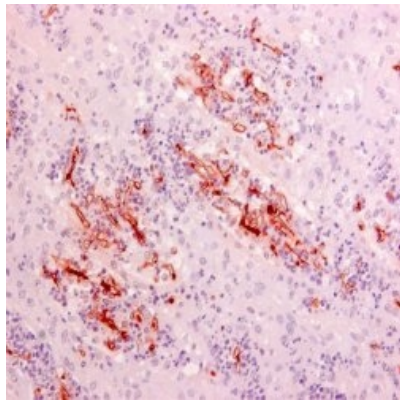
Form	Liquid
Purification	Purified by ammonium sulfate precipitation
Buffer	PBS and 0.09% Sodium azide.
Preservative	0.09% Sodium azide
Concentration	1 mg/ml
Storage instruction	For continuous use, store undiluted antibody at 2-8°C for up to a week. For long-term storage, aliquot and store at -20°C or below. Storage in frost free freezers is not recommended. Avoid repeated freeze/thaw cycles. Suggest spin the vial prior to opening. The antibody solution should be gently mixed

before use.

Note

For laboratory research only, not for drug, diagnostic or other use.

Images



ARG22668 anti-Rhizopus arrhizus antibody [WSSA-RA-1] IHC-P image

Immunohistochemistry: Paraffin-embedded Renal tissue presenting zygomyces stained with ARG22668 anti-Rhizopus arrhizus antibody [WSSA-RA-1].