

ARG22678 anti-Ly-6B.2 antibody [7/4] (PE)

Package: 50 tests

Store at: 4°C

Summary

Product Description	<p>PE-conjugated Rat Monoclonal antibody [7/4] recognizes Ly-6B.2</p> <p>This antibody recognizes Ly-6B.2 antigen. Ly-6B.2 is a ~25-30kDa GPI-anchored, heavily glycosylated protein expressed on neutrophils, inflammatory monocytes and some activated macrophages (Rosas et al. 2010). High levels of expression are seen in bone marrow, spleen, lung and lymph nodes. N-glycanase treatment of thioglycollate elicited peritoneal neutrophil lysates lowers the apparent molecular weight of Ly-6B.2 to ~15kDa (Rosas et al.2010).</p> <p>In common with other Ly-6 antigens Ly-6B.2 demonstrates a polymorphic expression on inbred mouse strains (Kimura et al. 1984). Rat anti mouse Ly-6B.2, clone 7/4 recognizes the Ly-6B.2 antigen in 129J; AKR; C57BL/6; C57BL/10; C58; DBA/2; NZB; NZW; SJL; MFI; Swiss (PO) Strains whilst A2G; A/Sn; ASW; BALB/c; C3H/HEH: CBA.</p> <p>T6T6 are negative or demonstrate very weak reactivity (Hirsch and Gordon 1982).</p> <p>Rat anti mouse Ly-6B.2 has been successfully used for the immunomagnetic depletion of neutrophils during the enrichment of primitive hematopoietic cells from bone marrow (Bertoncello et al. 1991) and the depletion of myeloid cells in vivo (Rosas et al. 2010).</p>
Tested Reactivity	Ms
Tested Application	FACS
Host	Rat
Clonality	Monoclonal
Clone	7/4
Isotype	IgG2a
Target Name	Ly-6B.2
Species	Mouse
Immunogen	Cultured bone marrow cells
Conjugation	PE

Application Instructions

Application table	Application	Dilution
	FACS	Neat

Application Note

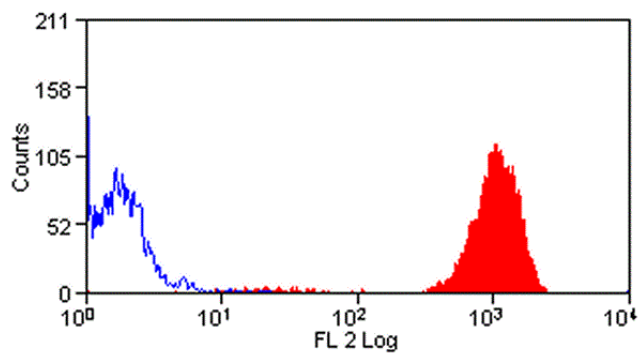
FACS: Use 10 µl of the suggested working dilution to label 10⁶ cells in 100 µl.
* The dilutions indicate recommended starting dilutions and the optimal dilutions or concentrations should be determined by the scientist.

Properties

Form	Liquid
Purification	Purification with Protein G.
Buffer	PBS, 0.09% Sodium azide, 1% BSA and 5% Sucrose.

Preservative	0.09% Sodium azide
Stabilizer	1% BSA and 5% Sucrose
Storage instruction	Aliquot and store in the dark at 2-8°C. Keep protected from prolonged exposure to light. Avoid repeated freeze/thaw cycles. Suggest spin the vial prior to opening. The antibody solution should be gently mixed before use.
Note	For laboratory research only, not for drug, diagnostic or other use.

Images



ARG22678 anti-Ly-6B.2 antibody [7/4] (PE) FACS image

Flow Cytometry: C57Bl/6 Mouse peripheral granulocytes stained with ARG22678 anti-Ly-6B.2 antibody [7/4] (PE).