

## ARG22711 anti-MHC Class II (Monomorphic) antibody [CVS20] (PE)

Package: 50 tests

Store at: 4°C

### Summary

Product Description	PE-conjugated Mouse Monoclonal antibody [CVS20] recognizes MHC Class II (Monomorphic) This antibody recognizes monomorphic equine MHC Class II and was classified at the International Equine Leucocyte Antigen Workshop. Clone CVS20 reacts with all equine B cells and 95% of equine T cells. The major histocompatibility complex (MHC) is a cluster of genes that are important in the immune response to infections. In horses, this is referred to as the equine leukocyte antigen (ELA) region.
Tested Reactivity	Hu, Bov, Dog, Hrs
Tested Application	FACS
Host	Mouse
Clonality	Monoclonal
Clone	CVS20
Isotype	IgG1
Target Name	MHC Class II (Monomorphic)
Species	Horse
Immunogen	3132 cells
Conjugation	PE

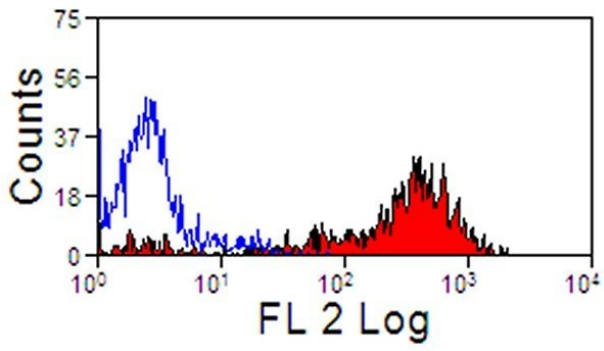
### Application Instructions

Application table	Application	Dilution
	FACS	Assay-dependent

**Application Note**  
FACS: Use 10 µl of the suggested working dilution to label 10<sup>6</sup> cells in 100 µl.  
\* The dilutions indicate recommended starting dilutions and the optimal dilutions or concentrations should be determined by the scientist.

### Properties

Form	Liquid
Purification	Purification with Protein A.
Buffer	PBS, 0.09% Sodium azide, 1% BSA and 5% Sucrose.
Preservative	0.09% Sodium azide
Stabilizer	1% BSA and 5% Sucrose
Storage instruction	Aliquot and store in the dark at 2-8°C. Keep protected from prolonged exposure to light. Avoid repeated freeze/thaw cycles. Suggest spin the vial prior to opening. The antibody solution should be gently mixed before use.
Note	For laboratory research only, not for drug, diagnostic or other use.



ARG22711 anti-MHC Class II (Monomorphic) antibody [CVS20] (PE)  
FACS image

Flow Cytometry: Equine peripheral blood lymphocytes stained with ARG22711 anti-MHC Class II (Monomorphic) antibody [CVS20] (PE).