

ARG22729
anti-CD18 / LFA1 beta antibody [CA1.4E9]Package: 50 µg
Store at: -20°C

Summary

Product Description	Mouse Monoclonal antibody [CA1.4E9] recognizes CD18 / LFA1 beta
Tested Reactivity	Hu, Bov, Cat, Dog, Hrs, Pig
Tested Application	FACS, ICC/IF, IHC-Fr, IP
Host	Mouse
Clonality	Monoclonal
Clone	CA1.4E9
Isotype	IgG1
Target Name	CD18 / LFA1 beta
Species	Dog
Conjugation	Un-conjugated
Alternate Names	MF17; LAD; CD antigen CD18; MF17; MAC-1; Cell surface adhesion glycoproteins LFA-1/CR3/p150,95 subunit beta; LCAMB; Integrin beta-2; Complement receptor C3 subunit beta; LFA-1; CD18

Application Instructions

Application table	Application	Dilution
	FACS	1:25 - 1:200
	ICC/IF	Assay-dependent
	IHC-Fr	Assay-dependent
	IP	Assay-dependent

Application Note FACS: Use 10 µl of the suggested working dilution to label 10⁶ cells or 100 µl whole blood.
* The dilutions indicate recommended starting dilutions and the optimal dilutions or concentrations should be determined by the scientist.

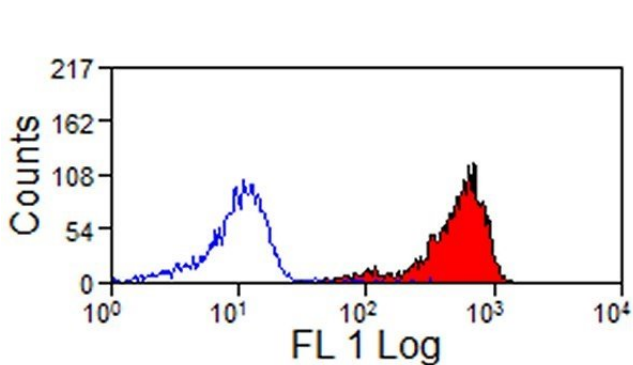
Properties

Form	Liquid
Purification	Purification with Protein G.
Buffer	PBS and 0.09% Sodium azide.
Preservative	0.09% Sodium azide
Concentration	1 mg/ml
Storage instruction	For continuous use, store undiluted antibody at 2-8°C for up to a week. For long-term storage, aliquot and store at -20°C or below. Storage in frost free freezers is not recommended. Avoid repeated freeze/thaw cycles. Suggest spin the vial prior to opening. The antibody solution should be gently mixed before use.

Bioinformation

Gene Symbol	ITGB2
Gene Full Name	integrin, beta 2 (complement component 3 receptor 3 and 4 subunit)
Background	This gene encodes an integrin beta chain, which combines with multiple different alpha chains to form different integrin heterodimers. Integrins are integral cell-surface proteins that participate in cell adhesion as well as cell-surface mediated signalling. The encoded protein plays an important role in immune response and defects in this gene cause leukocyte adhesion deficiency. Alternative splicing results in multiple transcript variants. [provided by RefSeq, Dec 2014]
Function	Integrin alpha-L/beta-2 is a receptor for ICAM1, ICAM2, ICAM3 and ICAM4. Integrins alpha-M/beta-2 and alpha-X/beta-2 are receptors for the iC3b fragment of the third complement component and for fibrinogen. Integrin alpha-X/beta-2 recognizes the sequence G-P-R in fibrinogen alpha-chain. Integrin alpha-M/beta-2 recognizes P1 and P2 peptides of fibrinogen gamma chain. Integrin alpha-M/beta-2 is also a receptor for factor X. Integrin alpha-D/beta-2 is a receptor for ICAM3 and VCAM1. Triggers neutrophil transmigration during lung injury through PTK2B/PYK2-mediated activation. [UniProt]
Calculated Mw	85 kDa
PTM	Both Ser-745 and Ser-756 become phosphorylated when T-cells are exposed to phorbol esters (PubMed:11700305). Phosphorylation on Thr-758 (but not on Ser-756) allows interaction with 14-3-3 proteins (PubMed:11700305, PubMed:16301335).

Images



ARG22729 anti-CD18 / LFA1 beta antibody [CA1.4E9] FACS image

Flow Cytometry: Dog peripheral blood monocytes stained with ARG22729 anti-CD18 / LFA1 beta antibody [CA1.4E9] followed by Rabbit F(ab')₂ anti-Mouse IgG (FITC).