

## ARG22772 anti-MHC Class II RT1B antibody [OX-6]

Package: 100 µg  
Store at: -20°C

### Summary

Product Description	<p>Mouse Monoclonal antibody [OX-6] recognizes MHC Class II RT1B</p> <p>This antibody recognizes a monomorphic determinant of the Rat RT1B MHC class II antigen present on B lymphocytes, dendritic cells, some macrophages and certain epithelial cells.</p> <p>Rat MHC Class II RT1B antibody, clone OX-6 does not react with the Rat BDIX strain due to a defect in RT1B expression (Male et al. 1987).</p> <p>The major histocompatibility complex (MHC) is a cluster of genes that are important in the immune response to infections. In rats, this complex is referred to as the RT1 region. In mice, this complex is referred to as the H-2 region.</p> <p>Mouse anti Rat MHC Class II RT1B antibody, clone OX-6 also cross reacts with a polymorphic determinant on mouse strains of the H-2 haplotypes k and s. Analysis of recombinant mouse strains has mapped the OX-6 determinant to the H-2I-A region (McMaster and Williams 1979 and Male et al. 1987).</p> <p>This product is routinely tested in flow cytometry on Rat splenocytes.</p>
Tested Reactivity	Ms, Rat
Tested Application	FACS, ICC/IF, IHC-Fr, IHC-P, WB
Host	Mouse
Clonality	Monoclonal
Clone	OX-6
Isotype	IgG1
Target Name	MHC Class II RT1B
Species	Rat
Immunogen	Rat thymocyte membrane glycoproteins.
Conjugation	Un-conjugated

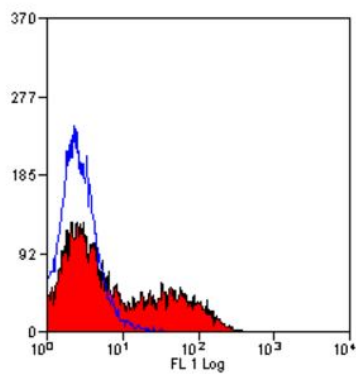
### Application Instructions

Application table	Application	Dilution
	FACS	1:50 - 1:100
	ICC/IF	Assay-dependent
	IHC-Fr	Assay-dependent
	IHC-P	1:50 - 1:100
	WB	Assay-dependent
Application Note	<p>FACS: Use 10 µl of the suggested working dilution to label 10<sup>6</sup> cells in 100 µl.</p> <p>IHC-P: Antigen Retrieval: Boil tissue section in Sodium citrate buffer (pH 6.0). PLP fixation is recommended for optimal results.</p> <p>* The dilutions indicate recommended starting dilutions and the optimal dilutions or concentrations should be determined by the scientist.</p>	

Properties

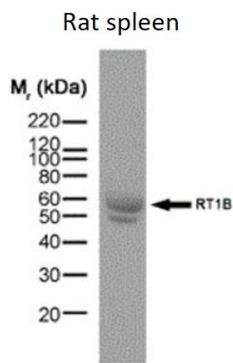
Form	Liquid
Purification	Purification with Protein G.
Buffer	PBS and 0.09% Sodium azide.
Preservative	0.09% Sodium azide
Concentration	1 mg/ml
Storage instruction	For continuous use, store undiluted antibody at 2-8°C for up to a week. For long-term storage, aliquot and store at -20°C or below. Storage in frost free freezers is not recommended. Avoid repeated freeze/thaw cycles. Suggest spin the vial prior to opening. The antibody solution should be gently mixed before use.
Note	For laboratory research only, not for drug, diagnostic or other use.

Images



ARG22772 anti-MHC Class II RT1B antibody [OX-6] FACS image

Flow Cytometry: Rat spleen cells stained with ARG22772 anti-MHC Class II RT1B antibody [OX-6].



ARG22772 anti-MHC Class II RT1B antibody [OX-6] WB image

Western blot: Rat spleen tissue lysate stained with ARG22772 anti-MHC Class II RT1B antibody [OX-6].