

## ARG22845 anti-CD16 antibody [G7]

Package: 100 µg  
Store at: -20°C

### Summary

<b>Product Description</b>	Mouse Monoclonal antibody [G7] recognizes CD16 Mouse anti Pig CD16, clone G7 recognizes porcine CD16 also known as Fc-gamma RIII or the low affinity IgG (Fc) receptor III. Clone G7 was clustered as CD16 at the Second International Workshop to Define Swine Cluster of Differentiation (CD) Antigens (Saalmuller et al. 1998). Mouse anti pig CD16 immunoprecipitates a protein of ~40 kDa from porcine neutrophils and NK cells (Wierda et al. 1993). Subsequent cloning and characterization of the G7 molecule indicated that G7 was the porcine homologue of Human CD16 (Halloran et al. 1994).
<b>Tested Reactivity</b>	Pig
<b>Tested Application</b>	FACS, ICC/IF, IP
<b>Host</b>	Mouse
<b>Clonality</b>	Monoclonal
<b>Clone</b>	G7
<b>Isotype</b>	IgG1
<b>Target Name</b>	CD16
<b>Species</b>	Pig
<b>Immunogen</b>	Porcine peripheral blood leucocytes
<b>Conjugation</b>	Un-conjugated
<b>Alternate Names</b>	FCRIIIA; FcRIIIa; CD antigen CD16a; Fc-gamma RIII-alpha; FCR-10; FcR-10; FCRIII; FCG3; Low affinity immunoglobulin gamma Fc region receptor III-A; FCGRIII; CD16; Fc-gamma RIIIa; IgG Fc receptor III-2; IMD20; CD16A; IGFR3; CD16a antigen; FCGR3; FcRIII; Fc-gamma RIII

### Application Instructions

<b>Application table</b>	<table border="1" style="width: 100%; border-collapse: collapse;"> <thead> <tr> <th style="width: 50%;">Application</th> <th style="width: 50%;">Dilution</th> </tr> </thead> <tbody> <tr> <td>FACS</td> <td>Neat</td> </tr> <tr> <td>ICC/IF</td> <td>Assay-dependent</td> </tr> <tr> <td>IP</td> <td>Assay-dependent</td> </tr> </tbody> </table>	Application	Dilution	FACS	Neat	ICC/IF	Assay-dependent	IP	Assay-dependent
Application	Dilution								
FACS	Neat								
ICC/IF	Assay-dependent								
IP	Assay-dependent								

**Application Note** FACS: Use 10 µl of the suggested working dilution to label 10<sup>6</sup> cells in 100 µl.  
\* The dilutions indicate recommended starting dilutions and the optimal dilutions or concentrations should be determined by the scientist.

### Properties

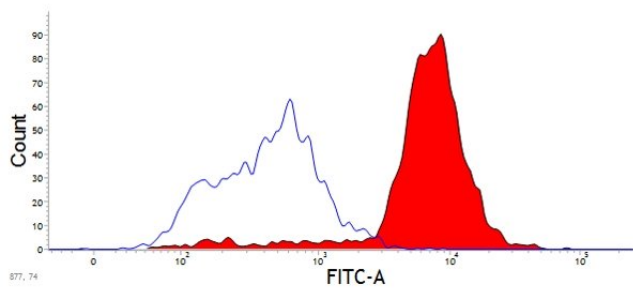
<b>Form</b>	Liquid
<b>Purification</b>	Purification with Protein A.
<b>Buffer</b>	PBS and 0.09% Sodium azide

Preservative	0.09% Sodium azide
Concentration	1 mg/ml
Storage instruction	For continuous use, store undiluted antibody at 2-8°C for up to a week. For long-term storage, aliquot and store at -20°C or below. Storage in frost free freezers is not recommended. Avoid repeated freeze/thaw cycles. Suggest spin the vial prior to opening. The antibody solution should be gently mixed before use.
Note	For laboratory research only, not for drug, diagnostic or other use.

## Bioinformation

---

Gene Symbol	FCGR3A
Gene Full Name	Fc fragment of IgG receptor IIIa
Background	This gene encodes a receptor for the Fc portion of immunoglobulin G, and it is involved in the removal of antigen-antibody complexes from the circulation, as well as other other antibody-dependent responses. This gene (FCGR3A) is highly similar to another nearby gene (FCGR3B) located on chromosome 1. The receptor encoded by this gene is expressed on natural killer (NK) cells as an integral membrane glycoprotein anchored through a transmembrane peptide, whereas FCGR3B is expressed on polymorphonuclear neutrophils (PMN) where the receptor is anchored through a phosphatidylinositol (PI) linkage. Mutations in this gene have been linked to susceptibility to recurrent viral infections, susceptibility to systemic lupus erythematosus, and alloimmune neonatal neutropenia. Alternatively spliced transcript variants encoding different isoforms have been found for this gene. [provided by RefSeq, Jul 2008]
Function	Receptor for the Fc region of IgG. Binds complexed or aggregated IgG and also monomeric IgG. Mediates antibody-dependent cellular cytotoxicity (ADCC) and other antibody-dependent responses, such as phagocytosis. [UniProt]
Highlight	Related products: <a href="#">CD16 antibodies</a> ; <a href="#">CD16 ELISA Kits</a> ; <a href="#">CD16 Duos / Panels</a> ; <a href="#">Anti-Mouse IgG secondary antibodies</a> ; Related news: <a href="#">Tumor-Infiltrating Lymphocytes (TILs)</a>
Research Area	Developmental Biology antibody; Immune System antibody; General Lymphocyte Marker Study antibody; Natural killer cells antibody
Calculated Mw	29 kDa
PTM	Glycosylated. Contains high mannose- and complex-type oligosaccharides. Glycosylation at Asn-180 is mandatory for high affinity binding to the Fc and for discrimination between fucosylated and afucosylated IgG glycoforms. The soluble form is produced by a proteolytic cleavage.



ARG22845 anti-CD16 antibody [G7] FACS image

Flow Cytometry: Porcine peripheral blood granulocytes stained with ARG22845 anti-CD16 antibody [G7] followed by Goat anti Mouse IgG (FITC).