

ARG22862 anti-Ly6C antibody [ER-MP20]

Package: 100 µg
Store at: -20°C

Summary

Product Description	Rat Monoclonal antibody [ER-MP20] recognizes Ly6C Rat anti Mouse Ly-6C antibody, clone ER-MP20 recognizes murine Ly-6C, a ~14 kDa differentiation antigen, expressed on macrophage/dendritic cell precursors in mid-stage development (late CFU-M, monoblasts and immature monocytes), granulocytes, and on a wide range of endothelial cells and subpopulations of B- and T-lymphocytes. Rat anti Mouse Ly-6C antibody, clone ER-MP20 is able to distinguish multiple mouse blood monocyte subsets: immature Ly-6Chi monocytes are recruited to acute peripheral inflammation and develop into Ly-6C+ exudate macrophages, whereas more mature Ly-6C-/lo monocytes are precursors for tissue macrophages and dendritic cells in steady state. Rat anti Mouse Ly-6C, clone ER-MP20 can be used in conjunction with clone ER-MP12 in two colour flow cytometric analysis, to identify different stages of myeloid progenitor cells in mouse bone marrow (Leenen et al. 1990).
Tested Reactivity	Ms
Tested Application	FACS, IHC-Fr, IP
Host	Rat
Clonality	Monoclonal
Clone	ER-MP20
Isotype	IgG2a
Target Name	Ly6C
Species	Mouse
Immunogen	Balb/c macrophage precursor cell hybrids.
Conjugation	Un-conjugated
Alternate Names	AA959465; Ly-6C1; AA682074; Ly-6C; Lymphocyte antigen 6C1; Ly6c

Application Instructions

Application table	Application	Dilution
	FACS	Neat
	IHC-Fr	Assay-dependent
	IP	Assay-dependent
Application Note	FACS: Use 10 µl of the suggested working dilution to label 10 ⁶ cells in 100 µl. * The dilutions indicate recommended starting dilutions and the optimal dilutions or concentrations should be determined by the scientist.	

Properties

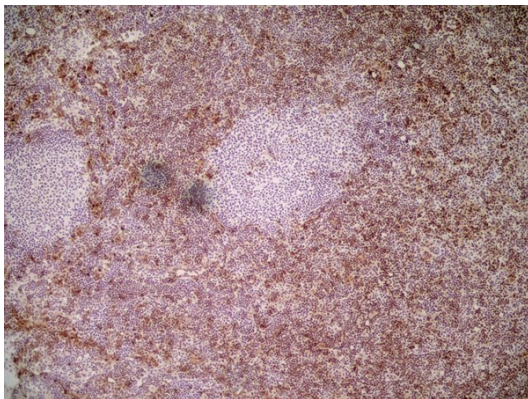
Form	Liquid
Purification	Purification with Protein G.

Buffer	PBS and 0.09% Sodium azide
Preservative	0.09% Sodium azide
Concentration	1 mg/ml
Storage instruction	For continuous use, store undiluted antibody at 2-8°C for up to a week. For long-term storage, aliquot and store at -20°C or below. Storage in frost free freezers is not recommended. Avoid repeated freeze/thaw cycles. Suggest spin the vial prior to opening. The antibody solution should be gently mixed before use.
Note	For laboratory research only, not for drug, diagnostic or other use.

Bioinformation

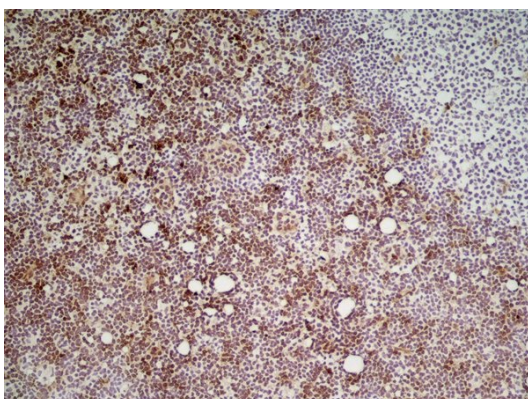
Gene Symbol	Ly6c1
Gene Full Name	lymphocyte antigen 6 complex, locus C1
Highlight	Related products: Ly6 antibodies ; Ly6 ELISA Kits ; Ly6 Duos / Panels ; Anti-Rat IgG secondary antibodies ; Related news: New antibody panels and duos for Tumor immune microenvironment Exploring Antiviral Immune Response
Research Area	Mouse Inflammatory Cell Marker antibody; Neutrophil Marker antibody; Mouse MDSC Marker antibody; Myeloid-derived suppressor cell antibody
Calculated Mw	14 kDa

Images



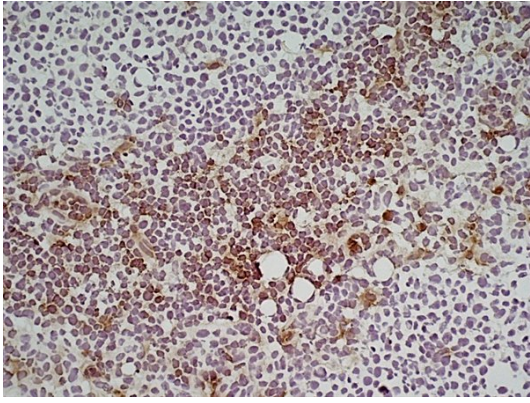
ARG22862 anti-Ly6C antibody [ER-MP20] IHC-Fr image

Immunohistochemistry: Mouse lymph node cryosection stained with ARG22862 anti-Ly6C antibody [ER-MP20] followed by HRP-conjugated Goat anti Rat IgG antibody. (Low power).



ARG22862 anti-Ly6C antibody [ER-MP20] IHC-Fr image

Immunohistochemistry: Mouse lymph node cryosection stained with ARG22862 anti-Ly6C antibody [ER-MP20] followed by HRP-conjugated Goat anti Rat IgG antibody. (Medium power).



ARG22862 anti-Ly6C antibody [ER-MP20] IHC-Fr image

Immunohistochemistry: Mouse lymph node cryosection stained with ARG22862 anti-Ly6C antibody [ER-MP20] followed by HRP-conjugated Goat anti Rat IgG antibody. (High power).