

ARG22863 anti-Ly 6C antibody [ER-MP20] (PE)

Package: 50 tests

Store at: 4°C

Summary

Product Description	PE-conjugated Rat Monoclonal antibody [ER-MP20] recognizes Ly 6C
Tested Reactivity	Ms
Tested Application	FACS
Host	Rat
Clonality	Monoclonal
Clone	ER-MP20
Isotype	IgG2a
Target Name	Ly 6C
Species	Mouse
Immunogen	Balb/c macrophage precursor cell hybrids.
Conjugation	PE
Alternate Names	FCRIIIA; FcRIIIa; CD antigen CD16a; Fc-gamma RIII-alpha; FcR-10; FcR-10; FcRIII; FCG3; Low affinity immunoglobulin gamma Fc region receptor III-A; FCGRIII; CD16; Fc-gamma RIIIa; IgG Fc receptor III-2; IMD20; CD16A; IGFR3; CD16a antigen; FCGR3; FcRIII; Fc-gamma RIII

Application Instructions

Application table	Application	Dilution
	FACS	Neat
Application Note	FACS: Use 10 µl of the suggested working dilution to label 10 ⁶ cells in 100 µl. * The dilutions indicate recommended starting dilutions and the optimal dilutions or concentrations should be determined by the scientist.	

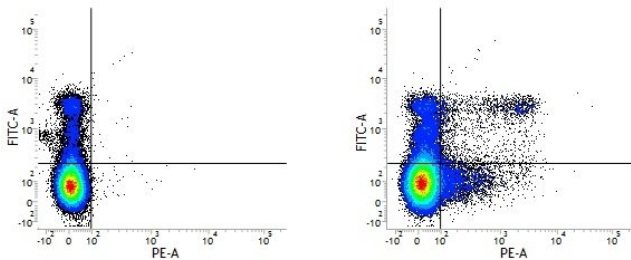
Properties

Form	Liquid
Purification	Purification with Protein G.
Buffer	PBS, 0.09% Sodium azide, 1% BSA and 5% Sucrose
Preservative	0.09% Sodium azide
Stabilizer	1% BSA and 5% Sucrose
Storage instruction	Aliquot and store in the dark at 2-8°C. Keep protected from prolonged exposure to light. Avoid repeated freeze/thaw cycles. Suggest spin the vial prior to opening. The antibody solution should be gently mixed before use.
Note	For laboratory research only, not for drug, diagnostic or other use.

Bioinformation

Gene Symbol	Ly6c1
Gene Full Name	lymphocyte antigen 6 complex, locus C1
Background	This gene encodes a receptor for the Fc portion of immunoglobulin G, and it is involved in the removal of antigen-antibody complexes from the circulation, as well as other antibody-dependent responses. This gene (FCGR3A) is highly similar to another nearby gene (FCGR3B) located on chromosome 1. The receptor encoded by this gene is expressed on natural killer (NK) cells as an integral membrane glycoprotein anchored through a transmembrane peptide, whereas FCGR3B is expressed on polymorphonuclear neutrophils (PMN) where the receptor is anchored through a phosphatidylinositol (PI) linkage. Mutations in this gene have been linked to susceptibility to recurrent viral infections, susceptibility to systemic lupus erythematosus, and alloimmune neonatal neutropenia. Alternatively spliced transcript variants encoding different isoforms have been found for this gene. [provided by RefSeq, Jul 2008]
Function	Receptor for the Fc region of IgG. Binds complexed or aggregated IgG and also monomeric IgG. Mediates antibody-dependent cellular cytotoxicity (ADCC) and other antibody-dependent responses, such as phagocytosis. [UniProt]
Research Area	Developmental Biology antibody; Immune System antibody; General Lymphocyte Marker Study antibody; Natural killer cells antibody
Calculated Mw	29 kDa
PTM	Glycosylated. Contains high mannose- and complex-type oligosaccharides. Glycosylation at Asn-180 is mandatory for high affinity binding to the Fc and for discrimination between fucosylated and afucosylated IgG glycoforms. The soluble form is produced by a proteolytic cleavage.

Images



ARG22863 anti-Ly 6C antibody [ER-MP20] (PE) FACS image

Flow Cytometry: Figure A. FITC conjugated Rat anti Mouse CD8 and PE-conjugated Rat IgG2a isotype control. Figure B. FITC conjugated Rat anti Mouse CD8 and ARG22863 anti-Ly 6C antibody [ER-MP20] (PE). All experiments performed on Mouse splenocytes.