

ARG22870 anti-CD169 / Siglec 1 antibody [3D6.112]

Package: 100 µg
Store at: -20°C

Summary

Product Description	Rat Monoclonal antibody [3D6.112] recognizes CD169 / Siglec 1
Tested Reactivity	Ms
Tested Application	CyTOF®-candidate, FACS, ICC/IF, IHC-Fr
Host	Rat
Clonality	Monoclonal
Clone	3D6.112
Isotype	IgG2a
Target Name	CD169 / Siglec 1
Species	Mouse
Immunogen	Purified murine sialoadhesin.
Conjugation	Un-conjugated
Alternate Names	CD169; Siglec-1; dJ1009E24.1; Sialic acid-binding Ig-like lectin 1; SIGLEC-1; CD antigen CD169; SN; Sialoadhesin

Application Instructions

Application table	Application	Dilution
	CyTOF®-candidate	Assay-dependent
	FACS	1:100 - 1:1000
	ICC/IF	Assay-dependent
	IHC-Fr	1:50 - 1:100
Application Note	IHC-Fr: Arigo recommend using fixation with either 2% paraformaldehyde or ethanol for optimal results. * The dilutions indicate recommended starting dilutions and the optimal dilutions or concentrations should be determined by the scientist.	

Properties

Form	Liquid
Purification	Purification with Protein G.
Buffer	PBS and 0.09% Sodium azide
Preservative	0.09% Sodium azide
Concentration	1 mg/ml
Storage instruction	For continuous use, store undiluted antibody at 2-8°C for up to a week. For long-term storage, aliquot and store at -20°C or below. Storage in frost free freezers is not recommended. Avoid repeated

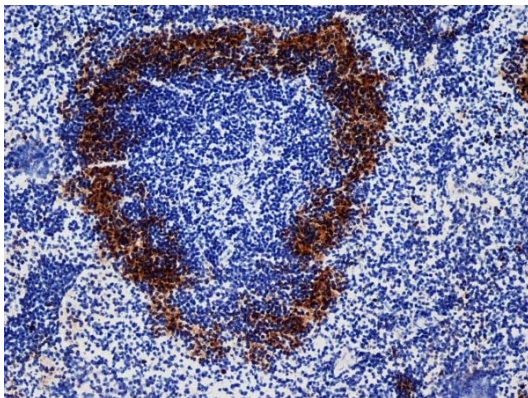
freeze/thaw cycles. Suggest spin the vial prior to opening. The antibody solution should be gently mixed before use.

Note For laboratory research only, not for drug, diagnostic or other use.

Bioinformation

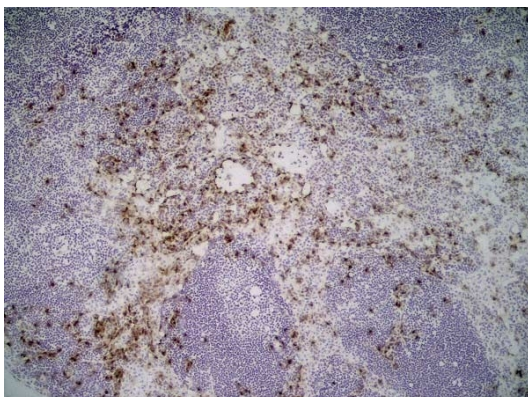
Gene Symbol	Siglec1
Gene Full Name	sialic acid binding Ig-like lectin 1, sialoadhesin
Background	This gene encodes a member of the immunoglobulin superfamily. The encoded protein is a lectin-like adhesion molecule that binds glycoconjugate ligands on cell surfaces in a sialic acid-dependent manner. It is a type I transmembrane protein expressed only by a subpopulation of macrophages and is involved in mediating cell-cell interactions. Alternative splicing produces a transcript variant encoding an isoform that is soluble rather than membrane-bound; however, the full-length nature of this variant has not been determined. [provided by RefSeq, Jul 2008]
Function	Acts as an endocytic receptor mediating clathrin dependent endocytosis. Macrophage-restricted adhesion molecule that mediates sialic-acid dependent binding to lymphocytes, including granulocytes, monocytes, natural killer cells, B-cells and CD8 T-cells. Preferentially binds to alpha-2,3-linked sialic acid (By similarity). Binds to SPN/CD43 on T-cells (By similarity). May play a role in hemopoiesis. [UniProt]
Highlight	Related products: CD169 antibodies ; CD169 ELISA Kits ; Anti-Rat IgG secondary antibodies ; Related news: CyTOF-candidate Antibodies
Calculated Mw	183 kDa

Images



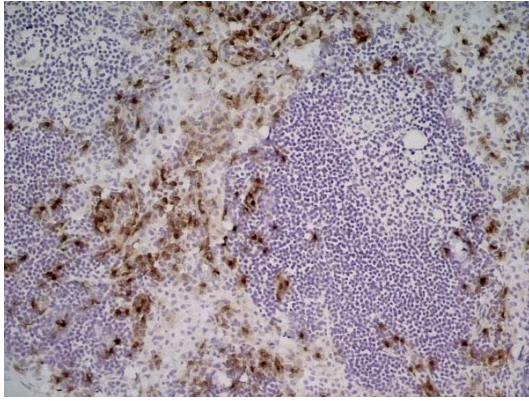
ARG22870 anti-CD169 / Siglec 1 antibody [3D6.112] IHC-Fr image

Immunohistochemistry: Frozen section of Mouse spleen stained with ARG22870 anti-CD169 / Siglec 1 antibody [3D6.112].



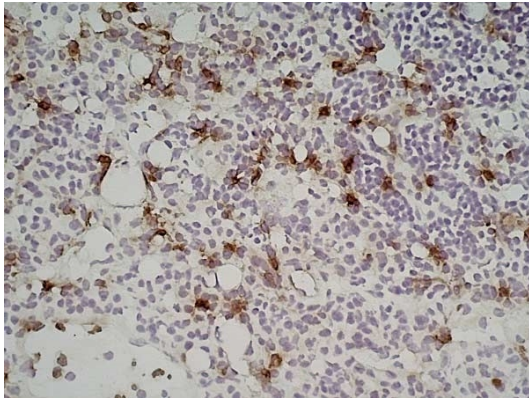
ARG22870 anti-CD169 / Siglec 1 antibody [3D6.112] IHC-Fr image

Immunohistochemistry: Mouse lymph node cryosection stained with ARG22870 anti-CD169 / Siglec 1 antibody [3D6.112] followed by Goat anti Rat IgG antibody as a detection reagent. (Low power).



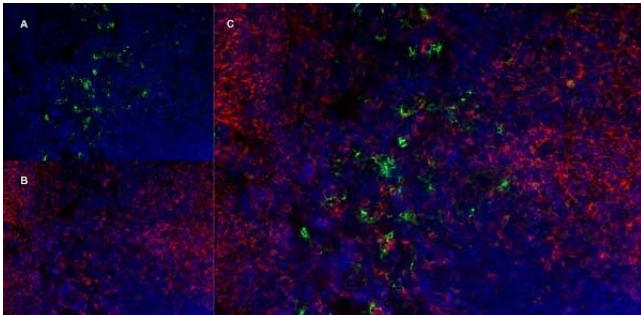
ARG22870 anti-CD169 / Siglec 1 antibody [3D6.112] IHC-Fr image

Immunohistochemistry: Mouse lymph node cryosection stained with ARG22870 anti-CD169 / Siglec 1 antibody [3D6.112] followed by Goat anti Rat IgG antibody as a detection reagent. (Medium power).



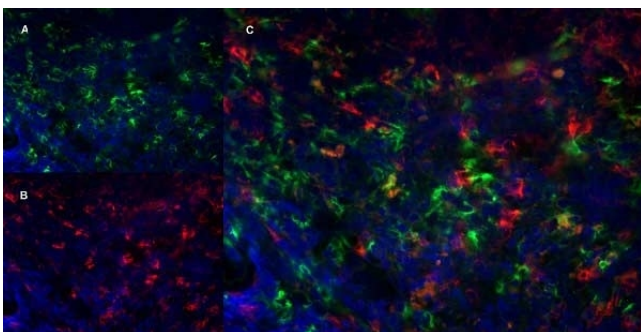
ARG22870 anti-CD169 / Siglec 1 antibody [3D6.112] IHC-Fr image

Immunohistochemistry: Mouse lymph node cryosection stained with ARG22870 anti-CD169 / Siglec 1 antibody [3D6.112] followed by Goat anti Rat IgG antibody as a detection reagent. (High power).



ARG22870 anti-CD169 / Siglec 1 antibody [3D6.112] IHC-Fr image

Immunohistochemistry: Mouse lymph node cryosection stained with ARG22870 anti-CD169 / Siglec 1 antibody [3D6.112], green in A and Rat anti Mouse CD8 antibody, clone YTS105.18, red in B. C is the merged image with nuclei counterstained blue using DAPI. (Low power).



ARG22870 anti-CD169 / Siglec 1 antibody [3D6.112] IHC-Fr image

Immunohistochemistry: Mouse lymph node cryosection stained with ARG22870 anti-CD169 / Siglec 1 antibody [3D6.112], green in A and Rat anti Mouse CD8 antibody, clone YTS105.18, red in B. C is the merged image with nuclei counterstained blue using DAPI. (High power).