

ARG22871 anti-CD169 / Siglec 1 antibody [3D6.112] (FITC)

Package: 50 µg
Store at: 4°C

Summary

Product Description	FITC-conjugated Rat Monoclonal antibody [3D6.112] recognizes CD169 / Siglec 1
Tested Reactivity	Ms
Tested Application	FACS
Host	Rat
Clonality	Monoclonal
Clone	3D6.112
Isotype	IgG2a
Target Name	CD169 / Siglec 1
Species	Mouse
Immunogen	Purified murine sialoadhesin.
Conjugation	FITC
Alternate Names	CD169; Siglec-1; dJ1009E24.1; Sialic acid-binding Ig-like lectin 1; SIGLEC-1; CD antigen CD169; SN; Sialoadhesin

Application Instructions

Application table	Application	Dilution
	FACS	1:100 - 1:1000

Application Note * The dilutions indicate recommended starting dilutions and the optimal dilutions or concentrations should be determined by the scientist.

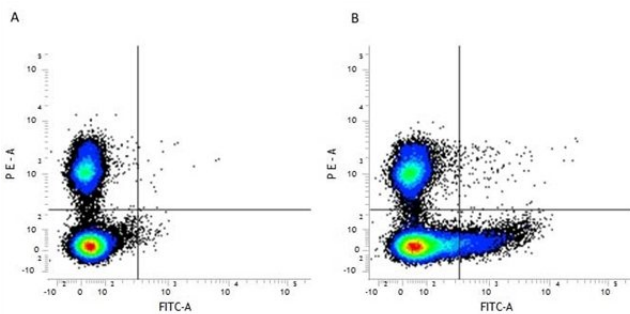
Properties

Form	Liquid
Purification	Purification with Protein G.
Buffer	PBS, 0.09% Sodium azide and 1% BSA
Preservative	0.09% Sodium azide
Stabilizer	1% BSA
Concentration	0.1 mg/ml
Storage instruction	Aliquot and store in the dark at 2-8°C. Keep protected from prolonged exposure to light. Avoid repeated freeze/thaw cycles. Suggest spin the vial prior to opening. The antibody solution should be gently mixed before use.
Note	For laboratory research only, not for drug, diagnostic or other use.

Bioinformation

Gene Symbol	Siglec1
Gene Full Name	sialic acid binding Ig-like lectin 1, sialoadhesin
Background	This gene encodes a member of the immunoglobulin superfamily. The encoded protein is a lectin-like adhesion molecule that binds glycoconjugate ligands on cell surfaces in a sialic acid-dependent manner. It is a type I transmembrane protein expressed only by a subpopulation of macrophages and is involved in mediating cell-cell interactions. Alternative splicing produces a transcript variant encoding an isoform that is soluble rather than membrane-bound; however, the full-length nature of this variant has not been determined. [provided by RefSeq, Jul 2008]
Function	Acts as an endocytic receptor mediating clathrin dependent endocytosis. Macrophage-restricted adhesion molecule that mediates sialic-acid dependent binding to lymphocytes, including granulocytes, monocytes, natural killer cells, B-cells and CD8 T-cells. Preferentially binds to alpha-2,3-linked sialic acid (By similarity). Binds to SPN/CD43 on T-cells (By similarity). May play a role in hemopoiesis. [UniProt]
Calculated Mw	183 kDa

Images



ARG22871 anti-CD169 / Siglec 1 antibody [3D6.112] (FITC) FACS image

Flow Cytometry: Figure A. RPE conjugated Rat anti Mouse CD45R and FITC conjugated Rat IgG2a isotype control. Figure B. RPE conjugated Rat anti Mouse CD45R and ARG22871 anti-CD169 / Siglec 1 antibody [3D6.112] (FITC). All experiments performed on murine bone marrow.