

ARG22943
anti-CD40 antibody [LOB7/6]Package: 100 µg
Store at: -20°C

Summary

Product Description	Mouse Monoclonal antibody [LOB7/6] recognizes CD40 Mouse anti Human CD40 antibody, clone LOB7/6 recognizes the human CD40 cell surface antigen, a 48kDa glycoprotein expressed by B lymphocytes and weakly by some monocytes. CD40 is involved in the process of B cell selection in germinal centres and is vital in T cell-B cell interactions.
Tested Reactivity	Hu, Dog
Tested Application	ELISA, FACS, IHC-Fr, IHC-P, IP
Host	Mouse
Clonality	Monoclonal
Clone	LOB7/6
Isotype	IgG2a
Target Name	CD40
Species	Human
Immunogen	CD40 Ig(Fc) fusion protein containing the EC region of Human CD40 and Fc region of Human IgG.
Conjugation	Un-conjugated
Alternate Names	CDw40; CD antigen CD40; Tumor necrosis factor receptor superfamily member 5; Bp50; CD40L receptor; CDW40; TNFRSF5; p50; B-cell surface antigen CD40

Application Instructions

Application table	Application	Dilution
	ELISA	Assay-dependent
	FACS	Neat - 1:5
	IHC-Fr	Assay-dependent
	IHC-P	Assay-dependent
	IP	Assay-dependent
Application Note	IHC-P: This product requires protein digestion pre-treatment of paraffin sections e.g. trypsin or pronase. FACS: Use 10 µl of the suggested working dilution to label 10 ⁶ cells in 100 µl. * The dilutions indicate recommended starting dilutions and the optimal dilutions or concentrations should be determined by the scientist.	

Properties

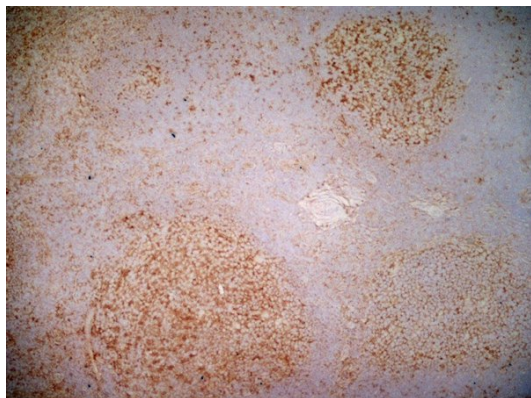
Form	Liquid
Purification	Purification with Protein A.
Buffer	Tris-buffered saline and 0.09% Sodium azide

Preservative	0.09% Sodium azide
Concentration	1 mg/ml
Storage instruction	For continuous use, store undiluted antibody at 2-8°C for up to a week. For long-term storage, aliquot and store at -20°C or below. Storage in frost free freezers is not recommended. Avoid repeated freeze/thaw cycles. Suggest spin the vial prior to opening. The antibody solution should be gently mixed before use.
Note	For laboratory research only, not for drug, diagnostic or other use.

Bioinformation

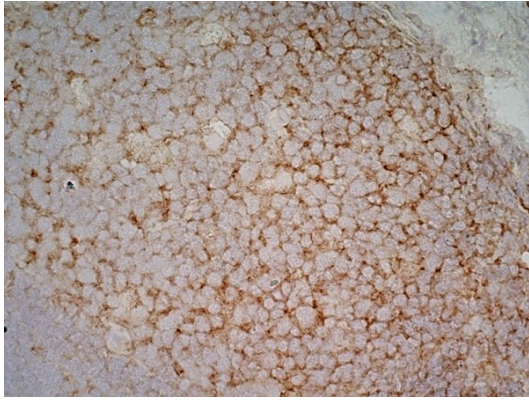
Gene Symbol	CD40
Gene Full Name	CD40 molecule, TNF receptor superfamily member 5
Background	This gene is a member of the TNF-receptor superfamily. The encoded protein is a receptor on antigen-presenting cells of the immune system and is essential for mediating a broad variety of immune and inflammatory responses including T cell-dependent immunoglobulin class switching, memory B cell development, and germinal center formation. AT-hook transcription factor AKNA is reported to coordinately regulate the expression of this receptor and its ligand, which may be important for homotypic cell interactions. Adaptor protein TNFR2 interacts with this receptor and serves as a mediator of the signal transduction. The interaction of this receptor and its ligand is found to be necessary for amyloid-beta-induced microglial activation, and thus is thought to be an early event in Alzheimer disease pathogenesis. Mutations affecting this gene are the cause of autosomal recessive hyper-IgM immunodeficiency type 3 (HIGM3). Multiple alternatively spliced transcript variants of this gene encoding distinct isoforms have been reported. [provided by RefSeq, Nov 2014]
Function	Receptor for TNFSF5/CD40LG. Transduces TRAF6- and MAP3K8-mediated signals that activate ERK in macrophages and B cells, leading to induction of immunoglobulin secretion. [UniProt]
Highlight	Related products: CD40 antibodies ; CD40 ELISA Kits ; CD40 Duos / Panels ; Anti-Mouse IgG secondary antibodies ; Related news: Lymphoma
Research Area	Cell Biology and Cellular Response antibody; Developmental Biology antibody; Immune System antibody; Pro-B Cell Marker antibody; Pre-B Cell Marker antibody
Calculated Mw	31 kDa

Images



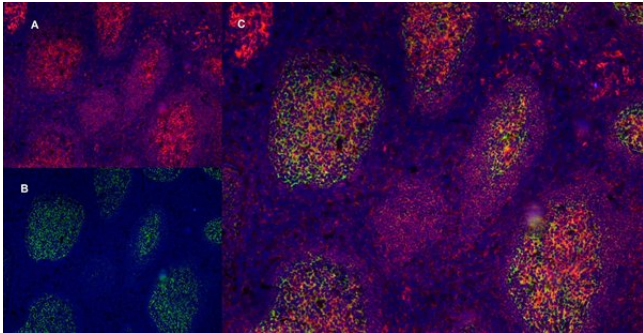
ARG22943 anti-CD40 antibody [LOB7/6] IHC-Fr image

Immunohistochemistry: Human tonsil cryosection stained with ARG22943 anti-CD40 antibody [LOB7/6]. (Low power).



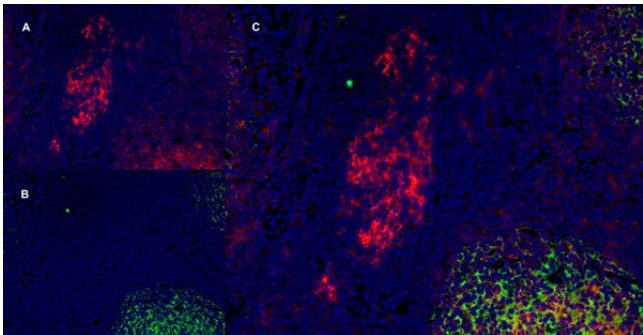
ARG22943 anti-CD40 antibody [LOB7/6] IHC-Fr image

Immunohistochemistry: Human tonsil cryosection stained with ARG22943 anti-CD40 antibody [LOB7/6]. (High power).



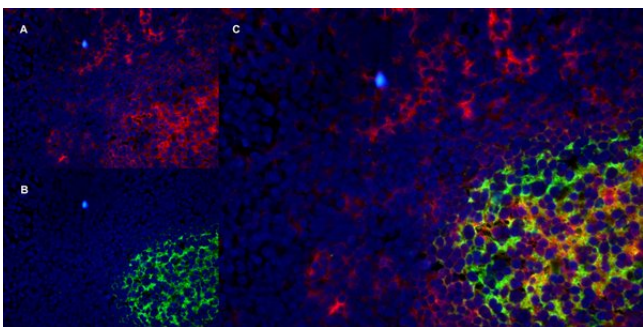
ARG22943 anti-CD40 antibody [LOB7/6] IHC-Fr image

Immunohistochemistry: Human tonsil cryosection stained with ARG22943 anti-CD40 antibody [LOB7/6], red in A and Mouse anti Human CD21 antibody, clone LB21, green in B. The merged image is C with nuclei counterstained blue using DAPI. (Low power).



ARG22943 anti-CD40 antibody [LOB7/6] IHC-Fr image

Immunohistochemistry: Human tonsil cryosection stained with ARG22943 anti-CD40 antibody [LOB7/6], red in A and Mouse anti Human CD21 antibody, clone LB21, green in B. The merged image is C with nuclei counterstained blue using DAPI. (Medium power).



ARG22943 anti-CD40 antibody [LOB7/6] IHC-Fr image

Immunohistochemistry: Human tonsil cryosection stained with ARG22943 anti-CD40 antibody [LOB7/6], red in A and Mouse anti Human CD21 antibody, clone LB21, green in B. The merged image is C with nuclei counterstained blue using DAPI. (High power).