

ARG23049 anti-CD3 antibody [KT3]

Package: 100 µg
Store at: -20°C

Summary

Product Description	Rat Monoclonal antibody [KT3] recognizes CD3 CD3 antibody, clone KT3 recognizes the mouse CD3 antigen expressed by mature T cells. Clone KT3 may be used to trigger proliferation and cytotoxicity of CD3 positive cells.
Tested Reactivity	Ms
Tested Application	FACS, IHC-Fr
Host	Rat
Clonality	Monoclonal
Clone	KT3
Isotype	IgG2a
Target Name	CD3
Species	Mouse
Immunogen	CBAT6 thymocytes.
Conjugation	Un-conjugated

Application Instructions

Application table	Application	Dilution
	FACS	1:50 - 1:100
	IHC-Fr	Assay-dependent

Application Note	<p>IHC-Fr: The epitope recognised by this antibody is reported to be sensitive to formaldehyde fixation and tissue processing. Arigo recommends the use of acetone fixation for frozen sections.</p> <p>FACS: Use 10 µl of the suggested working dilution to label 10⁶ cells in 100 µl.</p> <p>* The dilutions indicate recommended starting dilutions and the optimal dilutions or concentrations should be determined by the scientist.</p>
------------------	--

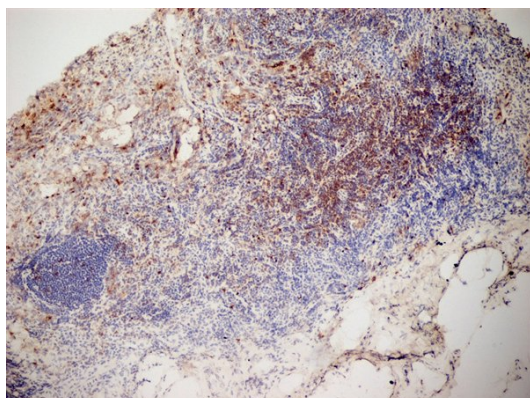
Properties

Form	Liquid
Purification	Purification with Protein G.
Buffer	PBS and 0.09% Sodium azide
Preservative	0.09% Sodium azide
Concentration	1 mg/ml
Storage instruction	For continuous use, store undiluted antibody at 2-8°C for up to a week. For long-term storage, aliquot and store at -20°C or below. Storage in frost free freezers is not recommended. Avoid repeated freeze/thaw cycles. Suggest spin the vial prior to opening. The antibody solution should be gently mixed before use.

Bioinformation

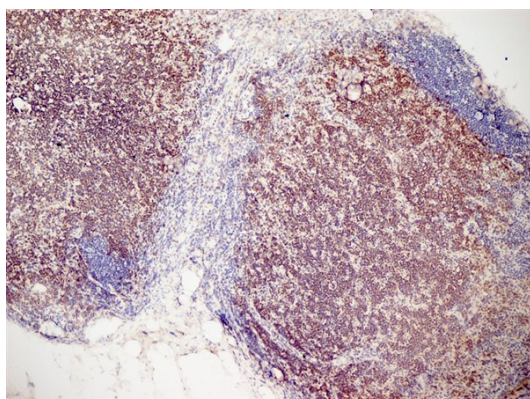
Gene Symbol	CD3D, CD3E, CD3G, CD247
Gene Full Name	CD3 Delta Subunit Of T-Cell Receptor Complex, CD3 Epsilon Subunit Of T-Cell Receptor Complex, CD3 Gamma Subunit Of T-Cell Receptor Complex, CD247 Molecule
Background	CD3 (cluster of differentiation 3) is a protein complex and T cell co-receptor that is involved in activating both the cytotoxic T cell (CD8+ naive T cells) and T helper cells (CD4+ naive T cells). It is composed of four distinct chains. In mammals, the complex contains a CD3 γ chain, a CD3 δ chain, and two CD3 ϵ chains. These chains associate with the T-cell receptor (TCR) and the CD3-zeta (ζ -chain) to generate an activation signal in T lymphocytes. The TCR, CD3-zeta, and the other CD3 molecules together constitute the TCR complex.
Highlight	<p>Related products:</p> <p>CD3 antibodies; CD3 ELISA Kits; CD3 Duos / Panels; CD3 recombinant proteins; Anti-Rat IgG secondary antibodies;</p> <p>Related news:</p> <p>New antibody panels and duos for Tumor immune microenvironment</p> <p>Tumor-Infiltrating Lymphocytes (TILs)</p> <p>Exploring Antiviral Immune Response</p>
Calculated Mw	20 kDa

Images



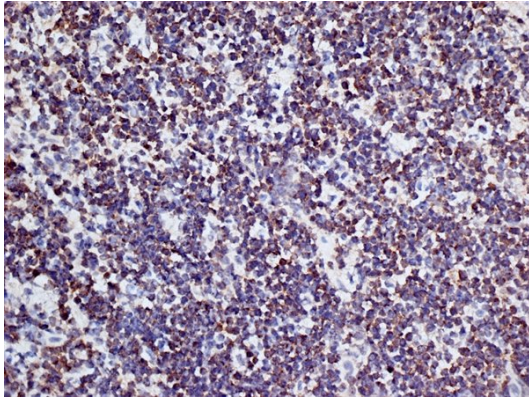
ARG23049 anti-CD3 antibody [KT3] IHC-Fr image

Immunohistochemistry: Mouse lymph node cryosection stained with ARG23049 anti-CD3 antibody [KT3] followed by HRP-conjugated Goat anti Rat IgG as a detection reagent. (Low power).



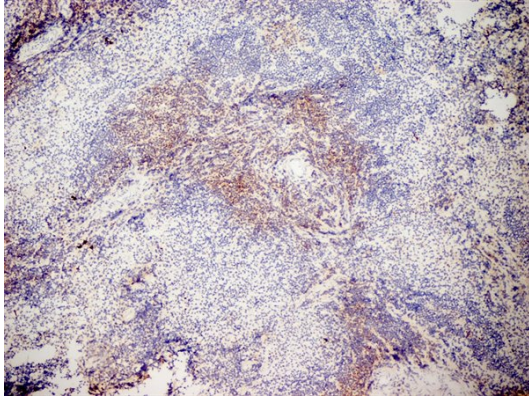
ARG23049 anti-CD3 antibody [KT3] IHC-Fr image

Immunohistochemistry: Mouse lymph node cryosection stained with ARG23049 anti-CD3 antibody [KT3] followed by HRP-conjugated Goat anti Rat IgG as a detection reagent. (Low power).



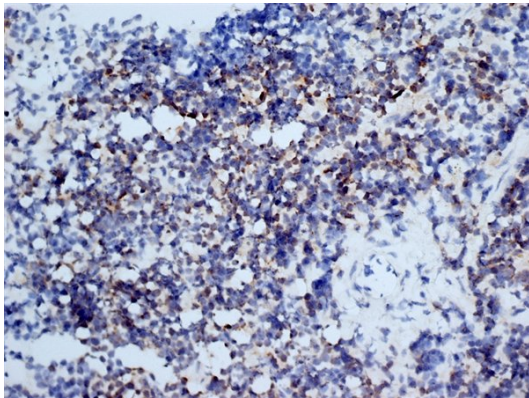
ARG23049 anti-CD3 antibody [KT3] IHC-Fr image

Immunohistochemistry: Mouse lymph node cryosection stained with ARG23049 anti-CD3 antibody [KT3] followed by HRP-conjugated Goat anti Rat IgG as a detection reagent. (High power).



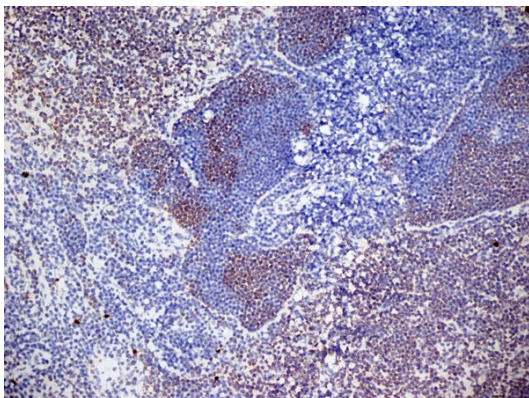
ARG23049 anti-CD3 antibody [KT3] IHC-Fr image

Immunohistochemistry: Mouse spleen cryosection stained with ARG23049 anti-CD3 antibody [KT3] followed by HRP-conjugated Goat anti Rat IgG as a detection reagent. (Low power).



ARG23049 anti-CD3 antibody [KT3] IHC-Fr image

Immunohistochemistry: Mouse spleen cryosection stained with ARG23049 anti-CD3 antibody [KT3] followed by HRP-conjugated Goat anti Rat IgG as a detection reagent. (Medium power).



ARG23049 anti-CD3 antibody [KT3] IHC-Fr image

Immunohistochemistry: Mouse lymph node cryosection stained with ARG23049 anti-CD3 antibody [KT3] followed by HRP-conjugated Goat anti Rat IgG as a detection reagent. (Low power).