

ARG23053
anti-CD18 / LFA1 beta antibody [YFC118.3] (FITC)

Package: 50 tests

Store at: 4°C

Summary

Product Description	FITC-conjugated Rat Monoclonal antibody [YFC118.3] recognizes CD18 / LFA1 beta
Tested Reactivity	Hu, Dog, Gpig
Tested Application	FACS
Host	Rat
Clonality	Monoclonal
Clone	YFC118.3
Isotype	IgG2b
Target Name	CD18 / LFA1 beta
Species	Human
Immunogen	Human neutrophils.
Conjugation	FITC
Alternate Names	MF17; LAD; CD antigen CD18; MFI7; MAC-1; Cell surface adhesion glycoproteins LFA-1/CR3/p150,95 subunit beta; LCAMB; Integrin beta-2; Complement receptor C3 subunit beta; LFA-1; CD18

Application Instructions

Application table	Application	Dilution
	FACS	Neat

Application Note FACS: Use 10 µl of the suggested working dilution to label 10⁶ cells in 100 µl.
* The dilutions indicate recommended starting dilutions and the optimal dilutions or concentrations should be determined by the scientist.

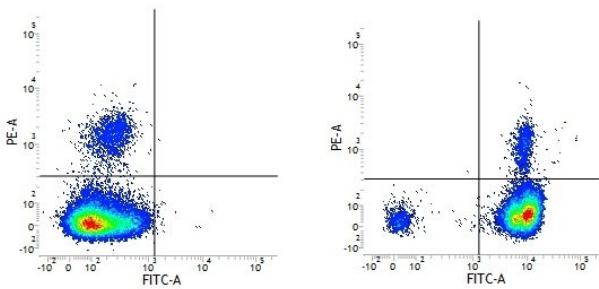
Properties

Form	Liquid
Purification	Purification with Protein G.
Buffer	PBS, 0.09% Sodium azide and 1% BSA
Preservative	0.09% Sodium azide
Stabilizer	1% BSA
Concentration	0.1 mg/ml
Storage instruction	Aliquot and store in the dark at 2-8°C. Keep protected from prolonged exposure to light. Avoid repeated freeze/thaw cycles. Suggest spin the vial prior to opening. The antibody solution should be gently mixed before use.
Note	For laboratory research only, not for drug, diagnostic or other use.

Bioinformatics

Gene Symbol	ITGB2
Gene Full Name	integrin, beta 2 (complement component 3 receptor 3 and 4 subunit)
Background	This gene encodes an integrin beta chain, which combines with multiple different alpha chains to form different integrin heterodimers. Integrins are integral cell-surface proteins that participate in cell adhesion as well as cell-surface mediated signalling. The encoded protein plays an important role in immune response and defects in this gene cause leukocyte adhesion deficiency. Alternative splicing results in multiple transcript variants. [provided by RefSeq, Dec 2014]
Function	Integrin alpha-L/beta-2 is a receptor for ICAM1, ICAM2, ICAM3 and ICAM4. Integrins alpha-M/beta-2 and alpha-X/beta-2 are receptors for the iC3b fragment of the third complement component and for fibrinogen. Integrin alpha-X/beta-2 recognizes the sequence G-P-R in fibrinogen alpha-chain. Integrin alpha-M/beta-2 recognizes P1 and P2 peptides of fibrinogen gamma chain. Integrin alpha-M/beta-2 is also a receptor for factor X. Integrin alpha-D/beta-2 is a receptor for ICAM3 and VCAM1. Triggers neutrophil transmigration during lung injury through PTK2B/PYK2-mediated activation. [UniProt]
Calculated Mw	85 kDa
PTM	Both Ser-745 and Ser-756 become phosphorylated when T-cells are exposed to phorbol esters (PubMed:11700305). Phosphorylation on Thr-758 (but not on Ser-756) allows interaction with 14-3-3 proteins (PubMed:11700305, PubMed:16301335).

Images



ARG23053 anti-CD18 / LFA1 beta antibody [YFC118.3] (FITC) FACS image

Flow Cytometry: Figure A. RPE conjugated Mouse anti Human CD19 and FITC conjugated Rat IgG2b isotype control. Figure B. RPE conjugated Mouse anti Human CD19 and ARG23053 anti-CD18 / LFA1 beta antibody [YFC118.3] (FITC). All experiments performed on Human peripheral blood lymphocytes.