

ARG23092 anti-TLN1 / Talin 1 antibody [TA205]

Package: 100 µg
Store at: -20°C

Summary

Product Description	Mouse Monoclonal antibody [TA205] recognizes TLN1 / Talin 1 Mouse anti Human Talin antibody, clone TA205 recognizes human talin, a ~225 kDa cytoskeletal protein. Mouse anti Human Talin antibody, clone TA205 may be used to stain adhesion plaques in fixed and permeabilized fibroblasts. Mouse anti Human Talin antibody, clone recognizes an epitope between residues 139 and 433.
Tested Reactivity	Hu, Chk, Rb
Tested Application	FACS, ICC/IF, IHC-Fr, IP, WB
Host	Mouse
Clonality	Monoclonal
Clone	TA205
Isotype	IgG1
Target Name	TLN1 / Talin 1
Species	Human
Immunogen	Human platelet talin.
Conjugation	Un-conjugated
Alternate Names	Talin-1; TLN; ILWEQ

Application Instructions

Application table	Application	Dilution
	FACS	1:25 - 1:100
	ICC/IF	Assay-dependent
	IHC-Fr	Assay-dependent
	IP	Assay-dependent
	WB	Assay-dependent
Application Note	FACS: Membrane permeabilization is required for this application. Use 10 µl of the suggested working dilution to label 10 ⁶ cells. * The dilutions indicate recommended starting dilutions and the optimal dilutions or concentrations should be determined by the scientist.	

Properties

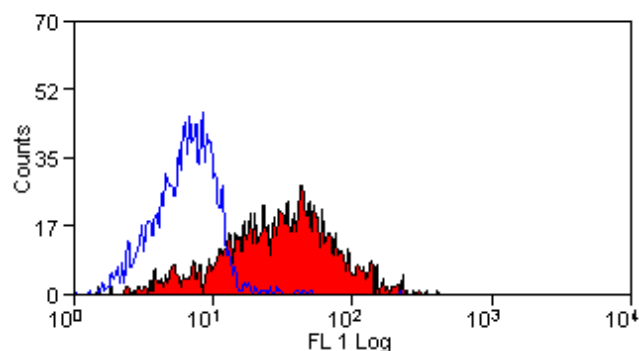
Form	Liquid
Purification	Purification with Protein G.
Buffer	PBS and 0.09% Sodium azide

Preservative	0.09% Sodium azide
Concentration	1 mg/ml
Storage instruction	For continuous use, store undiluted antibody at 2-8°C for up to a week. For long-term storage, aliquot and store at -20°C or below. Storage in frost free freezers is not recommended. Avoid repeated freeze/thaw cycles. Suggest spin the vial prior to opening. The antibody solution should be gently mixed before use.
Note	For laboratory research only, not for drug, diagnostic or other use.

Bioinformation

Gene Symbol	TLN1
Gene Full Name	talin 1
Background	This gene encodes a cytoskeletal protein that is concentrated in areas of cell-substratum and cell-cell contacts. The encoded protein plays a significant role in the assembly of actin filaments and in spreading and migration of various cell types, including fibroblasts and osteoclasts. It codistributes with integrins in the cell surface membrane in order to assist in the attachment of adherent cells to extracellular matrices and of lymphocytes to other cells. The N-terminus of this protein contains elements for localization to cell-extracellular matrix junctions. The C-terminus contains binding sites for proteins such as beta-1-integrin, actin, and vinculin. [provided by RefSeq, Feb 2009]
Function	Probably involved in connections of major cytoskeletal structures to the plasma membrane. High molecular weight cytoskeletal protein concentrated at regions of cell-substratum contact and, in lymphocytes, at cell-cell contacts (By similarity). [UniProt]
Calculated Mw	270 kDa

Images



ARG23092 anti-TLN1 / Talin 1 antibody [TA205] FACS image

Flow Cytometry: Human peripheral blood platelets stained with ARG23092 anti-TLN1 / Talin 1 antibody [TA205].