

ARG23102 anti-CD62P / P-Selectin antibody [AK-6]

Package: 100 µg

Store at: -20°C

Summary

Product Description	Mouse Monoclonal antibody [AK-6] recognizes CD62P / P-Selectin Mouse anti Human CD62P antibody, clone AK-6 recognizes the CD62P glycoprotein, a 140kD molecule expressed by activated platelets and endothelial cells. CD62P is also known as P-selectin, PADGEM or GMP140 and plays an important role in adhesive processes between leucocytes and endothelial cells. CD62P is a component of the alpha granule and is translocated to the plasma membrane upon activation.
Tested Reactivity	Hu, R. Mk
Tested Application	FACS, ICC/IF, IHC-Fr, IHC-P, WB
Host	Mouse
Clonality	Monoclonal
Clone	AK-6
Isotype	IgG1
Target Name	CD62P / P-Selectin
Species	Human
Immunogen	Human platelet membrane glycoproteins.
Conjugation	Un-conjugated
Alternate Names	PADGEM; CD62; Platelet activation dependent granule-external membrane protein; CD62 antigen-like family member P; GMP140; PSEL; Granule membrane protein 140; CD62P; CD antigen CD62P; Leukocyte-endothelial cell adhesion molecule 3; GRMP; GMP-140; P-selectin; LECAM3

Application Instructions

Application table	Application	Dilution
	FACS	1:10 - 1:100
	ICC/IF	Assay-dependent
	IHC-Fr	1:1000 - 1:5000
	IHC-P	1:500 - 1:2000
	WB	Assay-dependent
Application Note	IHC-P: Staining may be enhanced using Sodium Citrate buffer pH 6.0 FACS: Use 10 µl of the suggested working dilution to label 10 ⁶ cells in 100 µl. * The dilutions indicate recommended starting dilutions and the optimal dilutions or concentrations should be determined by the scientist.	

Properties

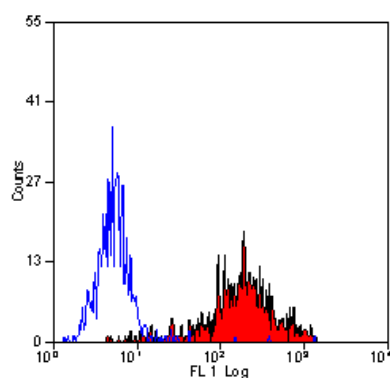
Form	Liquid
------	--------

Purification	Purification with Protein G.
Buffer	PBS and 0.09% Sodium azide
Preservative	0.09% Sodium azide
Concentration	1 mg/ml
Storage instruction	For continuous use, store undiluted antibody at 2-8°C for up to a week. For long-term storage, aliquot and store at -20°C or below. Storage in frost free freezers is not recommended. Avoid repeated freeze/thaw cycles. Suggest spin the vial prior to opening. The antibody solution should be gently mixed before use.
Note	For laboratory research only, not for drug, diagnostic or other use.

Bioinformation

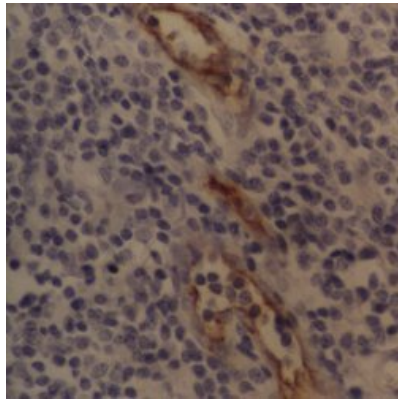
Gene Symbol	SELP
Gene Full Name	selectin P (granule membrane protein 140kDa, antigen CD62)
Background	This gene encodes a 140 kDa protein that is stored in the alpha-granules of platelets and Weibel-Palade bodies of endothelial cells. This protein redistributes to the plasma membrane during platelet activation and degranulation and mediates the interaction of activated endothelial cells or platelets with leukocytes. The membrane protein is a calcium-dependent receptor that binds to sialylated forms of Lewis blood group carbohydrate antigens on neutrophils and monocytes. Alternative splice variants may occur but are not well documented. [provided by RefSeq, Jul 2008]
Function	Ca(2+)-dependent receptor for myeloid cells that binds to carbohydrates on neutrophils and monocytes. Mediates the interaction of activated endothelial cells or platelets with leukocytes. The ligand recognized is sialyl-Lewis X. Mediates rapid rolling of leukocyte rolling over vascular surfaces during the initial steps in inflammation through interaction with PSGL1. [UniProt]
Calculated Mw	91 kDa

Images



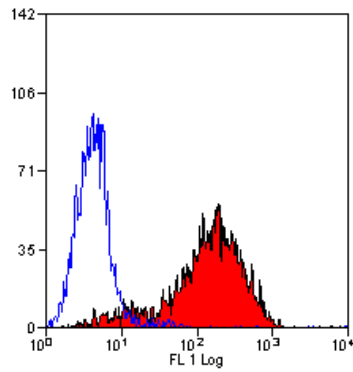
ARG23102 anti-CD62P / P-Selectin antibody [AK-6] FACS image

Flow Cytometry: Human peripheral blood platelets stained with ARG23102 anti-CD62P / P-Selectin antibody [AK-6].



ARG23102 anti-CD62P / P-Selectin antibody [AK-6] IHC-P image

Immunohistochemistry: Formalin-fixed and paraffin-embedded Human tonsil stained with ARG23102 anti-CD62P / P-Selectin antibody [AK-6].



ARG23102 anti-CD62P / P-Selectin antibody [AK-6] FACS image

Flow Cytometry: Thrombin activated platelets stained with ARG23102 anti-CD62P / P-Selectin antibody [AK-6].