

ARG23284 anti-TLN1 / Talin 1 antibody [97H6]

Package: 100 µg
Store at: -20°C

Summary

Product Description	Mouse Monoclonal antibody [97H6] recognizes TLN1 / Talin 1 Mouse anti Human Talin-1 antibody, clone 97H6 recognizes an epitope within the region of amino acids 482-655 of human Talin-1, a high molecular weight cytoskeletal protein, linking vinculin to the integrins, thereby linking the cytoskeleton to the extracellular matrix. It is specifically found in regions of cell-substratum contact and in lymphocytes at cell-cell contact points. Talin-1 plays a role in the assembly of actin filaments and in the migration of cells such as osteoclasts and fibroblasts.
Tested Reactivity	Hu, Ms, Rb
Tested Application	ICC/IF, IHC-P, IP, WB
Host	Mouse
Clonality	Monoclonal
Clone	97H6
Isotype	IgG1
Target Name	TLN1 / Talin 1
Species	Human
Immunogen	His-tagged polypeptide containing aa. 489-911 of Mouse Talin 1.
Conjugation	Un-conjugated
Alternate Names	Talin-1; TLN; ILWEQ

Application Instructions

Application table	Application	Dilution
	ICC/IF	Assay-dependent
	IHC-P	1:25 - 1:100
	IP	Assay-dependent
	WB	Assay-dependent
Application Note	ICC/IF: Methanol treatment is required prior to antibody staining. IHC-P: Antigen Retrieval: Boil tissue section in Sodium citrate buffer (pH 6.0). * The dilutions indicate recommended starting dilutions and the optimal dilutions or concentrations should be determined by the scientist.	

Properties

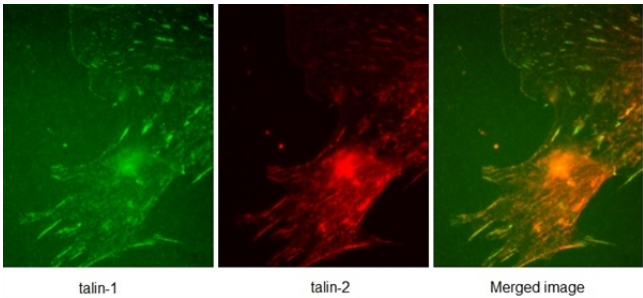
Form	Liquid
Purification	Purification with Protein G.
Buffer	PBS and 0.09% Sodium azide.
Preservative	0.09% Sodium azide

Concentration	1 mg/ml
Storage instruction	For continuous use, store undiluted antibody at 2-8°C for up to a week. For long-term storage, aliquot and store at -20°C or below. Storage in frost free freezers is not recommended. Avoid repeated freeze/thaw cycles. Suggest spin the vial prior to opening. The antibody solution should be gently mixed before use.
Note	For laboratory research only, not for drug, diagnostic or other use.

Bioinformation

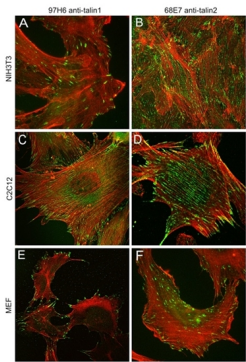
Gene Symbol	TLN1
Gene Full Name	talin 1
Background	This gene encodes a cytoskeletal protein that is concentrated in areas of cell-substratum and cell-cell contacts. The encoded protein plays a significant role in the assembly of actin filaments and in spreading and migration of various cell types, including fibroblasts and osteoclasts. It codistributes with integrins in the cell surface membrane in order to assist in the attachment of adherent cells to extracellular matrices and of lymphocytes to other cells. The N-terminus of this protein contains elements for localization to cell-extracellular matrix junctions. The C-terminus contains binding sites for proteins such as beta-1-integrin, actin, and vinculin. [provided by RefSeq, Feb 2009]
Function	Probably involved in connections of major cytoskeletal structures to the plasma membrane. High molecular weight cytoskeletal protein concentrated at regions of cell-substratum contact and, in lymphocytes, at cell-cell contacts (By similarity). [UniProt]
Calculated Mw	270 kDa

Images



ARG23284 anti-TLN1 / Talin 1 antibody [97H6] ICC/IF image

Immunofluorescence: Murine embryonic fibroblast stained with ARG23284 anti-TLN1 / Talin 1 antibody [97H6] and anti talin-2 antibody [68E7] by immunofluorescence demonstrating partial overlapping expression.



ARG23284 anti-TLN1 / Talin 1 antibody [97H6] ICC/IF image

Immunofluorescence: Three cells types: Mouse NIH3T3, undifferentiated C2C12 cells and Mouse embryo fibroblasts were fixed and stained for either talin1 using ARG23284 anti-TLN1 / Talin 1 antibody [97H6] (left column) or talin2 using anti Talin-2 antibody [68E7] (right column), both in green and actin in red. Cells were fixed and permeabilised using methanol.