

ARG23318 anti-IL6R alpha antibody [B-R6] (low endotoxin)

Package: 100 µl

Store at: -20°C

Summary

Product Description	Azide free and low endotoxin Mouse Monoclonal antibody [B-R6] recognizes IL6R alpha
Tested Reactivity	Hu
Tested Application	ELISA, FACS, FuncSt, IHC-Fr, IP
Specificity	This antibody recognizes the Interleukin-6 Ra subunit, IL-6 Ra, IL-6 R, a 80 kDa protein.
Host	Mouse
Clonality	Monoclonal
Clone	B-R6
Isotype	IgG1
Target Name	IL6R alpha
Species	Human
Immunogen	IL6R alpha transfected CHO cell line
Conjugation	Un-conjugated
Alternate Names	IL-6R-alpha; CD126; IL6RA; IL-6 receptor subunit alpha; IL-6R subunit alpha; IL6Q; CD antigen CD126; IL-6R 1; IL-6RA; gp80; IL6RQ; Interleukin-6 receptor subunit alpha; IL-6R-1; Membrane glycoprotein 80

Application Instructions

Application table	Application	Dilution
	ELISA	Assay-dependent
	FACS	Assay-dependent
	FuncSt	Assay-dependent
	IHC-Fr	Assay-dependent
	IP	Assay-dependent

Application Note * The dilutions indicate recommended starting dilutions and the optimal dilutions or concentrations should be determined by the scientist.

Properties

Form	Liquid
Purification Note	Sterile-filtered through 0.22 µm and treated to remove endotoxins.
Buffer	PBS
Storage instruction	For continuous use, store undiluted antibody at 2-8°C for up to a week. For long-term storage, aliquot and store at -20°C or below. Storage in frost free freezers is not recommended. Avoid repeated freeze/thaw cycles. Suggest spin the vial prior to opening. The antibody solution should be gently mixed before use.

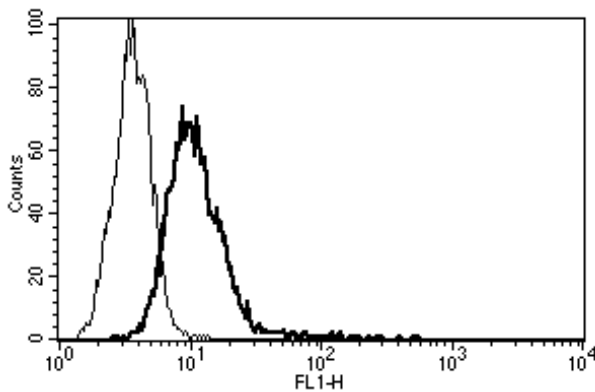
Note

For laboratory research only, not for drug, diagnostic or other use.

Bioinformation

Gene Symbol	IL6R
Gene Full Name	interleukin 6 receptor
Background	This gene encodes a subunit of the interleukin 6 (IL6) receptor complex. Interleukin 6 is a potent pleiotropic cytokine that regulates cell growth and differentiation and plays an important role in the immune response. The IL6 receptor is a protein complex consisting of this protein and interleukin 6 signal transducer (IL6ST/GP130/IL6-beta), a receptor subunit also shared by many other cytokines. Dysregulated production of IL6 and this receptor are implicated in the pathogenesis of many diseases, such as multiple myeloma, autoimmune diseases and prostate cancer. Alternatively spliced transcript variants encoding distinct isoforms have been reported. A pseudogene of this gene is found on chromosome 9.[provided by RefSeq, May 2011]
Function	Part of the receptor for interleukin 6. Binds to IL6 with low affinity, but does not transduce a signal. Signal activation necessitate an association with IL6ST. Activation may lead to the regulation of the immune response, acute-phase reactions and hematopoiesis. Low concentration of a soluble form of IL6 receptor acts as an agonist of IL6 activity. [UniProt]
Calculated Mw	52 kDa
PTM	A short soluble form may also be released from the membrane by proteolysis. [UniProt]

Images



ARG23318 anti-IL6R alpha antibody [B-R6] (low endotoxin) FACS image

Flow Cytometry: U266 cell line stained with ARG23318 anti-IL6R alpha antibody [B-R6] (low endotoxin).