

ARG23374 anti-CD11b antibody [CC126] (FITC)

Package: 50 µg
Store at: 4°C

Summary

Product Description	FITC-conjugated Mouse Monoclonal antibody [CC126] recognizes CD11b Mouse anti Bovine CD11b antibody, clone CC126 recognizes the bovine CD11b cell surface antigen.
Tested Reactivity	Bov, Goat, Sheep
Tested Application	FACS
Host	Mouse
Clonality	Monoclonal
Clone	CC126
Isotype	IgG2b
Target Name	CD11b
Species	Bovine
Conjugation	FITC
Alternate Names	MAC1A; CR3A; CR-3 alpha chain; Cell surface glycoprotein MAC-1 subunit alpha; Integrin alpha-M; MAC-1; CD11 antigen-like family member B; Leukocyte adhesion receptor MO1; MO1A; SLEB6; Neutrophil adherence receptor; CD antigen CD11b; CD11B

Application Instructions

Application table	<table><thead><tr><th>Application</th><th>Dilution</th></tr></thead><tbody><tr><td>FACS</td><td>1:25 - 1:200</td></tr></tbody></table>	Application	Dilution	FACS	1:25 - 1:200
Application	Dilution				
FACS	1:25 - 1:200				
Application Note	FACS: Use 10 µl of the suggested working dilution to label 10 ⁶ cells in 100 µl. * The dilutions indicate recommended starting dilutions and the optimal dilutions or concentrations should be determined by the scientist.				

Properties

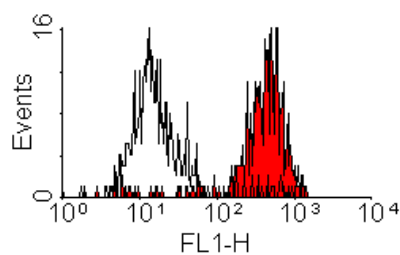
Form	Liquid
Purification	Purification with Protein G.
Buffer	PBS, 0.09% Sodium azide and 1% BSA.
Preservative	0.09% Sodium azide
Stabilizer	1% BSA
Concentration	0.1 mg/ml
Storage instruction	Aliquot and store in the dark at 2-8°C. Keep protected from prolonged exposure to light. Avoid repeated freeze/thaw cycles. Suggest spin the vial prior to opening. The antibody solution should be gently mixed before use.
Note	For laboratory research only, not for drug, diagnostic or other use.

Bioinformation

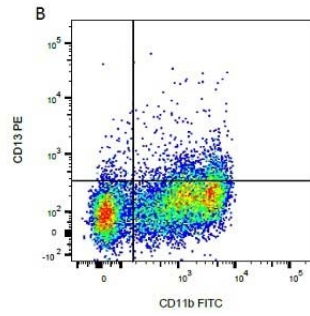
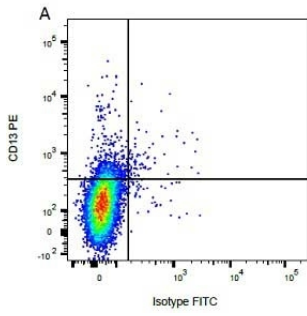
Gene Symbol	ITGAM
Gene Full Name	integrin, alpha M (complement component 3 receptor 3 subunit)
Background	CD11b (integrin alpha M chain): Integrins are heterodimeric integral membrane proteins composed of an alpha chain and a beta chain. This I-domain containing alpha integrin combines with the beta 2 chain (ITGB2) to form a leukocyte-specific integrin referred to as macrophage receptor 1 ('Mac-1'), or inactivated-C3b (iC3b) receptor 3 ('CR3'). The alpha M beta 2 integrin is important in the adherence of neutrophils and monocytes to stimulated endothelium, and also in the phagocytosis of complement coated particles. Multiple transcript variants encoding different isoforms have been found for this gene. [provided by RefSeq, Mar 2009]
Function	CD11b: Integrin ITGAM/ITGB2 is implicated in various adhesive interactions of monocytes, macrophages and granulocytes as well as in mediating the uptake of complement-coated particles and pathogens (PubMed:9558116, PubMed:20008295). It is identical with CR-3, the receptor for the iC3b fragment of the third complement component. It probably recognizes the R-G-D peptide in C3b. Integrin ITGAM/ITGB2 is also a receptor for fibrinogen, factor X and ICAM1. It recognizes P1 and P2 peptides of fibrinogen gamma chain. Regulates neutrophil migration (PubMed:28807980). In association with beta subunit ITGB2/CD18, required for CD177-PRTN3-mediated activation of TNF primed neutrophils (PubMed:21193407). May regulate phagocytosis-induced apoptosis in extravasated neutrophils. May play a role in mast cell development. Required with TYROBP/DAP12 in microglia to control production of microglial superoxide ions which promote the neuronal apoptosis that occurs during brain development. [UniProt]
Highlight	Related products: CD11b antibodies ; CD11b Duos / Panels ; Anti-Mouse IgG secondary antibodies ; Related news: New antibody panels and duos for Tumor immune microenvironment Anti-SerpinB9 therapy, a new strategy for cancer therapy
Research Area	MDSC Marker antibody; Myeloid-derived suppressor cell antibody
Calculated Mw	127 kDa

Images

ARG23374 anti-CD11b antibody [CC126] (FITC) FACS image

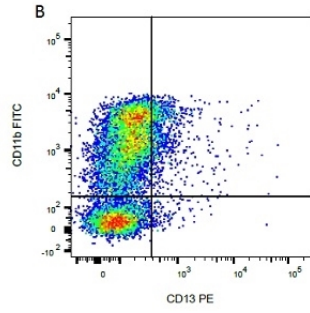
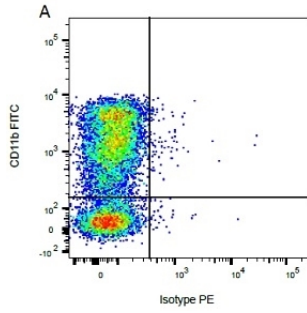


Flow Cytometry: Bovine peripheral blood monocytes stained with ARG23374 anti-CD11b antibody [CC126] (FITC).



ARG23374 anti-CD11b antibody [CC126] (FITC) FACS image

Flow Cytometry: Figure A. Purified Mouse anti Bovine CD13 detected with Goat anti Mouse IgG1 RPE and FITC conjugated Mouse IgG2b isotype control. Figure B. Purified Mouse anti Bovine CD13 detected with Goat anti Mouse IgG1 RPE and ARG23374 anti-CD11b antibody [CC126] (FITC). All experiments performed on red cell lysed Bovine blood gated on mononuclear cells.



ARG23374 anti-CD11b antibody [CC126] (FITC) FACS image

Flow Cytometry: Figure A. ARG23374 anti-CD11b antibody [CC126] (FITC) and purified Mouse IgG1 isotype control detected with RPE conjugated Goat anti Mouse IgG1. Figure B. ARG23374 anti-CD11b antibody [CC126] (FITC) and purified CD13 detected with RPE conjugated Goat anti Mouse IgG1. All experiments performed on red cell lysed Bovine blood gated on mononuclear cells.