

**ARG23441**  
**anti-CD226 antibody [DX11] (PE)**

Package: 50 tests

Store at: 4°C

### Summary

Product Description	PE-conjugated Mouse Monoclonal antibody [DX11] recognizes CD226 Mouse anti Human CD226 antibody, clone DX11 recognizes human CD226, a ~65 kDa glycoprotein, also known as DNAM1 (DNAX accessory molecule-1). CD226 is broadly expressed on T-cells, NK cells, platelets, monocytes and a subset of B cells. CD226 is also expressed by a subset of CD3 positive thymocytes. Mouse anti Human CD226 antibody, clone DX11 is reported to inhibit T- and NK cell mediated cytotoxicity against tumor cell targets and to block TNF alpha and IFN gamma secretion by alloantigen-specific T-cells (Kojima et al. 2003).
Tested Reactivity	Hu
Tested Application	FACS
Host	Mouse
Clonality	Monoclonal
Clone	DX11
Isotype	IgG1
Target Name	CD226
Species	Human
Immunogen	Human cytotoxic T lymphocyte clone.
Conjugation	PE
Alternate Names	TLISA1; CD antigen CD226; PTA1; CD226 antigen; DNAM-1; DNAX accessory molecule 1; DNAM1

### Application Instructions

Application table	Application	Dilution
	FACS	1:50 - 1:200

**Application Note** FACS: Use 10 µl of the suggested working dilution to label 10<sup>6</sup> cells in 100 µl.  
\* The dilutions indicate recommended starting dilutions and the optimal dilutions or concentrations should be determined by the scientist.

### Properties

Form	Liquid
Purification	Purification with Protein A.
Buffer	PBS, 0.09% Sodium azide, 1% BSA and 5% Sucrose.
Preservative	0.09% Sodium azide
Stabilizer	1% BSA and 5% Sucrose
Storage instruction	Aliquot and store in the dark at 2-8°C. Keep protected from prolonged exposure to light. Avoid repeated freeze/thaw cycles. Suggest spin the vial prior to opening. The antibody solution should be gently mixed before use.

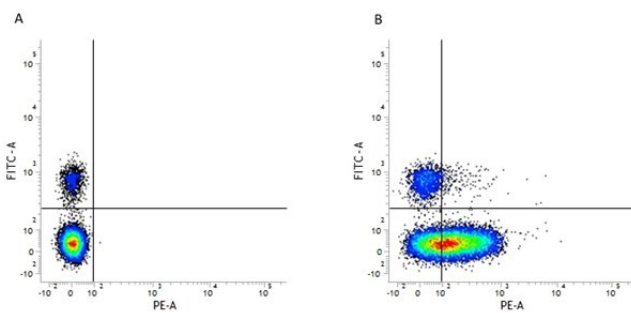
Note

For laboratory research only, not for drug, diagnostic or other use.

## Bioinformation

Gene Symbol	CD226
Gene Full Name	CD226 molecule
Background	This gene encodes a glycoprotein expressed on the surface of NK cells, platelets, monocytes and a subset of T cells. It is a member of the Ig-superfamily containing 2 Ig-like domains of the V-set. The protein mediates cellular adhesion of platelets and megakaryocytic cells to vascular endothelial cells. The protein also plays a role in megakaryocytic cell maturation. Alternative splicing results in multiple transcript variants. [provided by RefSeq, Jan 2015]
Function	Receptor involved in intercellular adhesion, lymphocyte signaling, cytotoxicity and lymphokine secretion mediated by cytotoxic T-lymphocyte (CTL) and NK cell. [UniProt]
Research Area	Immune System antibody; T Cell Intercellular Adhesion Molecule antibody
Calculated Mw	39 kDa

## Images



ARG23441 anti-CD226 antibody [DX11] (PE) FACS image

Flow Cytometry: Figure A. FITC conjugated Mouse anti Human CD19 and PE-conjugated Mouse IgG1 isotype control. Figure B. FITC conjugated Mouse anti Human CD19 and ARG23441 anti-CD226 antibody [DX11] (PE). All experiments performed on red cell lysed Human peripheral blood gated on lymphocytes.