

## ARG23476 anti-CD21 antibody [CC51]

Package: 50 µg  
Store at: -20°C

### Summary

Product Description	Mouse Monoclonal antibody [CC51] recognizes CD21 Mouse anti Bovine CD21 monoclonal antibody, clone CC51 recognizes the bovine homologue of the human CD21 cell surface antigen, a 145 kDa single pass type I membrane glycoprotein containing multiple sushi domains. CD21 is also known as complement receptor type 2 (CR2). In cattle CD21 expression is restricted to B-cells (Naessens et al. 1990). CD21 may be expressed on B-cells as either a long or a short form (Pringle et al. 2012). Mouse anti Bovine CD21, clone CC51 demonstrates cross reactivity with porcine and provides a reliable marker for porcine B-Cells (Sinkora et. al. 2013).
Tested Reactivity	Bov, Pig
Tested Application	FACS
Host	Mouse
Clonality	Monoclonal
Clone	CC51
Isotype	IgG2b
Target Name	CD21
Species	Bovine
Immunogen	Bovine (Friesian cattle) mesenteric lymph node cells
Conjugation	Un-conjugated
Alternate Names	Cr2; Complement C3d receptor; C3DR; CD21; CD antigen CD21; Complement receptor type 2; SLEB9; CR; CVID7; Epstein-Barr virus receptor; EBV receptor

### Application Instructions

Application table	<table> <tr> <th>Application</th><th>Dilution</th></tr> <tr> <td>FACS</td><td>Neat - 1:10</td></tr> </table>	Application	Dilution	FACS	Neat - 1:10
Application	Dilution				
FACS	Neat - 1:10				
Application Note	FACS: Use 10 µl of the suggested working dilution to label 10 <sup>6</sup> cells in 100 µl * The dilutions indicate recommended starting dilutions and the optimal dilutions or concentrations should be determined by the scientist.				

### Properties

Form	Liquid
Purification	Purification with Protein A.
Buffer	PBS and 0.09% Sodium azide.
Preservative	0.09% Sodium azide
Concentration	1 mg/ml
Storage instruction	For continuous use, store undiluted antibody at 2-8°C for up to a week. For long-term storage, aliquot and store at -20°C or below. Storage in frost free freezers is not recommended. Avoid repeated

freeze/thaw cycles. Suggest spin the vial prior to opening. The antibody solution should be gently mixed before use.

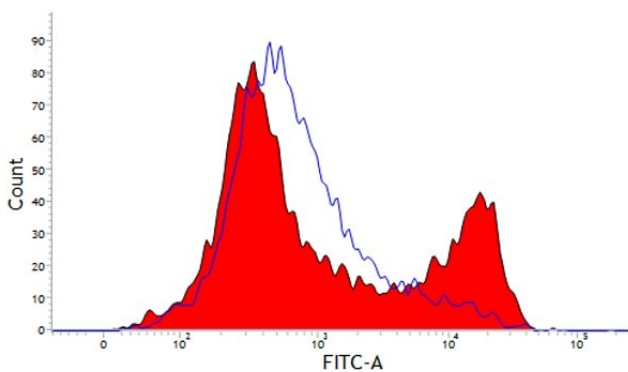
#### Note

For laboratory research only, not for drug, diagnostic or other use.

## Bioinformation

Gene Symbol	CR2
Gene Full Name	complement component (3d/Epstein Barr virus) receptor 2
Background	This gene encodes a membrane protein, which functions as a receptor for Epstein-Barr virus (EBV) binding on B and T lymphocytes. Genetic variations in this gene are associated with susceptibility to systemic lupus erythematosus type 9 (SLEB9). Alternatively spliced transcript variants encoding different isoforms have been found for this gene.[provided by RefSeq, Sep 2009]
Function	Receptor for complement C3Dd, for the Epstein-Barr virus on human B-cells and T-cells and for HNRPU. Participates in B lymphocytes activation. [UniProt]
Calculated Mw	113 kDa

## Images



ARG23476 anti-CD21 antibody [CC51] FACS image

Flow Cytometry: Bovine peripheral blood lymphocytes stained with ARG23476 anti-CD21 antibody [CC51] followed by Goat anti Mouse IgG (FITC).