

ARG23526
anti-CD105 / Endoglin antibody [SN6] (PE)

Package: 50 tests

Store at: 4°C

Summary

Product Description	PE-conjugated Mouse Monoclonal antibody [SN6] recognizes CD105 / Endoglin. Mouse anti Human CD105 antibody, clone SN6 recognizes the human endoglin, also known as CD105. CD105 is a glycoprotein homodimer of 95 kDa subunits expressed by endothelial cells, activated monocytes and some leukemia cells.
Tested Reactivity	Hu, Hrs, R. Mk
Tested Application	FACS
Host	Mouse
Clonality	Monoclonal
Clone	SN6
Isotype	IgG1
Target Name	CD105 / Endoglin
Species	Human
Immunogen	Partially purified cell membrane antigens from fresh leukemia cells.
Conjugation	PE
Alternate Names	CD antigen CD105; HHT1; Endoglin; ORW1; END

Application Instructions

Application table	Application	Dilution
	FACS	Neat

Application Note FACS: Use 10 µl of the suggested working dilution to label 10⁶ cells in 100 µl.
* The dilutions indicate recommended starting dilutions and the optimal dilutions or concentrations should be determined by the scientist.

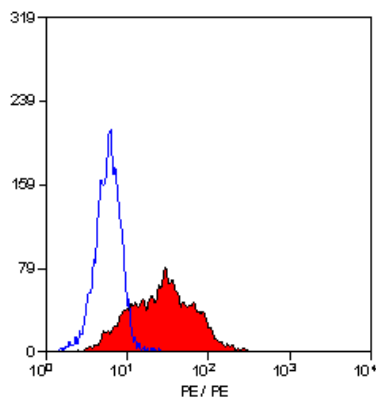
Properties

Form	Liquid
Purification	Purification with Protein G.
Buffer	PBS, 0.09% Sodium azide, 1% BSA and 5% Sucrose.
Preservative	0.09% Sodium azide
Stabilizer	1% BSA and 5% Sucrose
Storage instruction	Aliquot and store in the dark at 2-8°C. Keep protected from prolonged exposure to light. Avoid repeated freeze/thaw cycles. Suggest spin the vial prior to opening. The antibody solution should be gently mixed before use.
Note	For laboratory research only, not for drug, diagnostic or other use.

Bioinformation

Gene Symbol	ENG
Gene Full Name	endoglin
Background	This gene encodes a homodimeric transmembrane protein which is a major glycoprotein of the vascular endothelium. This protein is a component of the transforming growth factor beta receptor complex and it binds to the beta1 and beta3 peptides with high affinity. Mutations in this gene cause hereditary hemorrhagic telangiectasia, also known as Osler-Rendu-Weber syndrome 1, an autosomal dominant multisystemic vascular dysplasia. This gene may also be involved in preeclampsia and several types of cancer. Alternatively spliced transcript variants encoding different isoforms have been found for this gene. [provided by RefSeq, May 2013]
Function	Major glycoprotein of vascular endothelium. Involved in the regulation of angiogenesis. May play a critical role in the binding of endothelial cells to integrins and/or other RGD receptors. Acts as TGF-beta coreceptor and is involved in the TGF-beta/BMP signaling cascade. Required for GDF2/BMP9 signaling through SMAD1 in endothelial cells and modulates TGF-beta1 signaling through SMAD3. [UniProt]
Calculated Mw	71 kDa

Images



ARG23526 anti-CD105 / Endoglin antibody [SN6] (PE) FACS image

Flow Cytometry: KG1 cells stained with ARG23526 anti-CD105 / Endoglin antibody [SN6] (PE).