

**ARG23558**  
**anti-CD106 / VCAM1 antibody [MR106] (FITC)**Package: 50 µg  
Store at: 4°C

## Summary

Product Description	FITC-conjugated Mouse Monoclonal antibody [MR106] recognizes CD106 / VCAM1. Mouse anti Rat CD106 antibody, clone MR106 specifically recognizes rat CD106, otherwise known as VCAM-1 (vascular adhesion molecule 1), a 110kDa inducible type I transmembrane glycoprotein and member of the immunoglobulin supergene family, which is predominantly expressed on vascular endothelium, and also on bone marrow stromal cells, follicular dendritic cells and some macrophages. CD106 interacts with the lymphocyte homing receptor VLA-4 (alpha4 beta1 integrin) and LPAM-1 (alpha4 beta7 integrin) and mediates leucocyte-endothelial cell adhesion and signal transduction. Expression of CD106 is upregulated following cytokine activation, and endothelial CD106 plays a role in the extravasation of leucocytes from blood vessels during inflammation.
Tested Reactivity	Rat
Tested Application	FACS
Host	Mouse
Clonality	Monoclonal
Clone	MR106
Isotype	IgG1
Target Name	CD106 / VCAM1
Species	Rat
Immunogen	Rat CD106-transfected L5178Y cells.
Conjugation	FITC
Alternate Names	CD106; INCAM-100; Vascular cell adhesion protein 1; VCAM-1; CD antigen CD106; V-CAM 1

## Application Instructions

Application table	<table><thead><tr><th>Application</th><th>Dilution</th></tr></thead><tbody><tr><td>FACS</td><td>Neat</td></tr></tbody></table>	Application	Dilution	FACS	Neat
Application	Dilution				
FACS	Neat				
Application Note	FACS: Use 10 µl of the suggested working dilution to label 10 <sup>6</sup> cells in 100 µl. * The dilutions indicate recommended starting dilutions and the optimal dilutions or concentrations should be determined by the scientist.				

## Properties

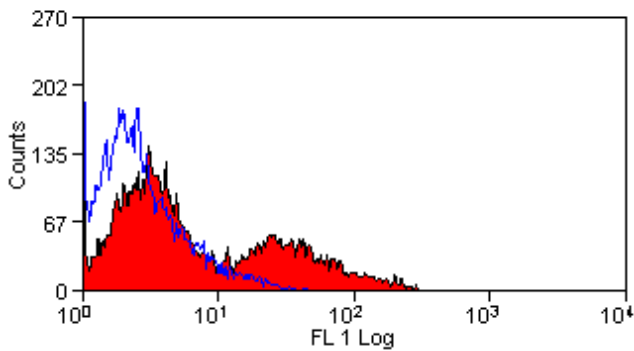
Form	Liquid
Purification	Purification with Protein G.
Buffer	PBS, 0.09% Sodium azide and 1% BSA.
Preservative	0.09% Sodium azide
Stabilizer	1% BSA

Concentration	0.1 mg/ml
Storage instruction	Aliquot and store in the dark at 2-8°C. Keep protected from prolonged exposure to light. Avoid repeated freeze/thaw cycles. Suggest spin the vial prior to opening. The antibody solution should be gently mixed before use.
Note	For laboratory research only, not for drug, diagnostic or other use.

## Bioinformation

Gene Symbol	VCAM1
Gene Full Name	vascular cell adhesion molecule 1
Background	This gene is a member of the Ig superfamily and encodes a cell surface sialoglycoprotein expressed by cytokine-activated endothelium. This type I membrane protein mediates leukocyte-endothelial cell adhesion and signal transduction, and may play a role in the development of atherosclerosis and rheumatoid arthritis. Three alternatively spliced transcripts encoding different isoforms have been described for this gene. [provided by RefSeq, Dec 2010]
Function	Important in cell-cell recognition. Appears to function in leukocyte-endothelial cell adhesion. Interacts with integrin alpha-4/beta-1 (ITGA4/ITGB1) on leukocytes, and mediates both adhesion and signal transduction. The VCAM1/ITGA4/ITGB1 interaction may play a pathophysiologic role both in immune responses and in leukocyte emigration to sites of inflammation. [UniProt]
Calculated Mw	81 kDa
PTM	Sialoglycoprotein. [UniProt]

## Images



ARG23558 anti-CD106 / VCAM1 antibody [MR106] (FITC) FACS image

Flow Cytometry: Rat bone marrow cells stained with ARG23558 anti-CD106 / VCAM1 antibody [MR106] (FITC).