

ARG23684 anti-Collagen VII antibody

Package: 50 µg
Store at: -20°C

Summary

| | |
|---------------------|--|
| Product Description | Rabbit Polyclonal antibody recognizes Collagen VII |
| Tested Reactivity | Hu, Marmoset |
| Tested Application | ELISA, FACS, ICC/IF, IHC-P, IP, WB |
| Specificity | The antibody reacts with collagen type VII from human and marmoset. It exhibits no cross reactivity. |
| Host | Rabbit |
| Clonality | Polyclonal |
| Isotype | IgG |
| Target Name | Collagen VII |
| Species | Human |
| Immunogen | Collagen type VII from Human placenta. |
| Conjugation | Un-conjugated |
| Alternate Names | EBD1; EBR1; EBDCT; NDNC8; Collagen alpha-1(VII) chain; Long-chain collagen; LC collagen |

Application Instructions

| Application table | Application | Dilution |
|-------------------|-------------|-----------------|
| | ELISA | Assay-dependent |
| | FACS | Assay-dependent |
| | ICC/IF | 2.5 - 10 µg/ml |
| | IHC-P | 5 - 20 µg/ml |
| | IP | 2.5 - 10 µg/ml |
| | WB | 200 - 800 ng/ml |

Application Note
IHC-P: Antigen Retrieval: Incubate tissue section with Proteinase K.
* The dilutions indicate recommended starting dilutions and the optimal dilutions or concentrations should be determined by the scientist.

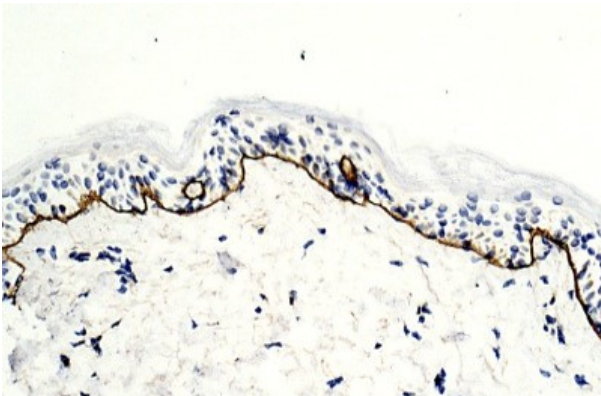
Properties

| | |
|---------------------|--|
| Form | Liquid |
| Purification | Purified by affinity chromatography. |
| Buffer | PBS |
| Storage instruction | For continuous use, store undiluted antibody at 2-8°C for up to a week. For long-term storage, aliquot and store at -20°C or below. Storage in frost free freezers is not recommended. Avoid repeated freeze/thaw cycles. Suggest spin the vial prior to opening. The antibody solution should be gently mixed before use. |

Bioinformation

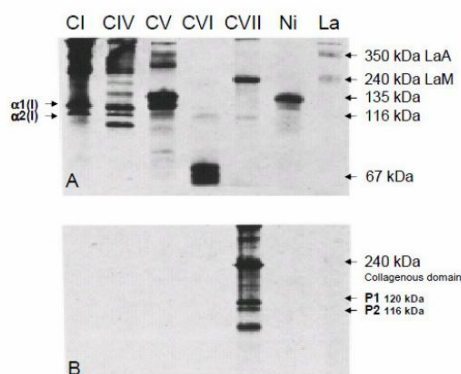
| | |
|----------------|--|
| Gene Symbol | COL7A1 |
| Gene Full Name | collagen, type VII, alpha 1 |
| Background | This gene encodes the alpha chain of type VII collagen. The type VII collagen fibril, composed of three identical alpha collagen chains, is restricted to the basement zone beneath stratified squamous epithelia. It functions as an anchoring fibril between the external epithelia and the underlying stroma. Mutations in this gene are associated with all forms of dystrophic epidermolysis bullosa. In the absence of mutations, however, an acquired form of this disease can result from an autoimmune response made to type VII collagen. [provided by RefSeq, Jul 2008] |
| Function | Stratified squamous epithelial basement membrane protein that forms anchoring fibrils which may contribute to epithelial basement membrane organization and adherence by interacting with extracellular matrix (ECM) proteins such as type IV collagen. [UniProt] |
| Calculated Mw | 295 kDa |
| PTM | Prolines at the third position of the tripeptide repeating unit (G-X-Y) are hydroxylated in some or all of the chains. [UniProt] |

Images



ARG23684 anti-Collagen VII antibody IHC-P image

Immunohistochemistry: Formaldehyde-fixed Human skin tissue section stained with ARG23684 anti-Collagen VII antibody at 1:250 for 2 hours at 21°C. Antigen Retrieval: Incubate tissue section with Proteinase K. Tissue was blocked with 1% BSA for 10 minutes at 21°C before primary antibody was added.



ARG23684 anti-Collagen VII antibody WB image

Western blot: 7.5% PhastGel under reducing condition. (A) Staining on Immunobilon-P membranes was performed by use of India ink. (B) The membranes were stained with ARG23684 anti-Collagen VII antibody at 1:50 (2h, RT).

(CI), (CIV), (CV), (CVI), (CVII): Pepsin digested Collagen type I, IV, V, VI, VII; (Ni) and (La): Nidogen and Laminin.