

ARG23716
anti-Citrulline antibody [6C2.1]Package: 50 µg
Store at: -20°C

Summary

Product Description	Mouse Monoclonal antibody [6C2.1] recognizes Citrulline
Tested Reactivity	Other
Tested Application	ELISA, ICC/IF, WB
Specificity	Specific for citrulline residues on modified proteins. Tested using citrulline conjugated Bovine Serum Albumin (BSA).
Host	Mouse
Clonality	Monoclonal
Clone	6C2.1
Isotype	IgG1
Target Name	Citrulline
Species	Others
Immunogen	Synthetic L-Citrulline conjugated to KLH.
Conjugation	Un-conjugated

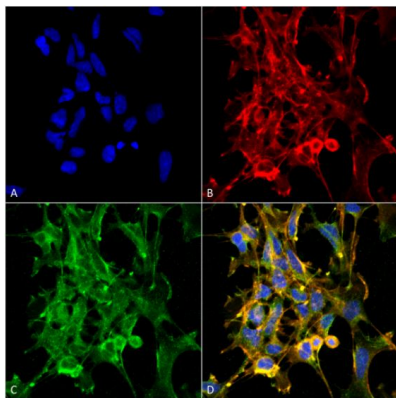
Application Instructions

Application table	Application	Dilution
	ELISA	1:1000
	ICC/IF	1:50
	WB	1:1000
Application Note	* The dilutions indicate recommended starting dilutions and the optimal dilutions or concentrations should be determined by the scientist.	

Properties

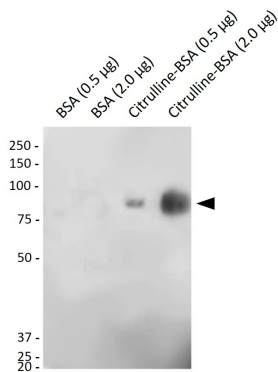
Form	Liquid
Purification	Purification with Protein G.
Buffer	PBS (pH 7.4), 0.09% Sodium azide and 50% Glycerol.
Preservative	0.09% Sodium azide
Stabilizer	50% Glycerol
Concentration	1 mg/ml
Storage instruction	For continuous use, store undiluted antibody at 2-8°C for up to a week. For long-term storage, aliquot and store at -20°C. Storage in frost free freezers is not recommended. Avoid repeated freeze/thaw cycles. Suggest spin the vial prior to opening. The antibody solution should be gently mixed before use.

Images



ARG23716 anti-Citrulline antibody [6C2.1] ICC/IF image

Immunofluorescence: HEK293 cells fixed with 5% Formaldehyde for 5 min. Cells were stained with ARG23716 anti-Citrulline antibody [6C2.1] (green) at 1:50 for 30-60 min at RT. Magnification: 20X (2X Zoom). (A) DAPI (blue) nuclear stain. (B) Phalloidin Alex Fluor 633 F-Actin stain. (C) Primary antibodies. (D) Composite.



ARG23716 anti-Citrulline antibody [6C2.1] WB image

Western blot: 0.5 µg of BSA, 2.0 µg of BSA, 0.5 µg of Citrulline-BSA and 2.0 µg of Citrulline-BSA stained with ARG23716 anti-Citrulline antibody [6C2.1] at 1:1000 for 2 hours at RT.