

ARG23720 anti-AMBRA1 antibody

Package: 50 µg
Store at: -20°C

Summary

Product Description	Rabbit Polyclonal antibody recognizes AMBRA1
Tested Reactivity	Hu
Tested Application	ICC/IF
Host	Rabbit
Clonality	Polyclonal
Isotype	IgG
Target Name	AMBRA1
Species	Human
Immunogen	Synthetic peptide around aa. 202-212 of Human AMBRA1.
Conjugation	Un-conjugated
Alternate Names	DCAF3; Activating molecule in BECN1-regulated autophagy protein 1; WDR94

Application Instructions

Application table	Application	Dilution
	ICC/IF	1:100
Application Note	* The dilutions indicate recommended starting dilutions and the optimal dilutions or concentrations should be determined by the scientist.	

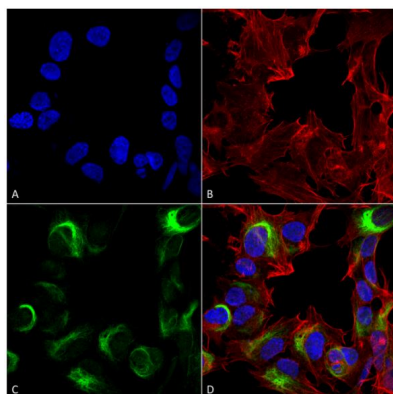
Properties

Form	Liquid
Purification	Affinity purification with immunogen.
Buffer	PBS, 0.09% Sodium azide and 50% Glycerol.
Preservative	0.09% Sodium azide
Stabilizer	50% Glycerol
Concentration	1 mg/ml
Storage instruction	For continuous use, store undiluted antibody at 2-8°C for up to a week. For long-term storage, aliquot and store at -20°C. Storage in frost free freezers is not recommended. Avoid repeated freeze/thaw cycles. Suggest spin the vial prior to opening. The antibody solution should be gently mixed before use.
Note	For laboratory research only, not for drug, diagnostic or other use.

Bioinformation

Gene Symbol	AMBRA1
Gene Full Name	autophagy/beclin-1 regulator 1
Function	Regulates autophagy and development of the nervous system. Involved in autophagy in controlling protein turnover during neuronal development, and in regulating normal cell survival and proliferation (By similarity). [UniProt]
Calculated Mw	143 kDa
Cellular Localization	Autophagosome. Note: Localizes also to discrete punctae along the ciliary axoneme. [UniProt]

Images



ARG23720 anti-AMBRA1 antibody ICC/IF image

Immunofluorescence: SK-N-BE cells fixed with 4% Formaldehyde for 15 min at RT. Cells were stained with ARG23720 anti-AMBRA1 antibody at 1:100 for 60 min at RT. Magnification: 60X. (A) DAPI (blue) nuclear stain. (B) Phalloidin Texas Red F-Actin stain. (C) Primary antibodies. (D) Composite.
