

ARG23721
anti-WDR45 antibodyPackage: 50 µg
Store at: -20°C

Summary

Product Description	Rabbit Polyclonal antibody recognizes WDR45
Tested Reactivity	Hu
Tested Application	ICC/IF, WB
Host	Rabbit
Clonality	Polyclonal
Isotype	IgG
Target Name	WDR45
Species	Human
Immunogen	Synthetic peptide around aa. 312-322 of Human WDR45.
Conjugation	Un-conjugated
Alternate Names	WD repeat-containing protein 45; WIPI-4; NBIA5; NBIA4; WIPI4; JM5; WD repeat domain phosphoinositide-interacting protein 4; WDRX1

Application Instructions

Application table	Application	Dilution
	ICC/IF	1:100
	WB	1:1000
Application Note	* The dilutions indicate recommended starting dilutions and the optimal dilutions or concentrations should be determined by the scientist.	
Observed Size	~ 40 kDa	

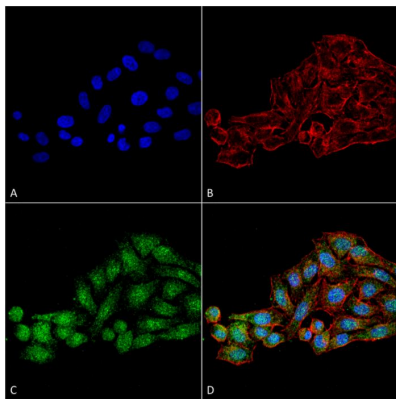
Properties

Form	Liquid
Purification	Affinity purification with immunogen.
Buffer	PBS, 0.09% Sodium azide and 50% Glycerol.
Preservative	0.09% Sodium azide
Stabilizer	50% Glycerol
Concentration	1 mg/ml
Storage instruction	For continuous use, store undiluted antibody at 2-8°C for up to a week. For long-term storage, aliquot and store at -20°C. Storage in frost free freezers is not recommended. Avoid repeated freeze/thaw cycles. Suggest spin the vial prior to opening. The antibody solution should be gently mixed before use.
Note	For laboratory research only, not for drug, diagnostic or other use.

Bioinformation

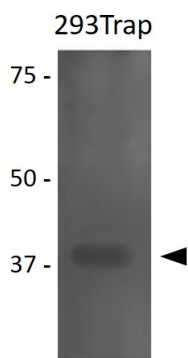
Gene Symbol	WDR45
Gene Full Name	WD repeat domain 45
Background	This gene encodes a member of the WD repeat protein family. WD repeats are minimally conserved regions of approximately 40 amino acids typically bracketed by gly-his and trp-asn (GH-WD), which may facilitate formation of heterotrimeric or multiprotein complexes. Members of this family are involved in a variety of cellular processes, including cell cycle progression, signal transduction, apoptosis, and gene regulation. This gene has a pseudogene at chromosome 4q31.3. Multiple alternatively spliced transcript variants encoding distinct isoforms have been found for this gene, but the biological validity and full-length nature of some variants have not been determined. [provided by RefSeq, Jul 2008]
Function	Plays an important role in the autophagy pathway, which is the major intracellular degradation system by which cytoplasmic materials are packaged into autophagosomes and delivered to lysosomes for degradation. [UniProt]
Calculated Mw	40 kDa

Images



ARG23721 anti-WDR45 antibody ICC/IF image

Immunofluorescence: HeLa cells fixed with 4% Formaldehyde for 15 min at RT. Cells were stained with ARG23721 anti-WDR45 antibody at 1:100 for 60 min at RT. Magnification: 60X. (A) DAPI. (B) Phalloidin Texas Red F-Actin stain. (C) Primary antibodies. (D) Composite.



ARG23721 anti-WDR45 antibody WB image

Western blot: 15 µg of Human 293Trap cell lysates stained with ARG23721 anti-WDR45 antibody at 1:1000 for 1 hour at RT.