

## ARG23723 anti-VMP1 / TMEM49 antibody

Package: 50 µg  
Store at: -20°C

### Summary

|                     |  |
|---------------------|--|
| Product Description | Rabbit Polyclonal antibody recognizes VMP1 / TMEM49                        |
| Tested Reactivity   | Hu   |
| Tested Application  | ICC/IF   |
| Host                | Rabbit   |
| Clonality           | Polyclonal   |
| Isotype             | IgG  |
| Target Name         | VMP1 / TMEM49  |
| Species             | Human  |
| Immunogen           | Synthetic peptide around aa. 391-402 of Human VMP1 / TMEM49.               |
| Conjugation         | Un-conjugated  |
| Alternate Names     | Vacuole membrane protein 1; EPG3; TANGO5; TMEM49; Transmembrane protein 49 |

### Application Instructions

|                   |  |          |
|-------------------|--|----------|
| Application table | Application  | Dilution |
|                   | ICC/IF   | 1:100    |
| Application Note  | * The dilutions indicate recommended starting dilutions and the optimal dilutions or concentrations should be determined by the scientist. |          |

### Properties

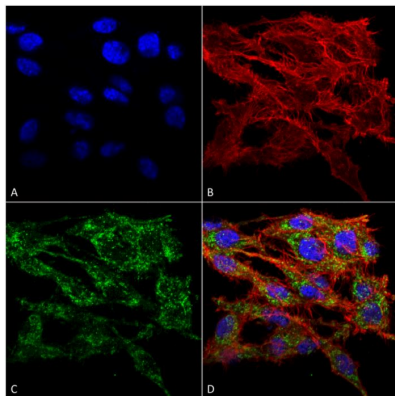
|                     |   |
|---------------------|---|
| Form                | Liquid  |
| Purification        | Affinity purification with immunogen.   |
| Buffer              | PBS, 0.09% Sodium azide and 50% Glycerol.   |
| Preservative        | 0.09% Sodium azide  |
| Stabilizer          | 50% Glycerol  |
| Concentration       | 1 mg/ml   |
| Storage instruction | For continuous use, store undiluted antibody at 2-8°C for up to a week. For long-term storage, aliquot and store at -20°C. Storage in frost free freezers is not recommended. Avoid repeated freeze/thaw cycles. Suggest spin the vial prior to opening. The antibody solution should be gently mixed before use. |
| Note                | For laboratory research only, not for drug, diagnostic or other use.  |

### Bioinformation

|                       |   |
|-----------------------|---|
| Gene Symbol           | VMP1  |
| Gene Full Name        | vacuole membrane protein 1  |
| Function              | Stress-induced protein that, when overexpressed, promotes formation of intracellular vacuoles followed by cell death. May be involved in the cytoplasmic vacuolization of acinar cells during the early stage of acute pancreatitis. Plays a role in the initial stages of the autophagic process through its interaction with BECN1 (By similarity). Involved in cell-cell adhesion. Plays an essential role in formation of cell junctions. [UniProt] |
| Calculated Mw         | 46 kDa  |
| Cellular Localization | Cell membrane, Endoplasmic Reticulum, Endoplasmic Reticulum-Golgi Intermediate Compartment Membrane, Multi-Pass Membrane Protein, Vacuole Membrane. [UniProt]   |

## Images

---



ARG23723 anti-VMP1 / TMEM49 antibody ICC/IF image

Immunofluorescence: Colon carcinoma cell line (RKO) fixed with 4% Formaldehyde for 15 min at RT. Cells were stained with ARG23723 anti-VMP1 / TMEM49 antibody at 1:100 for 60 min at RT. Magnification: 60X. (A) DAPI nuclear stain. (B) Phalloidin Texas Red F-Actin stain. (C) Primary antibodies. (D) Composite.