

## ARG23757 Goat anti-Mouse IgG (H+L) antibody (FITC), pre-adsorbed

Package: 500 µg  
Store at: 4°C

### Summary

Product Description	FITC-conjugated Goat Polyclonal antibody recognizes Mouse IgG (H+L)
Tested Reactivity	Ms
Tested Application	ELISA, ELISPOT, FACS, FLISA, ICC/IF, IHC-Fr, WB
Specificity	Reacts with the heavy and light chains of mouse IgG1, IgG2a, IgG2b, and IgG3, and with the light chains of mouse IgM and IgA as demonstrated by ELISA, FLISA, and/or flow cytometry; minimal cross reactivity with human immunoglobulins
Host	Goat
Clonality	Polyclonal
Isotype	IgG
Target Name	IgG (H+L)
Species	Mouse
Conjugation	FITC

### Application Instructions

Pre Adsorbed	Human immunoglobulins and pooled sera.	
Application table	Application	Dilution
	ELISA	Assay-dependent
	ELISPOT	Assay-dependent
	FACS	< 1 µg/10 <sup>6</sup> cells
	FLISA	1:100 - 1:400
	ICC/IF	Assay-dependent
	IHC-Fr	Assay-dependent
	WB	Assay-dependent
Application Note	* The dilutions indicate recommended starting dilutions and the optimal dilutions or concentrations should be determined by the scientist.	

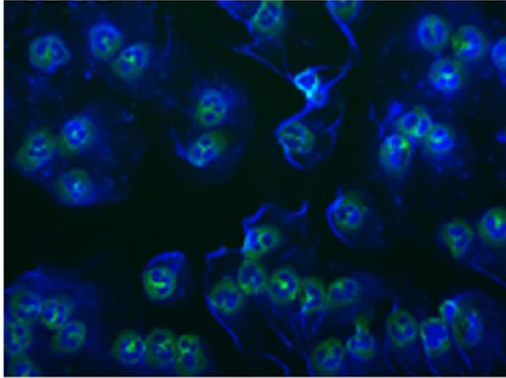
### Properties

Form	Liquid
Purification	Affinity purification with immunogen.
Buffer	PBS and 0.1% Sodium azide.
Preservative	0.1% Sodium azide

Concentration	1 mg/ml
Storage instruction	Aliquot and store in the dark at 2-8°C. Keep protected from prolonged exposure to light. Avoid repeated freeze/thaw cycles. Suggest spin the vial prior to opening. The antibody solution should be gently mixed before use.
Note	For laboratory research only, not for drug, diagnostic or other use.

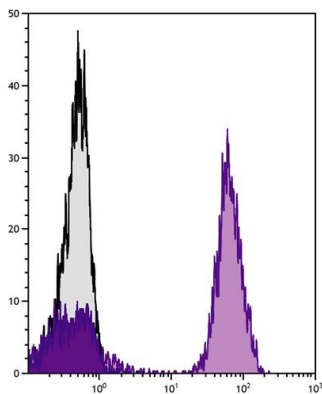
## Images

---



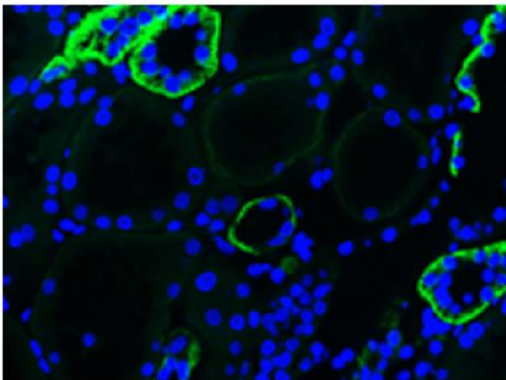
ARG23757 Goat anti-Mouse IgG (H+L) antibody (FITC), pre-adsorbed ICC/IF image

Immunofluorescence: Activated Human neutrophils of AAV patients were stained with ARG23757 Goat anti-Mouse IgG (H+L) antibody (FITC), pre-adsorbed and DAPI.



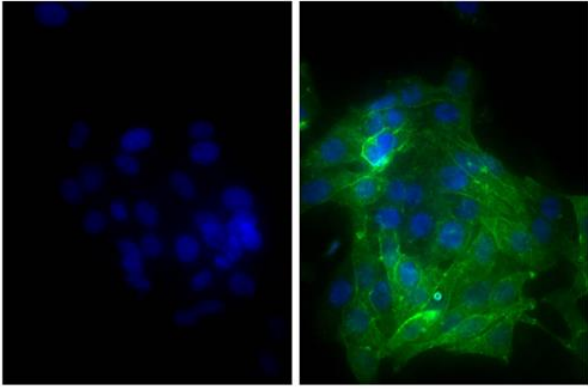
ARG23757 Goat anti-Mouse IgG (H+L) antibody (FITC), pre-adsorbed FACS image

Flow Cytometry: Human peripheral blood lymphocytes were stained with Mouse anti-Human CD3 followed by ARG23757 Goat anti-Mouse IgG (H+L) antibody (FITC), pre-adsorbed.



ARG23757 Goat anti-Mouse IgG (H+L) antibody (FITC), pre-adsorbed IHC-P image

Immunohistochemistry: Paraffin-embedded Human kidney section of AAV patients were stained with ARG23757 Goat anti-Mouse IgG (H+L) antibody (FITC), pre-adsorbed and DAPI.



ARG23757 Goat anti-Mouse IgG (H+L) antibody (FITC), pre-adsorbed  
ICC/IF image

Immunofluorescence: Human epithelial carcinoma cell line HEp-2  
was stained with Mouse anti-Human CD44 (right) followed by  
ARG23757 Goat anti-Mouse IgG (H+L) antibody (FITC), pre-adsorbed  
and DAPI.