

ARG23771 anti-Plexin A1 antibody

Package: 50 µl
Store at: -20°C

Summary

Product Description	Rabbit Polyclonal antibody recognizes Plexin A1
Tested Reactivity	Hu, Ms, Rat
Tested Application	ELISA, ICC/IF, IHC-Fr, IHC-P, IP, WB
Specificity	This antibody detects a ~220 kDa protein corresponding to the apparent molecular mass of Plexin-A1 on SDS-PAGE immunoblots of neonatal rat brain and Cos-7 cells transfected with mouse Plexin-A1. In immunocytochemistry, this antibody co-localizes with anti-Myc in Cos-7 cells transfected with Myc-tagged mouse Plexin-A1.
Host	Rabbit
Clonality	Polyclonal
Isotype	IgG
Target Name	Plexin A1
Species	Human
Immunogen	Synthetic peptide (coupled to carrier protein) around the semaphorin domain (N-terminal half) of Human Plexin A1. This sequence is highly conserved in Rat and Mouse Plexin A1, and has low homology to other Plexin family members.
Conjugation	Un-conjugated
Alternate Names	Semaphorin receptor NOV; PLEXIN-A1; PLXN1; NOV; Plexin-A1; NOV-P

Application Instructions

Application table	Application	Dilution
	ELISA	1:2000
	ICC/IF	1:100
	IHC-Fr	1:100
	IHC-P	1:100
	IP	1:50
	WB	1:1000
Application Note	WB: Antibody is suggested to be diluted in 5% skimmed milk/Tris buffer with 0.04% Tween20 and incubated for 1 hour at room temperature. IHC-P: Antigen Retrieval: Boil tissue section in Tris/EDTA buffer (pH 9.0). * The dilutions indicate recommended starting dilutions and the optimal dilutions or concentrations should be determined by the scientist.	
Observed Size	220 kDa	

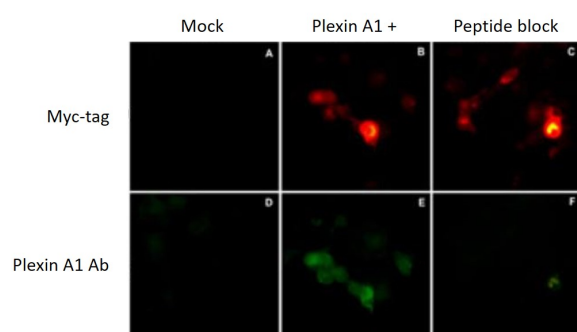
Properties

Form	Liquid
Purification	Affinity purification with immunogen.
Buffer	PBS, 0.05% Sodium azide, 50% Glycerol and 1 mg/ml BSA.
Preservative	0.05% Sodium azide
Stabilizer	50% Glycerol and 1 mg/ml BSA
Storage instruction	For continuous use, store undiluted antibody at 2-8°C for up to a week. For long-term storage, aliquot and store at -20°C. Storage in frost free freezers is not recommended. Avoid repeated freeze/thaw cycles. Suggest spin the vial prior to opening. The antibody solution should be gently mixed before use.
Note	For laboratory research only, not for drug, diagnostic or other use.

Bioinformation

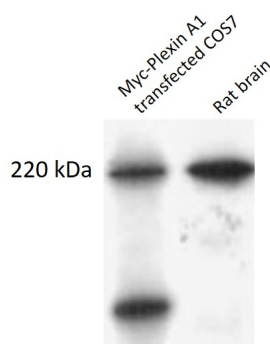
Gene Symbol	PLXNA1
Gene Full Name	plexin A1
Function	Coreceptor for SEMA3A, SEMA3C, SEMA3F and SEMA6D. Necessary for signaling by class 3 semaphorins and subsequent remodeling of the cytoskeleton. Plays a role in axon guidance, invasive growth and cell migration. Class 3 semaphorins bind to a complex composed of a neuropilin and a plexin. The plexin modulates the affinity of the complex for specific semaphorins, and its cytoplasmic domain is required for the activation of down-stream signaling events in the cytoplasm (By similarity). [UniProt]
Calculated Mw	211 kDa

Images



ARG23771 anti-Plexin A1 antibody ICC/IF image

Immunofluorescence: Double labeling using ARG23771 anti-Plexin A1 antibody in COS7 cells mock transfected (A,D) or transfected with Myc-tagged Mouse Plexin-A1 construct (B,E). The specificity of the binding in E was demonstrated by using Plexin A1 peptide in the presence of primary antibodies (C,F).



ARG23771 anti-Plexin A1 antibody WB image

Western blot: COS7 cells transfected with mouse Myc-tagged Plexin A1 and neonatal Rat brain (from left to right) stained with ARG23771 anti-Plexin A1 antibody.

Myc-Plexin A1
transfected COS7



ARG23771 anti-Plexin A1 antibody IP image

Immunoprecipitation: Myc-Plexin A1 transfected COS7
immunoprecipitated by ARG23771 anti-Plexin A1 antibody and
stained with anti-Myc antibody.