

## ARG23782 Goat anti-Mouse IgA + IgG + IgM antibody (PE), pre-adsorbed

Package: 250 µg  
Store at: 4°C

### Summary

Product Description	PE-conjugated Goat Polyclonal antibody recognizes Mouse IgA + IgG + IgM
Tested Reactivity	Ms
Tested Application	ELISA, FACS, FLISA, ICC/IF, IHC-Fr, IHC-P, WB
Specificity	Reacts with the heavy and light chains of mouse IgM, IgG1, IgG2a, IgG2b, IgG3 and IgA as demonstrated by ELISA, FLISA, and/or flow cytometry; minimal cross reactivity with human immunoglobulins
Host	Goat
Clonality	Polyclonal
Isotype	IgG
Target Name	IgA + IgG + IgM
Species	Mouse
Conjugation	PE

### Application Instructions

Pre Adsorbed	Human immunoglobulins and pooled sera.	
Application table	Application	Dilution
	ELISA	Assay-dependent
	FACS	< 0.1 µg/10 <sup>6</sup> cells
	FLISA	< 1 µg/ml
	ICC/IF	Assay-dependent
	IHC-Fr	Assay-dependent
	IHC-P	Assay-dependent
	WB	Assay-dependent
Application Note	* The dilutions indicate recommended starting dilutions and the optimal dilutions or concentrations should be determined by the scientist.	

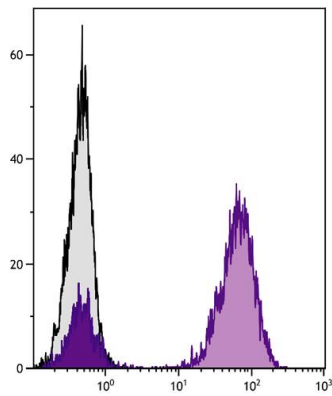
### Properties

Form	Liquid
Purification	Affinity purification with immunogen.
Buffer	PBS, 0.1% Sodium azide and Sucrose.
Preservative	0.1% Sodium azide
Stabilizer	Sucrose

Concentration	0.5 mg/ml
Storage instruction	Aliquot and store in the dark at 2-8°C. Keep protected from prolonged exposure to light. Avoid repeated freeze/thaw cycles. Suggest spin the vial prior to opening. The antibody solution should be gently mixed before use.
Note	For laboratory research only, not for drug, diagnostic or other use.

## Images

---



ARG23782 Goat anti-Mouse IgA + IgG + IgM antibody (PE) (pre-adsorbed) FACS image

Flow Cytometry: Human peripheral blood lymphocytes were stained with Mouse anti-Human CD3 followed by ARG23782 Goat anti-Mouse IgA + IgG + IgM antibody (PE) (pre-adsorbed).