

## ARG23802 Goat anti-Mouse IgG2a antibody (FITC), pre-adsorbed

Package: 500 µg  
Store at: 4°C

### Summary

Product Description	FITC-conjugated Goat Polyclonal antibody recognizes Mouse IgG2a
Tested Reactivity	Ms
Tested Application	FACS, FLISA, ICC/IF, IHC-Fr, IHC-P, WB
Specificity	Reacts with the heavy chain of mouse IgG2a as demonstrated by ELISA, FLISA, and/or flow cytometry. Minimal cross reactivity with human immunoglobulins. May react with immunoglobulins from other species.
Host	Goat
Clonality	Polyclonal
Isotype	IgG
Target Name	IgG2a
Species	Mouse
Conjugation	FITC

### Application Instructions

Pre Adsorbed Mouse IgG1, IgG2b, IgG3, IgM, and IgA; Human immunoglobulins and pooled sera.

#### Application table

Application	Dilution
FACS	< 1 µg/10 <sup>6</sup> cells
FLISA	1:100 - 1:400
ICC/IF	Assay-dependent
IHC-Fr	Assay-dependent
IHC-P	Assay-dependent
WB	Assay-dependent

Application Note \* The dilutions indicate recommended starting dilutions and the optimal dilutions or concentrations should be determined by the scientist.

### Properties

Form	Liquid
Purification	Affinity purification with immunogen.
Buffer	PBS and 0.1% Sodium azide.
Preservative	0.1% Sodium azide
Concentration	1 mg/ml

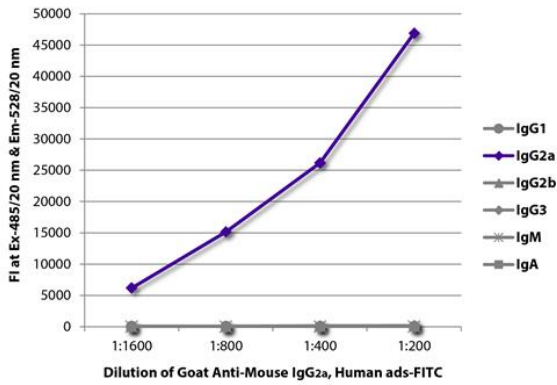
**Storage instruction**

Aliquot and store in the dark at 2-8°C. Keep protected from prolonged exposure to light. Avoid repeated freeze/thaw cycles. Suggest spin the vial prior to opening. The antibody solution should be gently mixed before use.

**Note**

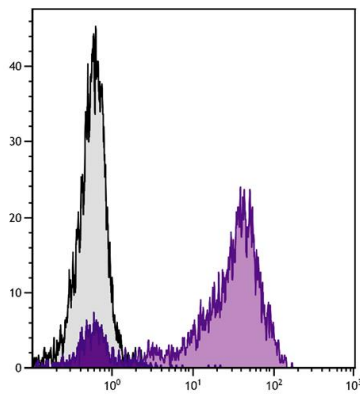
For laboratory research only, not for drug, diagnostic or other use.

**Images**



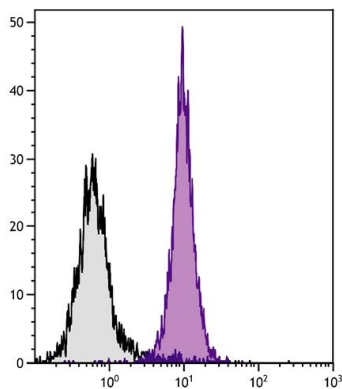
ARG23802 Goat anti-Mouse IgG2a antibody (FITC) (pre-adsorbed)  
FLISA image

FLISA: The plate was coated with purified Mouse IgG1, IgG2a, IgG2b, IgG3, IgM and IgA. Immunoglobulins were detected with serially diluted ARG23802 Goat anti-Mouse IgG2a antibody (FITC) (pre-adsorbed).



ARG23802 Goat anti-Mouse IgG2a antibody (FITC) (pre-adsorbed)  
FACS image

Flow Cytometry: Human peripheral blood lymphocytes stained with Mouse anti-Human CD5 antibody followed by ARG23802 Goat anti-Mouse IgG2a antibody (FITC) (pre-adsorbed).



ARG23802 Goat anti-Mouse IgG2a antibody (FITC) (pre-adsorbed)  
FACS image

Flow Cytometry: BALB/c Mouse splenocytes stained with [ARG21071](#) anti-MHC Class I H2 Db antibody [28-14-8] followed by ARG23802 Goat anti-Mouse IgG2a antibody (FITC) (pre-adsorbed).