

ARG23804 Goat anti-Mouse IgG2a antibody (AP), pre-adsorbed

Package: 500 µl
Store at: 4°C

Summary

Product Description	AP-conjugated Goat Polyclonal antibody recognizes Mouse IgG2a
Tested Reactivity	Ms
Tested Application	ELISA, ELISPOT, FACS, FLISA, ICC/IF, IHC-Fr, IHC-P, Puri, WB
Specificity	Reacts with the heavy chain of mouse IgG2a as demonstrated by ELISA, FLISA, and/or flow cytometry. Minimal cross reactivity with human immunoglobulins. May react with immunoglobulins from other species.
Host	Goat
Clonality	Polyclonal
Isotype	IgG
Target Name	IgG2a
Species	Mouse
Conjugation	AP

Application Instructions

Pre Adsorbed Mouse IgG1, IgG2b, IgG3, IgM, and IgA; Human immunoglobulins and pooled sera.

Application table

Application	Dilution
ELISA	1:2000 - 1:4000
ELISPOT	Assay-dependent
FACS	Assay-dependent
FLISA	Assay-dependent
ICC/IF	Assay-dependent
IHC-Fr	Assay-dependent
IHC-P	Assay-dependent
Puri	Assay-dependent
WB	Assay-dependent

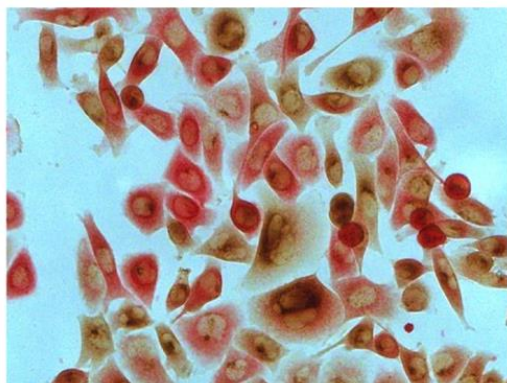
Application Note * The dilutions indicate recommended starting dilutions and the optimal dilutions or concentrations should be determined by the scientist.

Properties

Form	Liquid
Purification	Affinity purification with immunogen.

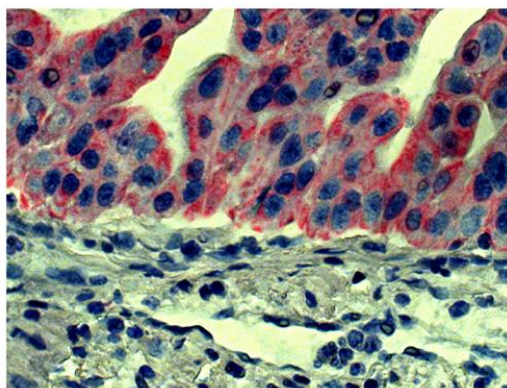
Buffer	Tris (pH 8.0), 0.1% Sodium azide, 1 mM MgCl ₂ and 50% Glycerol.
Preservative	0.1% Sodium azide
Stabilizer	50% Glycerol
Storage instruction	Aliquot and store in the dark at 2-8°C. Keep protected from prolonged exposure to light. Avoid repeated freeze/thaw cycles. Suggest spin the vial prior to opening. The antibody solution should be gently mixed before use.
Note	For laboratory research only, not for drug, diagnostic or other use.

Images



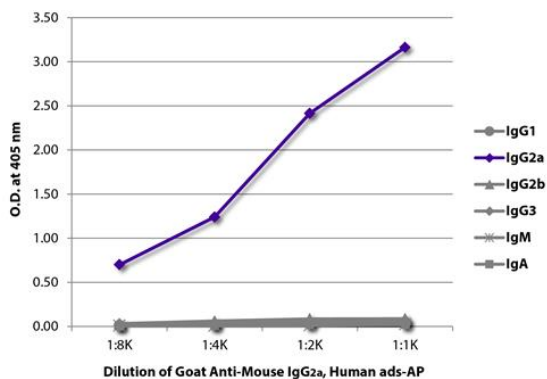
ARG23804 Goat anti-Mouse IgG2a antibody (AP), pre-adsorbed ICC/IF image

Immunofluorescence: Human pancreatic carcinoma cell line MIA PaCa-2 was stained with ARG22307 anti-Cytokeratin 8 antibody [SB37b] and ARG21506 anti-MMP1 antibody [SB12e] followed by ARG23804 Goat anti-Mouse IgG2a antibody (AP), pre-adsorbed and ARG21894 Goat anti-Mouse IgG2b antibody (HRP), pre-adsorbed, Red AP, DAB, and mounted with Fluoromount-G.



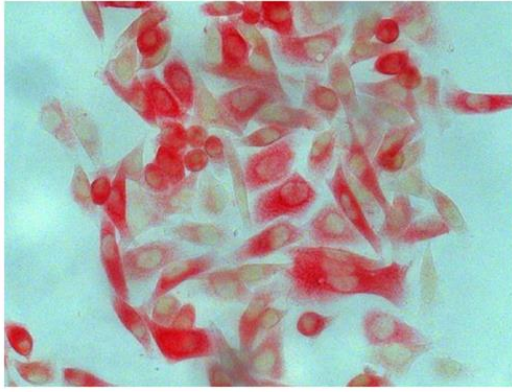
ARG23804 Goat anti-Mouse IgG2a antibody (AP), pre-adsorbed IHC-P image

Immunohistochemistry: Paraffin-embedded Human gastric cancer tissue was stained with Mouse anti-Human CD44 followed by ARG23804 Goat anti-Mouse IgG2a antibody (AP), pre-adsorbed, Red AP, hematoxylin, and mounted with Fluoromount-G.



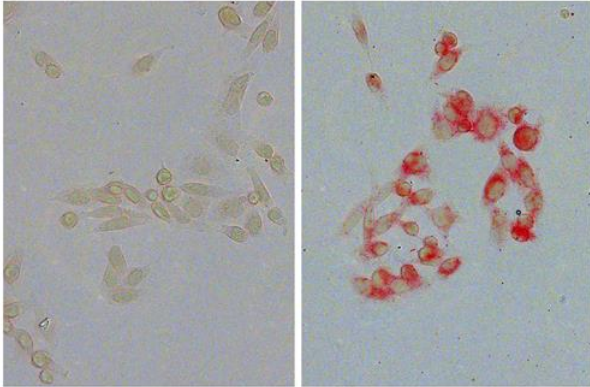
ARG23804 Goat anti-Mouse IgG2a antibody (AP), pre-adsorbed ELISA image

ELISA: ELISA plate was coated with purified Mouse IgG1, IgG2a, IgG2b, IgG3, IgM, and IgA. Immunoglobulins were detected with serially diluted ARG23804 Goat anti-Mouse IgG2a antibody (AP), pre-adsorbed.



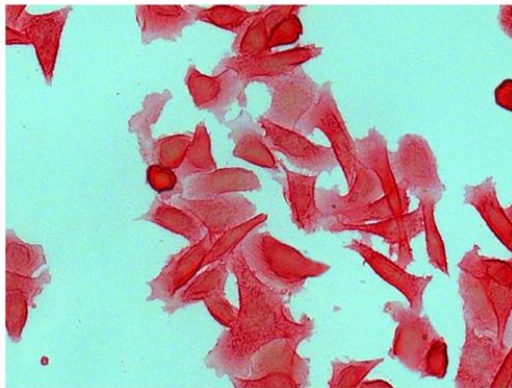
ARG23804 Goat anti-Mouse IgG2a antibody (AP), pre-adsorbed
ICC/IF image

Immunofluorescence: Human pancreatic carcinoma cell line MIA PaCa-2 was stained with ARG22307 anti-Cytokeratin 8 antibody [SB37b] followed by ARG23804 Goat anti-Mouse IgG2a antibody (AP), pre-adsorbed, Red AP, and mounted with Fluoromount-G.



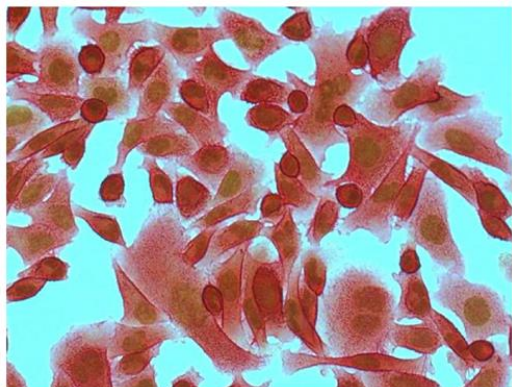
ARG23804 Goat anti-Mouse IgG2a antibody (AP), pre-adsorbed
ICC/IF image

Immunofluorescence: Human pancreatic carcinoma cell line MIA PaCa-2 was stained with Mouse anti-Human EGFR (right) followed by ARG23804 Goat anti-Mouse IgG2a antibody (AP), pre-adsorbed, Red AP, and mounted with Fluoromount-G.



ARG23804 Goat anti-Mouse IgG2a antibody (AP), pre-adsorbed
ICC/IF image

Immunofluorescence: Human pancreatic carcinoma cell line MIA PaCa-2 was stained with Mouse anti-Human CD44 followed by ARG23804 Goat anti-Mouse IgG2a antibody (AP), pre-adsorbed, Red AP, and mounted with Fluoromount-G.



ARG23804 Goat anti-Mouse IgG2a antibody (AP), pre-adsorbed
ICC/IF image

Immunofluorescence: Human pancreatic carcinoma cell line MIA PaCa-2 was stained with Mouse anti-Human CD44 and Mouse anti-Acetyl-Histone H3 (Lys4) followed by ARG23804 Goat anti-Mouse IgG2a antibody (AP), pre-adsorbed and ARG21894 Goat anti-Mouse IgG2b antibody (HRP), pre-adsorbed, Red AP, DAB, and mounted with Fluoromount-G.