

ARG23839
Goat anti-Rabbit IgG (H+L) antibody, pre-adsorbedPackage: 500 µg
Store at: -20°C

Summary

Product Description	Goat Polyclonal antibody recognizes Rabbit IgG (H+L)
Tested Reactivity	Rb
Tested Application	ELISA, FACS, FLISA, ICC/IF, IHC-Fr, IHC-P, IHC-Wmt, WB
Specificity	Reacts with the heavy and light chains of rabbit IgG and the light chains of rabbit IgM
Host	Goat
Clonality	Polyclonal
Isotype	IgG
Target Name	IgG (H+L)
Species	Rabbit
Conjugation	Un-conjugated

Application Instructions

Pre Adsorbed Mouse and Human immunoglobulins and pooled sera.

Application table

Application	Dilution
ELISA	Assay-dependent
FACS	Assay-dependent
FLISA	Assay-dependent
ICC/IF	Assay-dependent
IHC-Fr	Assay-dependent
IHC-P	Assay-dependent
IHC-Wmt	Assay-dependent
WB	Assay-dependent

Application Note * The dilutions indicate recommended starting dilutions and the optimal dilutions or concentrations should be determined by the scientist.

Properties

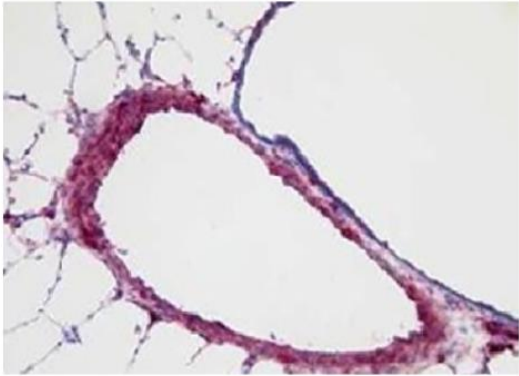
Form	Liquid
Purification	Affinity purification with immunogen.
Buffer	BBS (pH 8.2).
Concentration	1 mg/ml
Storage instruction	For continuous use, store undiluted antibody at 2-8°C for up to a week. For long-term storage, aliquot

and store at -20°C or below. Storage in frost free freezers is not recommended. Avoid repeated freeze/thaw cycles. Suggest spin the vial prior to opening. The antibody solution should be gently mixed before use.

Note

For laboratory research only, not for drug, diagnostic or other use.

Images



ARG23839 Goat anti-Rabbit IgG (H+L) antibody, pre-adsorbed IHC-Fr image

Immunohistochemistry: Frozen section of Mouse lung tissue following 21 days of hypoxia was stained with ARG23839 Goat anti-Rabbit IgG (H+L) antibody, pre-adsorbed followed by an AP-conjugated secondary antibody and a substrate for the detection of alkaline phosphatase.