

**ARG23848**  
**Mouse anti-Rabbit IgG antibody [2A9] (HRP)**Package: 500 µl  
Store at: 4°C

### Summary

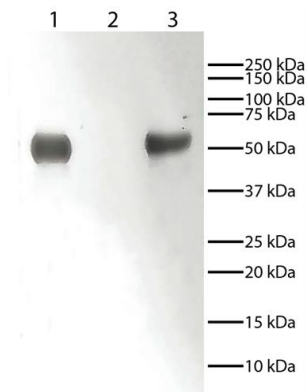
Product Description	HRP-conjugated Mouse Monoclonal antibody [2A9] recognizes Rabbit IgG
Tested Reactivity	Rb
Tested Application	ELISA, FACS, FLISA, IHC-P, WB
Host	Mouse
Clonality	Monoclonal
Clone	2A9
Isotype	IgG1
Target Name	IgG
Species	Rabbit
Conjugation	HRP

### Application Instructions

Application table	Application	Dilution
	ELISA	1:4000 - 1:8000
	FACS	Assay-dependent
	FLISA	Assay-dependent
	IHC-P	Assay-dependent
	WB	Assay-dependent
Application Note	* The dilutions indicate recommended starting dilutions and the optimal dilutions or concentrations should be determined by the scientist.	

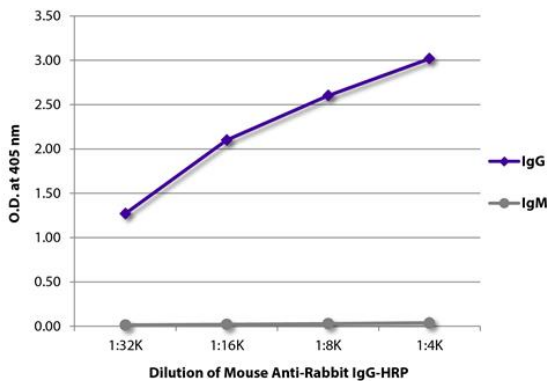
### Properties

Form	Liquid
Buffer	PBS (pH 7.4) and 50% Glycerol.
Stabilizer	50% Glycerol
Storage instruction	Aliquot and store in the dark at 2-8°C. Keep protected from prolonged exposure to light. Avoid repeated freeze/thaw cycles. Suggest spin the vial prior to opening. The antibody solution should be gently mixed before use.
Note	For laboratory research only, not for drug, diagnostic or other use.



ARG23848 Mouse anti-Rabbit IgG antibody [2A9] (HRP) WB image

Western blot: 1) Rabbit IgG, 2) Rabbit IgG Light Chains and 3) Rabbit IgG Heavy Chains. Rabbit immunoglobulins above were resolved by electrophoresis under reducing conditions, transferred to PVDF membrane, and probed with ARG23848 Mouse anti-Rabbit IgG antibody [2A9] (HRP). Proteins were visualized using chemiluminescent detection.



ARG23848 Mouse anti-Rabbit IgG antibody [2A9] (HRP) ELISA image

ELISA: ELISA plate was coated with purified Rabbit IgG and IgM. Immunoglobulins were detected with serially diluted ARG23848 Mouse anti-Rabbit IgG antibody [2A9] (HRP).