

ARG23885 Goat anti-Human IgA + IgG + IgM antibody (PE)

Package: 250 µg
Store at: 4°C

Summary

Product Description	PE-conjugated Goat Polyclonal antibody recognizes Human IgA + IgG + IgM
Tested Reactivity	Hu
Tested Application	FACS, FLISA, ICC/IF, WB
Specificity	Reacts with the heavy and light chains of Human IgG, IgM, and IgA.
Host	Goat
Clonality	Polyclonal
Isotype	IgG
Target Name	IgA + IgG + IgM
Species	Human
Immunogen	Human IgG, IgM, and IgA.
Conjugation	PE

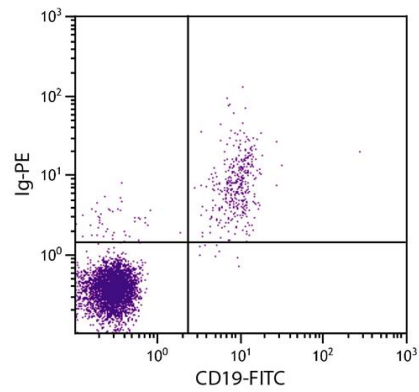
Application Instructions

Application table	Application	Dilution
	FACS	< 0.1 µg/10 ⁶ cells
	FLISA	< 1 µg/ml
	ICC/IF	Assay-dependent
	WB	Assay-dependent
Application Note	* The dilutions indicate recommended starting dilutions and the optimal dilutions or concentrations should be determined by the scientist.	

Properties

Form	Liquid
Purification	Affinity purification with immunogen.
Buffer	PBS, 0.1% Sodium azide and Sucrose.
Preservative	0.1% Sodium azide
Stabilizer	Sucrose
Concentration	0.5 mg/ml
Storage instruction	Aliquot and store in the dark at 2-8°C. Keep protected from prolonged exposure to light. Avoid repeated freeze/thaw cycles. Suggest spin the vial prior to opening. The antibody solution should be gently mixed before use.

Images



ARG23885 Goat anti-Human IgA + IgG + IgM antibody (PE) FACS image

Flow Cytometry: Human peripheral blood lymphocytes stained with ARG23885 Goat anti-Human IgA + IgG + IgM antibody (PE) and [ARG21258](#) anti-CD19 antibody [SJ25-C1] (FITC).