

ARG23889 anti-CD23 antibody [Tu1]

Package: 100 µg
Store at: -20°C

Summary

Product Description	Mouse Monoclonal antibody [Tu1] recognizes CD23
Tested Reactivity	Hu
Tested Application	BL, FACS, ICC/IF, IHC-Fr, WB
Host	Mouse
Clonality	Monoclonal
Clone	Tu1
Isotype	IgG3, kappa
Target Name	CD23
Species	Human
Immunogen	Purified Human tonsil lymphocytes (KR3598 cells).
Conjugation	Un-conjugated
Alternate Names	CD23A; BLAST-2; Lymphocyte IgE receptor; CLEC4J; Immunoglobulin E-binding factor; CD23; IGEBF; Fc-epsilon-RII; CD antigen CD23; FCE2; Low affinity immunoglobulin epsilon Fc receptor; C-type lectin domain family 4 member J

Application Instructions

Application table	Application	Dilution
	BL	Assay-dependent
	FACS	< 1 µg/10 ⁶ cells
	ICC/IF	Assay-dependent
	IHC-Fr	Assay-dependent
	WB	Assay-dependent
	Application Note	* The dilutions indicate recommended starting dilutions and the optimal dilutions or concentrations should be determined by the scientist.

Properties

Form	Liquid
Purification	Affinity purification with immunogen.
Buffer	BBS (pH 8.2)
Concentration	0.1 mg/ml
Storage instruction	For continuous use, store undiluted antibody at 2-8°C for up to a week. For long-term storage, aliquot and store at -20°C or below. Storage in frost free freezers is not recommended. Avoid repeated freeze/thaw cycles. Suggest spin the vial prior to opening. The antibody solution should be gently mixed

before use.

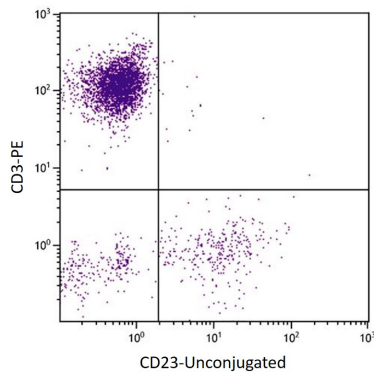
Note

For laboratory research only, not for drug, diagnostic or other use.

Bioinformation

Gene Symbol	FCER2
Gene Full Name	Fc fragment of IgE, low affinity II, receptor for (CD23)
Background	The protein encoded by this gene is a B-cell specific antigen, and a low-affinity receptor for IgE. It has essential roles in B cell growth and differentiation, and the regulation of IgE production. This protein also exists as a soluble secreted form, then functioning as a potent mitogenic growth factor. Alternatively spliced transcript variants encoding different isoforms have been described for this gene.[provided by RefSeq, Jul 2011]
Function	Low-affinity receptor for immunoglobulin E (IgE) and CR2/CD21. Has essential roles in the regulation of IgE production and in the differentiation of B-cells (it is a B-cell-specific antigen). [UniProt]
Calculated Mw	36 kDa
PTM	N- and O-glycosylated. The secreted form sCD23 is produced by ADAM10-mediated ectodomain shedding. [UniProt]
Cellular Localization	Cell membrane; Single-pass type II membrane protein. Cell membrane; Lipid-anchor. Secreted. Note=Also exists as a soluble excreted form, sCD23. [UniProt]

Images



ARG23889 anti-CD23 antibody [Tü1] FACS image

Flow Cytometry: Human peripheral blood lymphocytes stained with ARG23889 anti-CD23 antibody [Tü1] and anti-Human CD3 antibody (PE) followed by ARG21899 Goat anti-Mouse IgG3 antibody (FITC), pre-adsorbed.