

ARG23933 Mouse anti-Human IgG (Fc) antibody [JDC-10] (HRP)

Package: 500 µl
Store at: 4°C

Summary

Product Description	HRP-conjugated Mouse Monoclonal antibody [JDC-10] recognizes Human IgG (Fc)
Tested Reactivity	Hu, Chimp, R. Mk
Tested Application	ELISA, FACS, FLISA, IHC-P, WB
Host	Mouse
Clonality	Monoclonal
Clone	JDC-10
Isotype	IgG1, kappa
Target Name	IgG (Fc)
Species	Human
Immunogen	Purified Human IgG1 myeloma protein.
Conjugation	HRP

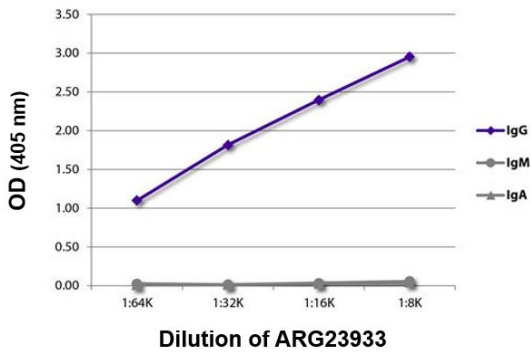
Application Instructions

Application table	Application	Dilution
	ELISA	1:2000 - 1:8000
	FACS	Assay-dependent
	FLISA	Assay-dependent
	IHC-P	Assay-dependent
	WB	Assay-dependent

Application Note * The dilutions indicate recommended starting dilutions and the optimal dilutions or concentrations should be determined by the scientist.

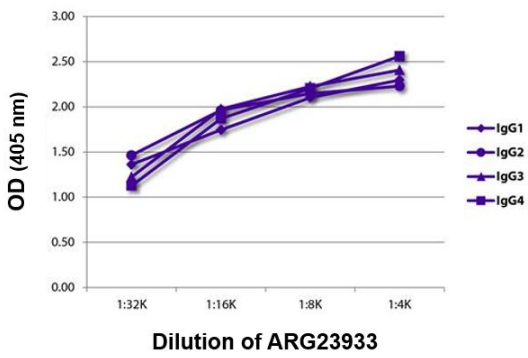
Properties

Form	Liquid
Buffer	PBS (pH 7.4) and 50% Glycerol.
Stabilizer	50% Glycerol
Storage instruction	Aliquot and store in the dark at 2-8°C. Keep protected from prolonged exposure to light. Avoid repeated freeze/thaw cycles. Suggest spin the vial prior to opening. The antibody solution should be gently mixed before use.
Note	For laboratory research only, not for drug, diagnostic or other use.



ARG23933 Mouse anti-Human IgG (Fc) antibody [JDC-10] (HRP)
ELISA image

ELISA: The plate was coated with purified Human IgG, IgM, and IgA. Immunoglobulins were detected with serially diluted ARG23933 Mouse anti-Human IgG (Fc) antibody [JDC-10] (HRP).



ARG23933 Mouse anti-Human IgG (Fc) antibody [JDC-10] (HRP)
ELISA image

ELISA: The plate was coated with purified Human IgG1, IgG2, IgG3, and IgG4. Immunoglobulins were detected with serially diluted ARG23933 Mouse anti-Human IgG (Fc) antibody [JDC-10] (HRP).