

ARG23937
Mouse anti-Human IgG (Fc) antibody [JDC-10]Package: 250 µg
Store at: -20°C

Summary

Product Description	Mouse Monoclonal antibody [JDC-10] recognizes Human IgG (Fc)
Tested Reactivity	Hu, Chimp, R. Mk
Tested Application	ELISA, FACS, FLISA, IHC-P, WB
Host	Mouse
Clonality	Monoclonal
Clone	JDC-10
Isotype	IgG1, kappa
Target Name	IgG (Fc)
Species	Human
Immunogen	Purified Human IgG1 myeloma protein.
Conjugation	Un-conjugated

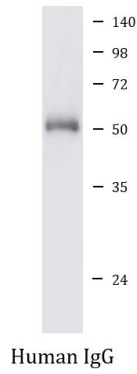
Application Instructions

Application table	Application	Dilution
	ELISA	Assay-dependent
	FACS	< 1 µg/10 ⁶ cells
	FLISA	Assay-dependent
	IHC-P	Assay-dependent
	WB	Assay-dependent

Application Note * The dilutions indicate recommended starting dilutions and the optimal dilutions or concentrations should be determined by the scientist.

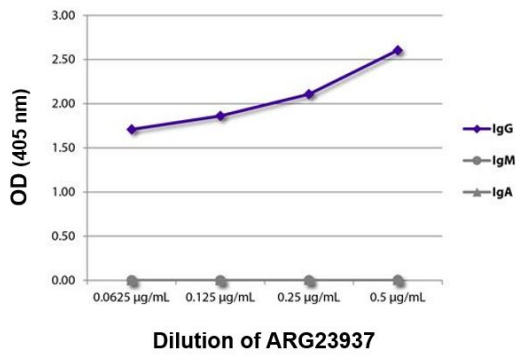
Properties

Form	Liquid
Buffer	BBS (pH 8.2)
Concentration	0.5 mg/ml
Storage instruction	For continuous use, store undiluted antibody at 2-8°C for up to a week. For long-term storage, aliquot and store at -20°C or below. Storage in frost free freezers is not recommended. Avoid repeated freeze/thaw cycles. Suggest spin the vial prior to opening. The antibody solution should be gently mixed before use.
Note	For laboratory research only, not for drug, diagnostic or other use.



ARG23937 Mouse anti-Human IgG (Fc) antibody [JDC-10] WB image

Western blot: Human IgG stained with ARG23937 Mouse anti-Human IgG (Fc) antibody [JDC-10].



ARG23937 Mouse anti-Human IgG (Fc) antibody [JDC-10] ELISA image

ELISA: The plate was coated with purified Human IgG, IgM, and IgA. Immunoglobulins were detected with serially diluted ARG23937 Mouse anti-Human IgG (Fc) antibody [JDC-10], followed by [ARG21886](#) Goat anti-Mouse IgG1 antibody (HRP) (pre-adsorbed).