

ARG23978
anti-Rab5 antibodyPackage: 50 µg
Store at: -20°C**Summary**

Product Description	Rabbit Polyclonal antibody recognizes Rab5
Tested Reactivity	Hu, Ms
Tested Application	ICC/IF, IHC-P, WB
Host	Rabbit
Clonality	Polyclonal
Isotype	IgG
Target Name	Rab5
Species	Human
Immunogen	KLH-conjugated synthetic peptide of Human Rab5.
Conjugation	Un-conjugated
Alternate Names	Ras-related protein Rab-5A; RAB5

Application Instructions

Application table	Application	Dilution
	ICC/IF	1:80
	IHC-P	1:80
	WB	1:1000
Application Note	* The dilutions indicate recommended starting dilutions and the optimal dilutions or concentrations should be determined by the scientist.	
Observed Size	~ 24 kDa	

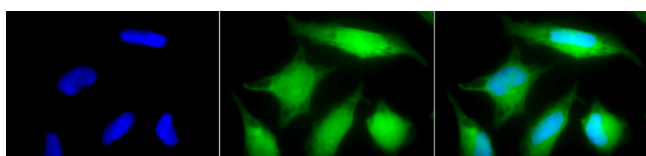
Properties

Form	Liquid
Purification	Purification with Protein A.
Buffer	PBS, 0.09% Sodium azide and 50% Glycerol.
Preservative	0.09% Sodium azide
Stabilizer	50% Glycerol
Concentration	1 mg/ml
Storage instruction	For continuous use, store undiluted antibody at 2-8°C for up to a week. For long-term storage, aliquot and store at -20°C. Storage in frost free freezers is not recommended. Avoid repeated freeze/thaw cycles. Suggest spin the vial prior to opening. The antibody solution should be gently mixed before use.

Bioinformation

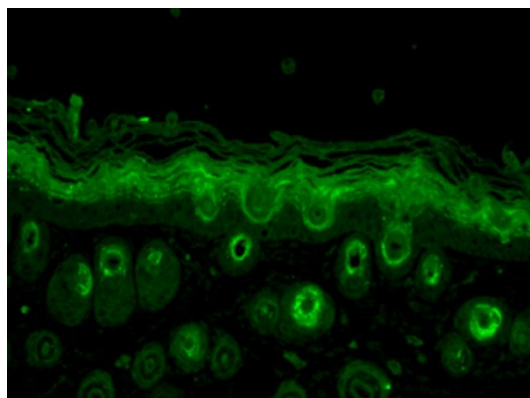
Gene Symbol	RAB5A
Gene Full Name	RAB5A, member RAS oncogene family
Function	The small GTPases Rab are key regulators of intracellular membrane trafficking, from the formation of transport vesicles to their fusion with membranes. Rabs cycle between an inactive GDP-bound form and an active GTP-bound form that is able to recruit to membranes different sets of downstream effectors directly responsible for vesicle formation, movement, tethering and fusion. RAB5A is required for the fusion of plasma membranes and early endosomes. Contributes to the regulation of filopodia extension. [UniProt]
Calculated Mw	24 kDa
Cellular Localization	Cell membrane; Lipid-anchor; Cytoplasmic side. Early endosome membrane; Lipid-anchor. Melanosome. Cytoplasmic vesicle. Cell projection, ruffle. Membrane. Cytoplasm, cytosol. Cytoplasmic vesicle, phagosome membrane. Endosome membrane. Note=Enriched in stage I melanosomes (PubMed:17081065). Alternates between membrane-bound and cytosolic forms (Probable). [UniProt]

Images



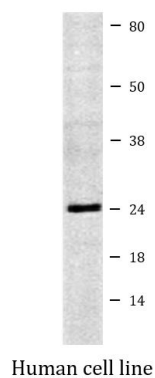
ARG23978 anti-Rab5 antibody ICC/IF image

Immunofluorescence: HeLa cells fixed with 2% Formaldehyde for 20 min at RT. Cells were stained with ARG23978 anti-Rab5 antibody (green) at 1:80 dilution for 12 hours at 4°C. DAPI (blue) for nuclear staining.



ARG23978 anti-Rab5 antibody IHC-P image

Immunohistochemistry: Bouin's fixative solution fixed Mouse backskin. The tissue section was stained with ARG23978 anti-Rab5 antibody at 1:100 dilution for 1 hour at RT.



ARG23978 anti-Rab5 antibody WB image

Western blot: 15 µg of Human cell line lysate. Block: 1.5% BSA for 30 minutes at RT. The blot was stained with ARG23978 anti-Rab5 antibody at 1:1000 dilution for 2 hours at RT.