

## ARG24052 anti-Biotin antibody [SB58c] (HRP)

Package: 500 µl  
Store at: 4°C

### Summary

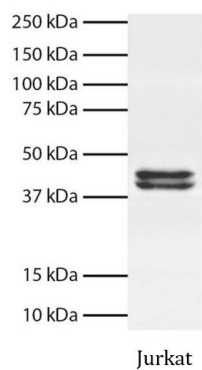
Product Description	HRP-conjugated Mouse Monoclonal antibody [SB58c] recognizes Biotin
Tested Reactivity	Other
Tested Application	ELISA, FLISA, WB
Host	Mouse
Clonality	Monoclonal
Clone	SB58c
Isotype	IgG1
Target Name	Biotin
Species	Others
Immunogen	KLH-conjugated Biotin
Conjugation	HRP

### Application Instructions

Application table	Application	Dilution
	ELISA	1:4000 - 1:8000
	FLISA	Assay-dependent
	WB	Assay-dependent
Application Note	* The dilutions indicate recommended starting dilutions and the optimal dilutions or concentrations should be determined by the scientist.	

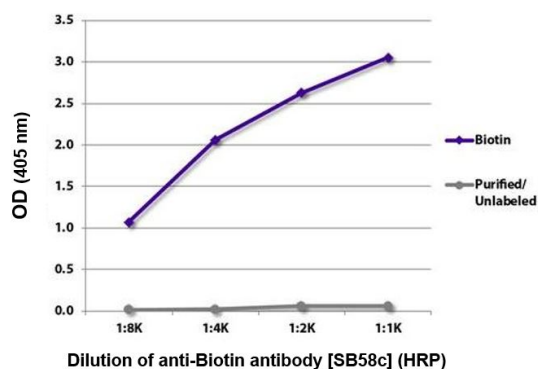
### Properties

Form	Liquid
Purification	Affinity purification with immunogen.
Buffer	PBS (pH 7.4) and 50% Glycerol.
Stabilizer	50% Glycerol
Storage instruction	Aliquot and store in the dark at 2-8°C. Keep protected from prolonged exposure to light. Avoid repeated freeze/thaw cycles. Suggest spin the vial prior to opening. The antibody solution should be gently mixed before use.
Note	For laboratory research only, not for drug, diagnostic or other use.



ARG24052 anti-Biotin antibody [SB58c] (HRP) WB image

Western blot: Jurkat total cell lysate stained with anti-ERK1 + ERK2 antibody (Biotin). Secondary antibody: ARG24052 anti-Biotin antibody [SB58c] (HRP).



ARG24052 anti-Biotin antibody [SB58c] (HRP) ELISA image

ELISA: The plate was coated with [ARG21905](#) Goat anti-Human IgG antibody (Biotin) (pre-adsorbed) and purified Rat IgG2b kappa. Biotin conjugated antibody and purified immunoglobulin were detected with serially diluted ARG24052 anti-Biotin antibody [SB58c] (HRP).