

ARG24128
anti-LRRK2 antibody [S231B-34]Package: 50 µg
Store at: -20°C

Summary

Product Description	Mouse Polyclonal antibody [S231B-34] recognizes LRRK2
Tested Reactivity	Hu, Rat
Tested Application	ICC/IF, IHC-P, WB
Host	Mouse
Clonality	Monoclonal
Clone	S231B-34
Isotype	IgG2a
Target Name	LRRK2
Species	Human
Immunogen	Fusion protein a.a 841-960 of human LRRK2
Conjugation	Un-conjugated
Alternate Names	PARK8; RIPK7; ROCO2; AURA17; DARDARIN; Leucine-rich repeat serine/threonine-protein kinase 2; Parkinson Disease (Autosomal Dominant) 8; Augmented In Rheumatoid Arthritis 17

Application Instructions

Application table	Application	Dilution
	ICC/IF	Assay-dependent
	IHC-P	Assay-dependent
	WB	1:100
Application Note	* The dilutions indicate recommended starting dilutions and the optimal dilutions or concentrations should be determined by the scientist.	

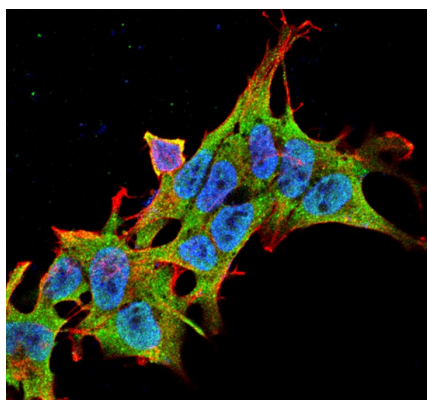
Properties

Form	Liquid
Purification	Purification with Protein G.
Buffer	PBS (pH 7.4), 50% Glycerol and 0.09% Sodium azide
Preservative	0.09% Sodium azide
Stabilizer	50% Glycerol
Concentration	1 mg/ml
Storage instruction	For continuous use, store undiluted antibody at 2-8°C for up to a week. For long-term storage, aliquot and store at -20°C. Storage in frost free freezers is not recommended. Avoid repeated freeze/thaw cycles. Suggest spin the vial prior to opening. The antibody solution should be gently mixed before use.

Bioinformation

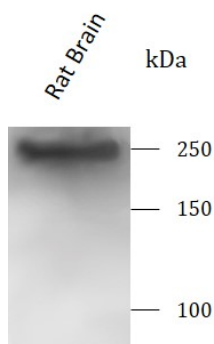
Gene Symbol	LRRK2
Gene Full Name	leucine rich repeat kinase 2
Background	This gene is a member of the leucine-rich repeat kinase family and encodes a protein with an ankryin repeat region, a leucine-rich repeat (LRR) domain, a kinase domain, a DFG-like motif, a RAS domain, a GTPase domain, a MLK-like domain, and a WD40 domain. The protein is present largely in the cytoplasm but also associates with the mitochondrial outer membrane. Mutations in this gene have been associated with Parkinson disease-8. [provided by RefSeq, Jul 2008]
Function	LRRK2 (Leucine Rich Repeat Kinase 2) is a Protein Coding gene. Diseases associated with LRRK2 include Parkinson Disease 8, Autosomal Dominant and Hereditary Late-Onset Parkinson Disease. Among its related pathways are Signaling by PTK6 and ncRNAs involved in Wnt signaling in hepatocellular carcinoma. Gene Ontology (GO) annotations related to this gene include protein homodimerization activity and transferase activity, transferring phosphorus-containing groups. An important paralog of this gene is BRAF. [GeneCard]
Highlight	Related products: anti-LRRK2 antibody [S231B-34]
Calculated Mw	286 kDa
PTM	Phosphoprotein
Cellular Localization	Cell projection; Cytoplasmic vesicle; Endoplasmic reticulum; Endosome; Golgi apparatus; Lysosome; Membrane; Mitochondrion; Mitochondrion outer membrane; Synapse

Images



ARG24128 anti-LRRK2 antibody [S231B-34] ICC/IF image

Immunofluorescence: SK-N-BE stained with ARG24128 anti-LRRK2 antibody [S231B-34] at 1:100 dilution.



ARG24128 anti-LRRK2 antibody [S231B-34] WB image

Western blot: Rat Brain stained with ARG24128 anti-LRRK2 antibody [S231B-34] at 1:200 dilution.