

ARG24168 anti-PPM1H antibody [10D2]

Package: 50 µg
Store at: -20°C

Summary

Product Description	Mouse Monoclonal antibody [10D2] recognizes PPM1H
Tested Reactivity	Hu, Ms, Rat
Tested Application	ICC/IF, WB
Host	Mouse
Clonality	Monoclonal
Clone	10D2
Isotype	IgG1
Target Name	PPM1H
Species	Human
Immunogen	Human PPM1H Recombinant Protein
Conjugation	Un-conjugated
Alternate Names	PPM1H; Protein Phosphatase, Mg ²⁺ /Mn ²⁺ Dependent 1H; KIAA1157; NERPP-2C; ARHCL1; Neurite Extension-Related Protein Phosphatase Related To PP2C; Protein Phosphatase 1H (PP2C Domain Containing); Ras Homolog Gene Family, Member C Like 1; Protein Phosphatase 1H

Application Instructions

Application table	Application	Dilution
	ICC/IF	1:500
	WB	1:1000
Application Note	* The dilutions indicate recommended starting dilutions and the optimal dilutions or concentrations should be determined by the scientist.	

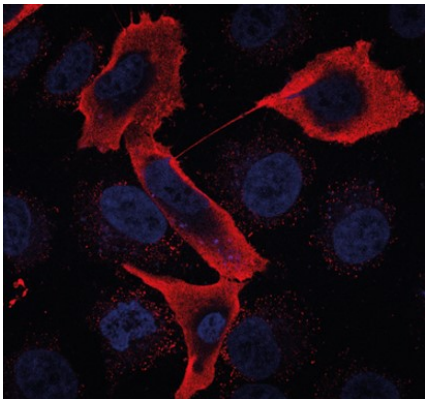
Properties

Form	Liquid
Purification	Purification with Protein G.
Buffer	PBS (pH 7.4), 50% Glycerol and 0.09% Sodium azide
Preservative	0.09% Sodium azide
Stabilizer	50% Glycerol
Concentration	1 mg/ml
Storage instruction	For continuous use, store undiluted antibody at 2-8°C for up to a week. For long-term storage, aliquot and store at -20°C. Storage in frost free freezers is not recommended. Avoid repeated freeze/thaw cycles. Suggest spin the vial prior to opening. The antibody solution should be gently mixed before use.

Bioinformation

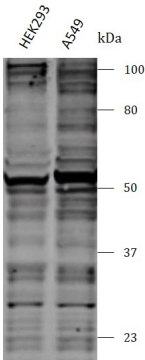
Gene Full Name	Protein Phosphatase, Mg2+/Mn2+ Dependent 1H
Background	Enables identical protein binding activity and phosphoprotein phosphatase activity. Predicted to be involved in protein dephosphorylation. Located in cytoplasm and nucleoplasm.
Function	Dephosphorylates CDKN1B at 'Thr-187', thus removing a signal for proteasomal degradation.
Calculated Mw	56 kDa
PTM	Methylation, Phosphoprotein
Cellular Localization	Cytoplasm, Nucleus

Images



ARG24168 anti-PPM1H antibody [10D2] [AH36] ICC/IF image

Immunofluorescence: A549 stained with ARG24168 anti-PPM1H antibody [10D2] at 1:1000 dilution.



ARG24168 anti-PPM1H antibody [10D2] WB image

Western blot: HEK293 and A549 stained with ARG24168 anti-PPM1H antibody [10D2] at 1:1000 dilution.