

## ARG30024 Phospho CREB (pS133) / Phospho beta Catenin (pS37) Antibody Duo

Package: 1 pair  
Store at: -20°C

### Component

Cat. No.	Component Name	Host clonality	Reactivity	Application	Package
ARG51556	anti-CREB phospho (Ser133) antibody	Rabbit pAb	Hu, Ms, Rat	IHC-P, WB	50 µl
ARG51710	anti-beta Catenin phospho (Ser37) antibody	Rabbit pAb	Hu, Ms, Rat	IHC-P, WB	50 µl

### Summary

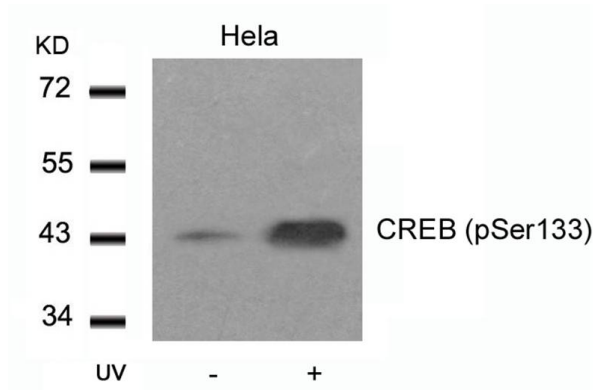
Product Description	Constitutively active GSK-3 acts to destabilize beta catenin through phosphorylation (Ser37), thus, functioning as a tumor suppressor to limit proliferation. In contrast, GSK-3 promotes expansion of leukemic cells transformed by HOX overexpression through phosphorylation of CREB (Ser133) and subsequent formation of a transcriptional coactivator complex. (Cancer Cell 17, June 15, 2010)
	Arigo provide CREB / beta Catenin phospho Duos, ARG30024, which include beta catenin (phosphor Ser37) antibody and CREB (phosphor Ser133) antibody for researchers to analysis the downstream protein and the pathway of active-GSK-3
Target Name	CREB / beta Catenin
Alternate Names	Phospho CREB (pS133) / Phospho beta Catenin (pS37) antibody; Phospho cAMP responsive element binding protein (pS133) / Phospho beta Catenin (pS37) antibody; CREB phospho (Ser133) antibody; beta Catenin phospho (Ser37) antibody

### Properties

Storage instruction	For continuous use, store undiluted antibody at 2-8°C for up to a week. For long-term storage, aliquot and store at -20°C or below. Storage in frost free freezers is not recommended. Avoid repeated freeze/thaw cycles. Suggest spin the vial prior to opening. The antibody solution should be gently mixed before use.
Note	For laboratory research only, not for drug, diagnostic or other use.

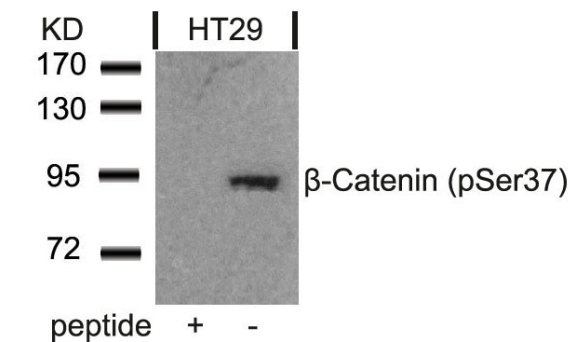
### Bioinformation

Gene Full Name	Phospho cAMP responsive element binding protein (CREB) (pS133) / Phospho beta Catenin (pS37) Antibody Duo
Research Area	Cancer antibody; Cell Biology and Cellular Response antibody; Developmental Biology antibody; Gene Regulation antibody; Immune System antibody; Neuroscience antibody; Signaling Transduction antibody



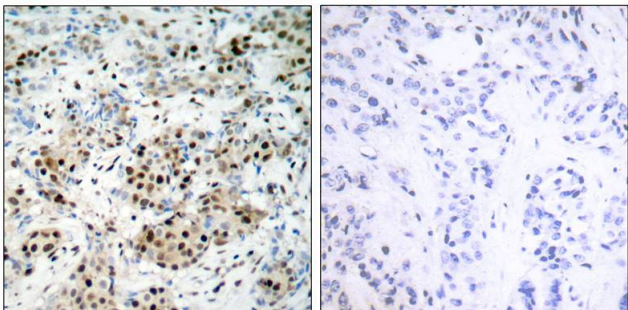
ARG51556 anti-CREB phospho (Ser133) antibody WB image

Western Blot: extracts from HeLa cells untreated or treated with UV stained with anti-CREB (phospho Ser133) antibody ARG51556.



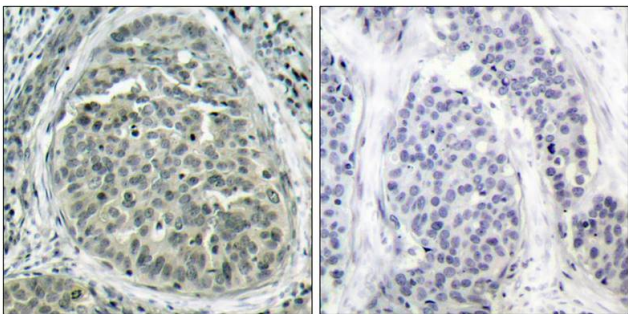
ARG51710 anti-beta Catenin phospho (Ser37) antibody WB image

Western Blot: extracts from HT29 cells stained with anti-beta Catenin (phospho Ser37) antibody ARG51710 and the same antibody preincubated with blocking peptide .



ARG51556 anti-CREB phospho (Ser133) antibody IHC-P image

Immunohistochemistry: paraffin-embedded human breast carcinoma tissue stained with anti-CREB (phospho Ser133) antibody ARG51556 (left) or the same antibody preincubated with blocking peptide (right).



ARG51710 anti-beta Catenin phospho (Ser37) antibody IHC-P image

Immunohistochemistry: paraffin-embedded human breast carcinoma tissue stained with anti-beta Catenin (phospho Ser37) antibody ARG51710 (left) or the same antibody preincubated with blocking peptide (right).