

ARG30025 Phospho FAK Antibody Duo (pY576/577, pY925)

Package: 1 pair
Store at: -20°C

Component

Cat. No.	Component Name	Host clonality	Reactivity	Application	Package
ARG51624	anti-FAK phospho (Tyr925) antibody	Rabbit pAb	Hu, Ms, Rat	ICC/IF, WB	50 µl
ARG51831	anti-FAK phospho (Tyr576 / Tyr577) antibody	Rabbit pAb	Hu, Ms, Rat	ICC/IF, WB	50 µl

Summary

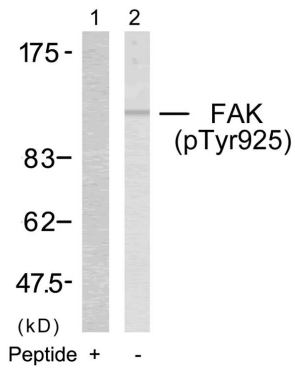
Product Description	Focal Adhesion Kinase (FAK), also known as PTK2 protein tyrosine kinase 2 (PTK2), is a non-receptor protein-tyrosine kinase that plays an essential role in regulating cell migration, adhesion, spreading, reorganization of the actin cytoskeleton, formation and disassembly of focal adhesions and cell protrusions, cell cycle progression, cell proliferation and apoptosis. Increased levels of FAK and Src proteins found in tumors and the importance of the FAK-Src signaling complex to tumor cell behavior, in addition, phosphorylation of FAK Tyr925 is a Src-dependent phosphorylation. Therefore, suggests that phosphorylation of Tyr925 on FAK may provide a useful indicator of increased signaling through the Src-FAK signaling complex in tumors. On the other hand, a RET-FAK transactivation mechanism consisting of direct phosphorylation of FAK Tyr-576/577 by RET but not Tyr925 and a reciprocal phosphorylation of RET by FAK. To study the correction of FAK and your protein of interest, ARG30025 FAK phospho Duos provides antibodies to detect the phosphorylated-FAK at Tyr576/577 or Tyr925 for the user in FAK study.
Target Name	FAK
Alternate Names	Phospho FAK antibody; Phospho Focal adhesion kinase antibody; FAK phospho (Tyr925) antibody; FAK phospho (Tyr576 / Tyr577) antibody

Properties

Storage instruction	For continuous use, store undiluted antibody at 2-8°C for up to a week. For long-term storage, aliquot and store at -20°C or below. Storage in frost free freezers is not recommended. Avoid repeated freeze/thaw cycles. Suggest spin the vial prior to opening. The antibody solution should be gently mixed before use.
Note	For laboratory research only, not for drug, diagnostic or other use.

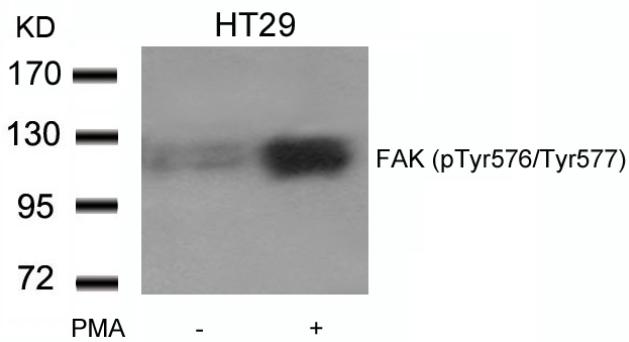
Bioinformation

Gene Full Name	Phospho Focal adhesion kinase (FAK) Antibody Duo (pY576/577, pY925)
Research Area	Cancer antibody; Cell Biology and Cellular Response antibody; Signaling Transduction antibody



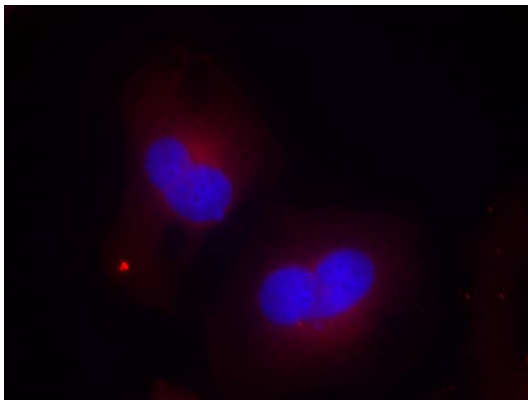
ARG51624 anti-FAK phospho (Tyr925) antibody WB image

Western Blot: extracts from 293 cells stained with anti-FAK (phospho Tyr925) antibody ARG51624 (Lane 2) and the same antibody preincubated with blocking peptide (Lane1).



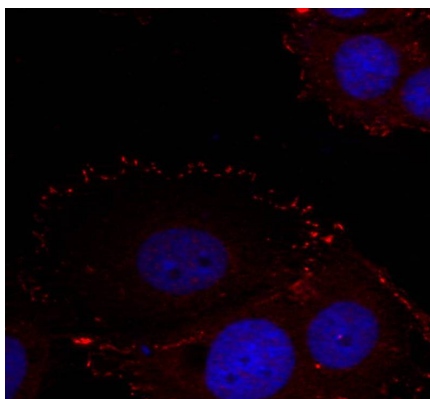
ARG51831 anti-FAK phospho (Tyr576 Tyr577) antibody WB image

Western Blot: extracts from HT29 cells untreated or treated with PMA stained with anti-FAK (phospho Tyr576 Tyr577) antibody ARG51831.



ARG51624 anti-FAK phospho (Tyr925) antibody ICC/IF image

Immunofluorescence: methanol-fixed HeLa cells stained with anti-FAK (phospho Tyr925) antibody ARG51624.



ARG51831 anti-FAK phospho (Tyr576 Tyr577) antibody ICC/IF image

Immunofluorescence: methanol-fixed HeLa cells stained with anti-FAK (phospho Tyr576 Tyr577) antibody ARG51831.