

ARG30037 Phospho IκB alpha Antibody Duo (Total, pS32/36)

Package: 1 pair
Store at: -20°C

Component

Cat. No.	Component Name	Host clonality	Reactivity	Application	Package
ARG51651	anti-IκB alpha phospho (Ser32 / Ser36) antibody	Rabbit pAb	Hu, Ms, Rat	ICC/IF, IHC-P, WB	50 μl
ARG40630	anti-IκB alpha antibody	Rabbit pAb	Hu, Ms, Rat	ICC/IF, IHC-P, IP, WB	50 μl

Summary

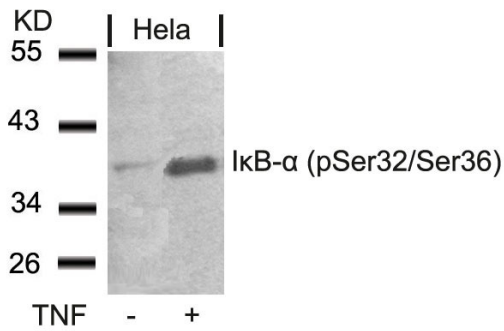
Product Description	<p>IκB-α inhibits the activity of dimeric NF-kappa-B/REL complexes by trapping REL dimers in the cytoplasm through masking of their nuclear localization signals. On cellular stimulation by immune and proinflammatory responses, triggers IκB-α phosphorylated at Ser32/36 and promotes IκB-α ubiquitination and degradation, enabling the dimeric NFκB to translocate to the nucleus and activate transcription.</p> <p>ARG30037 IκB-α phospho Duos (Total, pS32/36), includes an antibody reacts total IκB-α protein and an antibody recognizes IκB-α only when Ser32/36 of IκB-α is phosphorylated. This antibody Duos could be used in evaluation of total or Ser32/36 phosphorylated IκB-α protein in IκB-α/NFκB signaling and IκB-α/NFκB regulation studies.</p>
Target Name	IκB alpha
Alternate Names	Phospho IκB alpha antibody; Phospho nuclear factor of kappa light polypeptide gene enhancer in B-cells inhibitor alpha antibody; IκB alpha phospho (Ser32 / Ser36) antibody; IκB alpha antibody (N-term)

Properties

Storage instruction	For continuous use, store undiluted antibody at 2-8°C for up to a week. For long-term storage, aliquot and store at -20°C or below. Storage in frost free freezers is not recommended. Avoid repeated freeze/thaw cycles. Suggest spin the vial prior to opening. The antibody solution should be gently mixed before use.
Note	For laboratory research only, not for drug, diagnostic or other use.

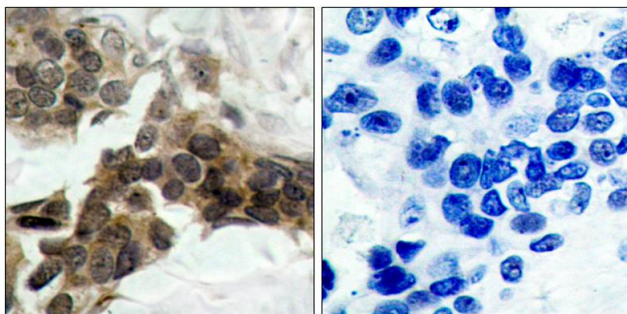
Bioinformation

Gene Full Name	Phospho nuclear factor of kappa light polypeptide gene enhancer in B-cells inhibitor, alpha (IκB alpha) Antibody Duo (Total, pS32/36)
Research Area	Cancer antibody; Gene Regulation antibody; Immune System antibody; Signaling Transduction antibody



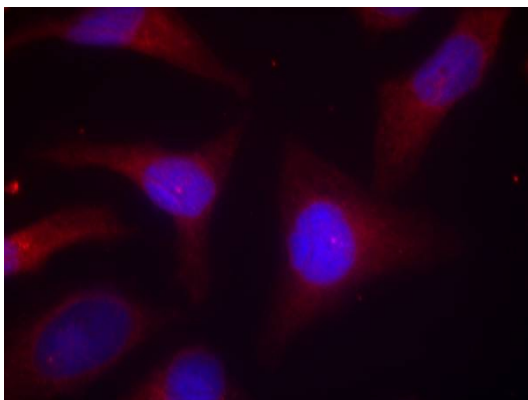
ARG51651 anti-IκB alpha phospho (Ser32/Ser36) antibody WB image

Western Blot: extracts from HeLa cells untreated or treated with TNF stained with anti-I kappa B alpha (phospho Ser32/Ser36) antibody ARG51651.



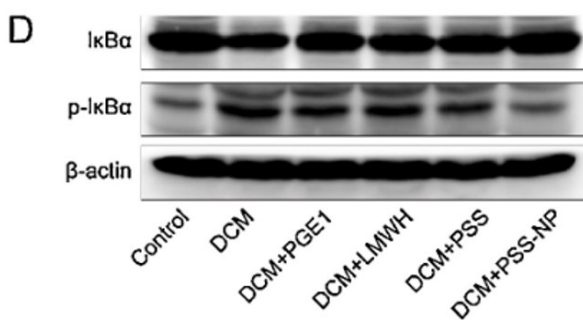
ARG51651 anti-IκB alpha phospho (Ser32/Ser36) antibody IHC-P image

Immunohistochemistry: paraffin-embedded human breast carcinoma tissue stained with anti-I kappa B alpha (phospho Ser32/Ser36) antibody ARG51651 (left) or the same antibody preincubated with blocking peptide (right).



ARG51651 anti-IκB alpha phospho (Ser32/Ser36) antibody ICC/IF image

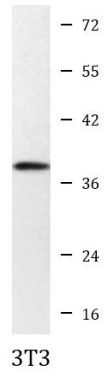
Immunofluorescence: methanol-fixed HeLa cells stained with anti-I kappa B alpha (phospho Ser32/Ser36) antibody ARG51651.



ARG51651 anti-IκB alpha phospho (Ser32 / Ser36) antibody WB image

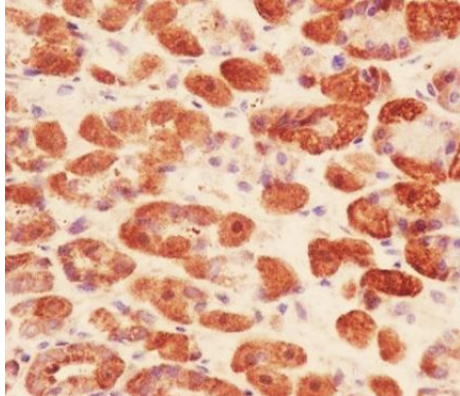
Western blot: Rat cardiac stained with ARG51651 anti-IκB alpha phospho (Ser32 / Ser36) antibody at dilution.

From Yongjun Mao et al. Biomed Pharmacother. (2020), [doi: 10.1016/j.biopha.2019.109280](https://doi.org/10.1016/j.biopha.2019.109280), Fig. 6D.



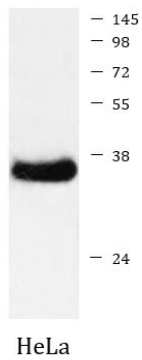
ARG54059 anti-IkB alpha antibody (N-term) WB image

Western blot: 3T3 cell lysate stained with ARG54059 anti-IkB alpha antibody (N-term) at 1:500 dilution.



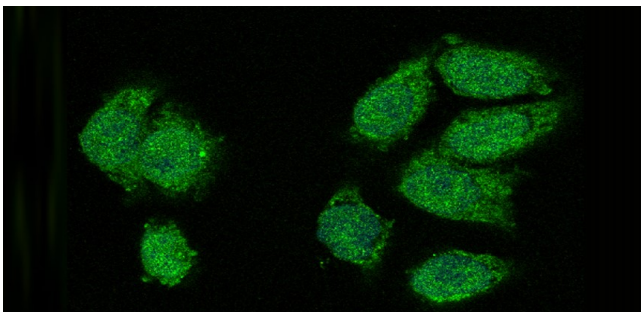
ARG40630 anti-IκB alpha antibody IHC-P image

Immunohistochemistry: Paraffin-embedded Mouse stomach tissue stained with ARG40630 anti-IκB alpha antibody.



ARG40630 anti-IκB alpha antibody WB image

Western blot: HeLa cell lysate stained with ARG40630 anti-IκB alpha antibody.



ARG40630 anti-IκB alpha antibody ICC/IF image

Immunofluorescence: HeLa stained with ARG40630 anti-IκB alpha antibody.