

ARG30095 Endothelial Cell Marker Antibody Duo (CD31, CD34)

Package: 1 pair
Store at: -20°C

Component

Cat. No.	Component Name	Host clonality	Reactivity	Application	Package
ARG52756	anti-CD34 antibody [QBEND/10]	Mouse mAb	Hu, Ms, NHuPrm, Rb	FACS, ICC/IF, IHC-P, IHC-50 µl Fr, IP, WB	

Summary

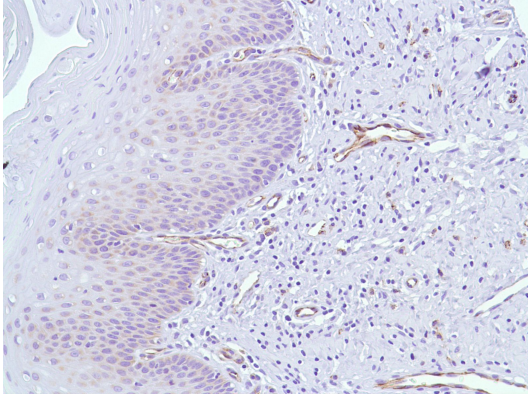
Product Description	<p>Cells expressing CD34 (CD34+ cell) are normally found in the umbilical cord and bone marrow as hematopoietic cells, a subset of mesenchymal stem cells, endothelial progenitor cells, endothelial cells of blood vessels. CD34 is one of the Endothelial Cell Differentiation Markers and Endothelial Progenitor Cell Markers.</p> <p>CD31 is normally found on endothelial cells, platelets, macrophages and Kupffer cells, granulocytes, T / NK cells, lymphocytes, megakaryocytes, osteoclasts, neutrophils. In immunohistochemistry, CD31 is used primarily to demonstrate the presence of endothelial cells in histological tissue sections. This can help to evaluate the degree of tumour angiogenesis, which can imply a rapidly growing tumour. Malignant endothelial cells also commonly retain the antigen, so that CD31 immunohistochemistry can also be used to demonstrate both angiomas and angiosarcomas.</p> <p>ARG30095 Endothelial Cell Marker Duos, including antibodies react commonly used endothelial cell marker CD31 and CD34 for angiogenesis study.</p> <p>Related news: Vascular development is regulated by FGF-dependent metabolic control</p>
----------------------------	---

Properties

Storage instruction	For continuous use, store undiluted antibody at 2-8°C for up to a week. For long-term storage, aliquot and store at -20°C or below. Storage in frost free freezers is not recommended. Avoid repeated freeze/thaw cycles. Suggest spin the vial prior to opening. The antibody solution should be gently mixed before use.
Note	For laboratory research only, not for drug, diagnostic or other use.

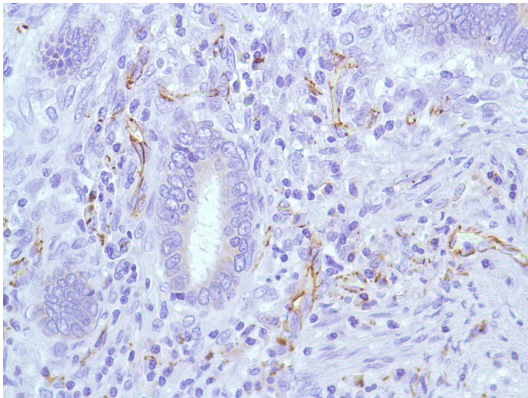
Bioinformation

Research Area	Cancer antibody; Cell Biology and Cellular Response antibody; Controls and Markers antibody; Developmental Biology antibody; Immune System antibody; Neuroscience antibody; Signaling Transduction antibody
----------------------	---



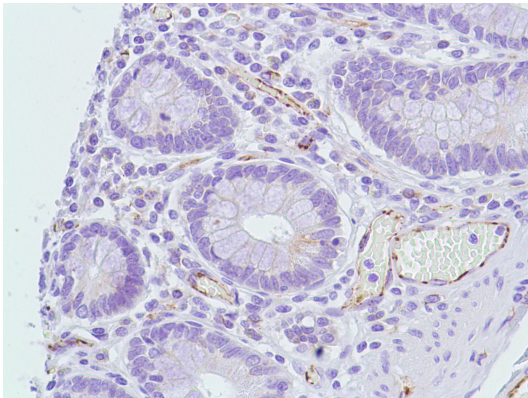
ARG52752 anti-CD31 antibody [SP38] IHC-P image

Immunohistochemistry: Human Cervix stained with CD31 antibody [SP38] (ARG52752)



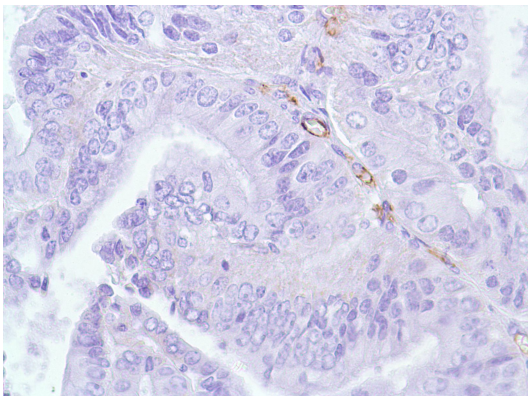
ARG52752 anti-CD31 antibody [SP38] IHC-P image

Immunohistochemistry: Human Colon Adenocarcinoma stained with CD31 antibody [SP38] (ARG52752)



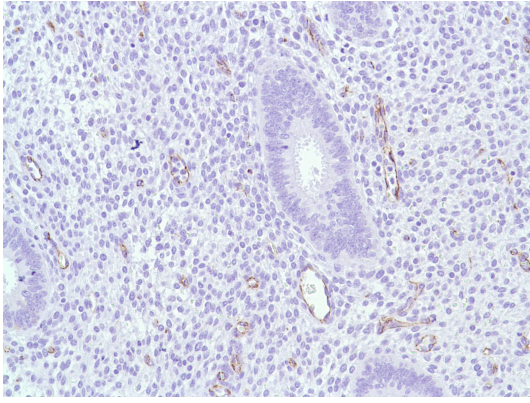
ARG52752 anti-CD31 antibody [SP38] IHC-P image

Immunohistochemistry: Human Colon stained with CD31 antibody [SP38] (ARG52752)



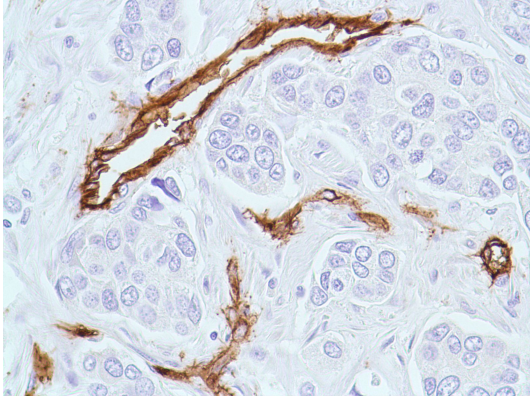
ARG52752 anti-CD31 antibody [SP38] IHC-P image

Immunohistochemistry: Human Endometrial Adenocarcinoma stained with CD31 antibody [SP38] (ARG52752)



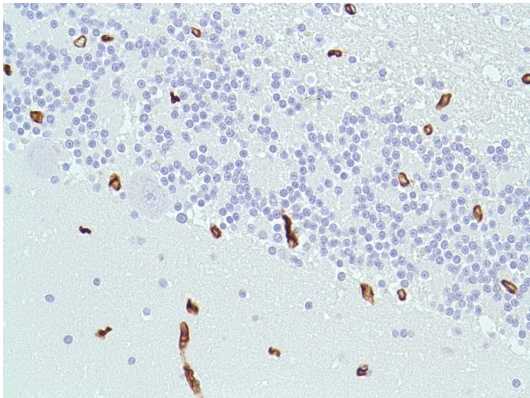
ARG52752 anti-CD31 antibody [SP38] IHC-P image

Immunohistochemistry: Human Endometrium stained with CD31 antibody [SP38] (ARG52752)



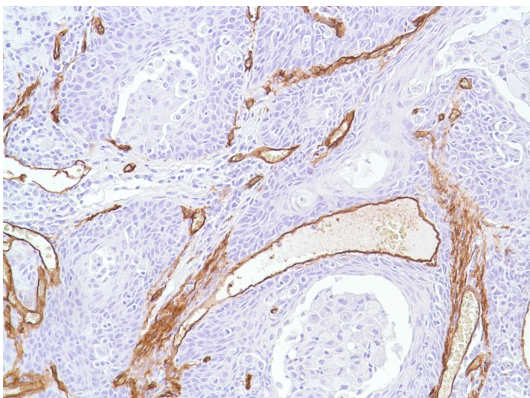
ARG52756 anti-CD34 antibody [QBEND/10] IHC-P image

Immunohistochemistry: Human Breast Ductal Carcinoma stained with CD34 (Endothelial Cell Marker) antibody [QBEnd/10] (ARG52756)



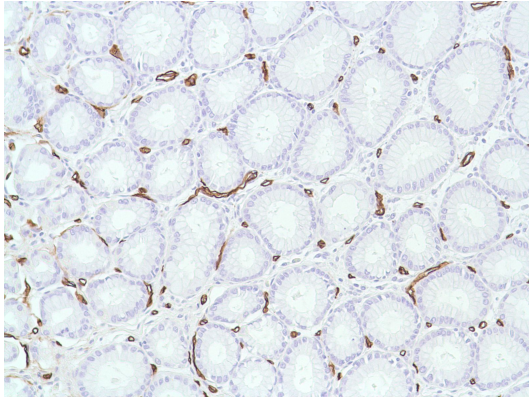
ARG52756 anti-CD34 antibody [QBEND/10] IHC-P image

Immunohistochemistry: Human Cerebellum stained with CD34 (Endothelial Cell Marker) antibody [QBEnd/10] (ARG52756)



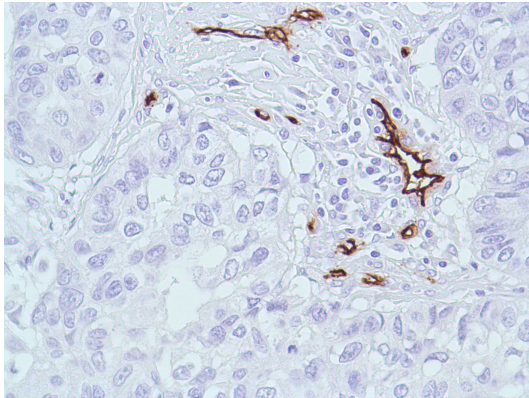
ARG52756 anti-CD34 antibody [QBEND/10] IHC-P image

Immunohistochemistry: Human Cervical Squamous Cell carcinoma stained with CD34 (Endothelial Cell Marker) antibody [QBEnd/10] (ARG52756)



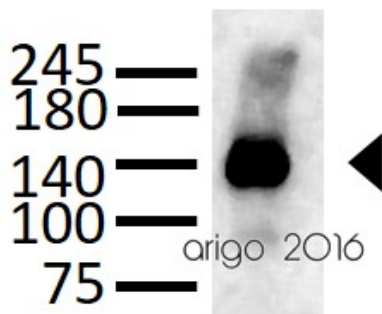
ARG52756 anti-CD34 antibody [QBEND/10] IHC-P image

Immunohistochemistry: Human Colon stained with CD34 (Endothelial Cell Marker) antibody [QBEnd/10] (ARG52756)



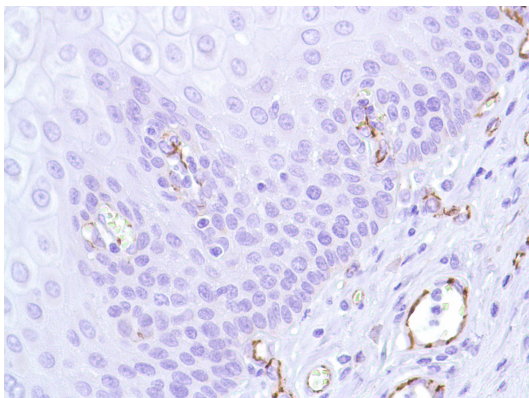
ARG52756 anti-CD34 antibody [QBEND/10] IHC-P image

Immunohistochemistry: Human Lung Squamous Cell Carcinoma stained with CD34 (Endothelial Cell Marker) antibody [QBEnd/10] (ARG52756)



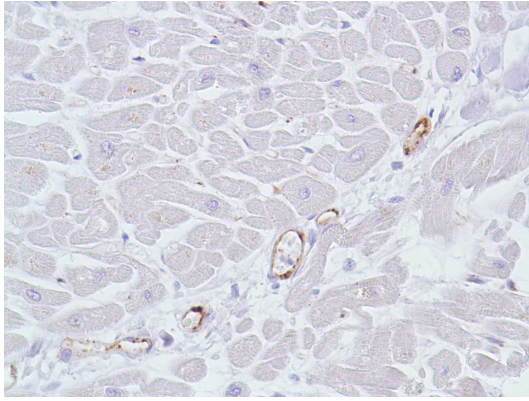
ARG52752 anti-CD31 antibody [SP38] WB image

Western blot: 30 μ g of HUVEC cell lysate stained with ARG52752 anti-CD31 antibody [SP38] at 1:500 dilution.



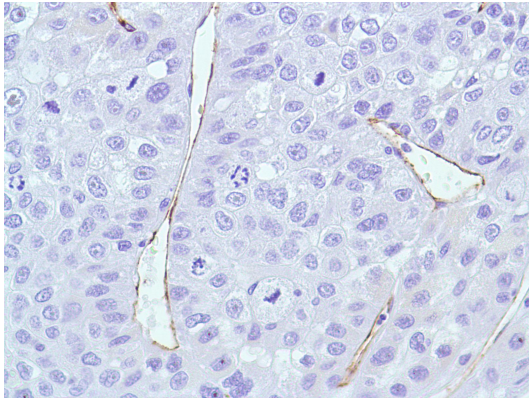
ARG52752 anti-CD31 antibody [SP38] IHC-P image

Immunohistochemistry: Human Esophagus stained with CD31 antibody [SP38] (ARG52752)



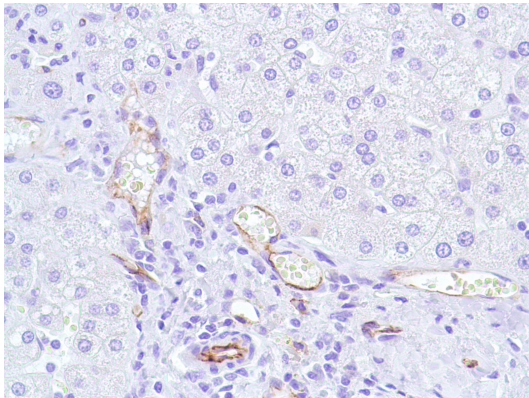
ARG52752 anti-CD31 antibody [SP38] IHC-P image

Immunohistochemistry: Human Heart stained with CD31 antibody [SP38] (ARG52752)



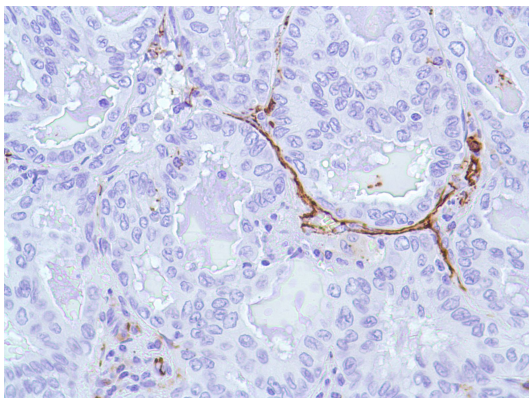
ARG52752 anti-CD31 antibody [SP38] IHC-P image

Immunohistochemistry: Human Liver Hepatocellular Carcinoma stained with CD31 antibody [SP38] (ARG52752)



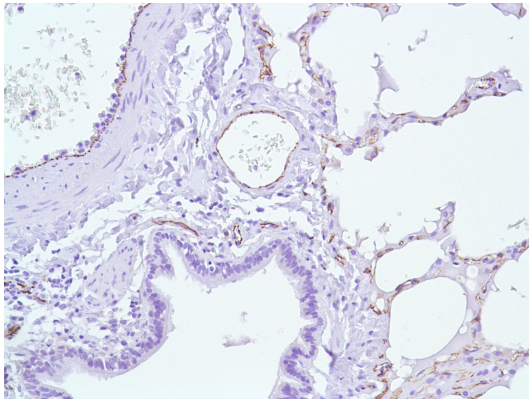
ARG52752 anti-CD31 antibody [SP38] IHC-P image

Immunohistochemistry: Human Liver stained with CD31 antibody [SP38] (ARG52752)



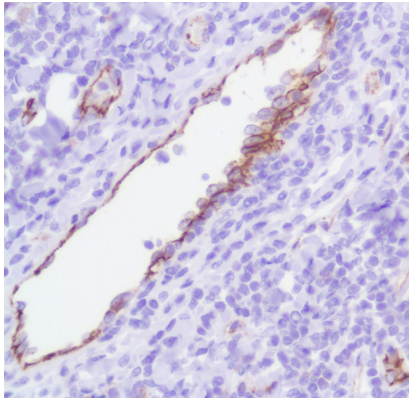
ARG52752 anti-CD31 antibody [SP38] IHC-P image

Immunohistochemistry: Human Lung Adenocarcinoma stained with CD31 antibody [SP38] (ARG52752)



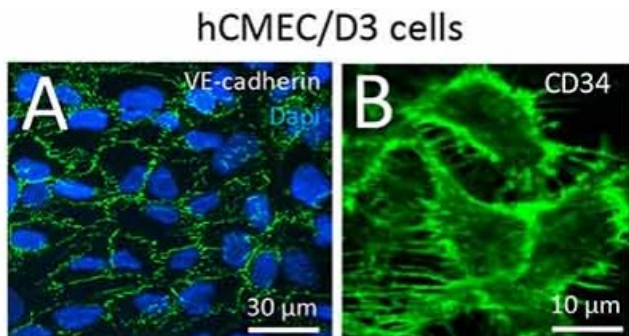
ARG52752 anti-CD31 antibody [SP38] IHC-P image

Immunohistochemistry: Human Lung stained with CD31 antibody [SP38] (ARG52752)



ARG52752 anti-CD31 antibody [SP38] IHC-P image

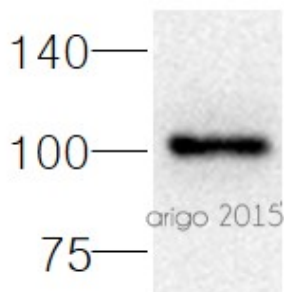
Immunohistochemistry: Human Tonsil stained with CD31 antibody [SP38] (ARG52752)



ARG52756 anti-CD34 antibody [QBEND/10] ICC/IF image

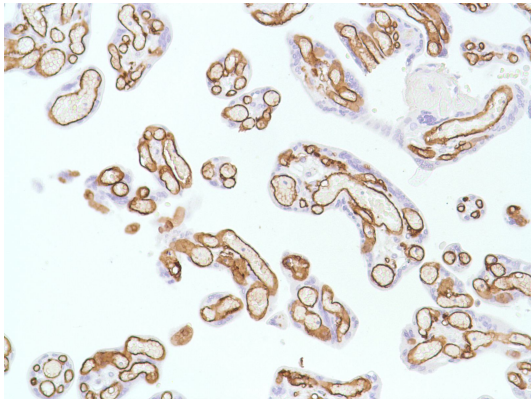
Immunofluorescence: hCMEC/D3 cells stained with ARG52756 anti-CD34 antibody [QBEND/10].

From Lucie Y Li et al. *Front Cell Neurosci.* (2023), [doi: 10.3389/fncel.2023.1077204](https://doi.org/10.3389/fncel.2023.1077204), Fig. 3A & B.



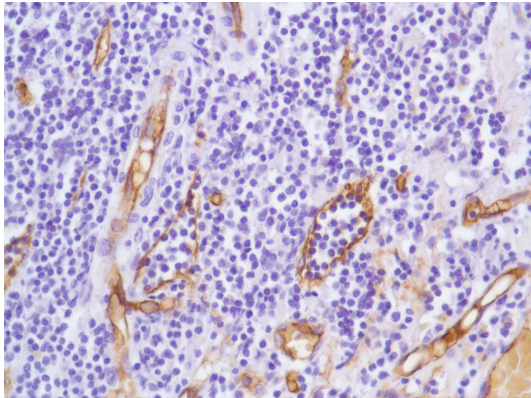
ARG52756 anti-CD34 antibody [QBEND/10] WB image

Western blot: 30 μ g of mouse lung lysate stained with ARG52756 anti-CD34 antibody [QBEND/10] at 1:500 dilution.



ARG52756 anti-CD34 antibody [QBEND/10] IHC-P image

Immunohistochemistry: Human Placenta stained with CD34 (Endothelial Cell Marker) antibody [QBEnd/10] (ARG52756)



ARG52756 anti-CD34 antibody [QBEND/10] IHC-P image

Immunohistochemistry: Human Tonsil stained with CD34 (Endothelial Cell Marker) antibody [QBEnd/10] (ARG52756)
