

## ARG30155 Phospho Smad1 for Activation / Inhibition site Antibody Panel

Package: 1 kit  
Store at: -20°C

### Component

Cat. No.	Component Name	Host clonality	Reactivity	Application	Package
ARG51284	anti-Smad 1 antibody	Rabbit pAb	Hu, Ms, Rat	ICC/IF, WB	50 µl
ARG51848	anti-Smad 1 phospho (Ser206) antibody	Rabbit pAb	Hu, Ms, Rat	WB	50 µl
ARG51794	anti-Smad 1 phospho (Ser465) antibody	Rabbit pAb	Hu, Ms, Rat	WB	50 µl
ARG65351	Goat anti-Rabbit IgG antibody (HRP)	Goat pAb	Rb	ELISA, IHC-P, WB	50 µl

### Summary

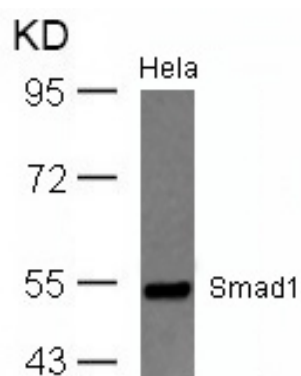
Product Description	Smad transcription factors convey downstream messages from the most versatile cytokine signaling pathways in the multicellular life forms, the transforming growth factor- $\beta$ (TGF $\beta$ ) pathway. Recent works has shed light into the processes and functions of SMAD activation and deactivation, nucleocytoplasmic dynamics, and assembly of transcriptional complexes. Smad proteins consist of two globular domains coupled by a linker region. Smad1 can be phosphorylated at the linker region (pSer206) where recruitment of Smurf takes place and results in the degradation of Smad1. On the other hands, phosphorylation of Smad1 at pSer465 translocate Smad1/Smad4 complex to nucleus and transcriptionally activate target genes. Whiteman et al. (1993) Genes Dev 12:2445-62 Massagué J et al. (2005) Genes Dev 19: 2783-2810 Sapkota et al. (2007) Mol Cell 25: 441-454
Target Name	Smad1 for Activation / Inhibition site
Alternate Names	Phospho Smad1 for Activation / Inhibition site antibody; Smad 1 antibody; Smad 1 phospho (Ser465) antibody; Smad 1 phospho (Ser206) antibody

### Properties

Storage instruction	For continuous use, store undiluted antibody at 2-8°C for up to a week. For long-term storage, aliquot and store at -20°C or below. Storage in frost free freezers is not recommended. Avoid repeated freeze/thaw cycles. Suggest spin the vial prior to opening. The antibody solution should be gently mixed before use.
Note	For laboratory research only, not for drug, diagnostic or other use.

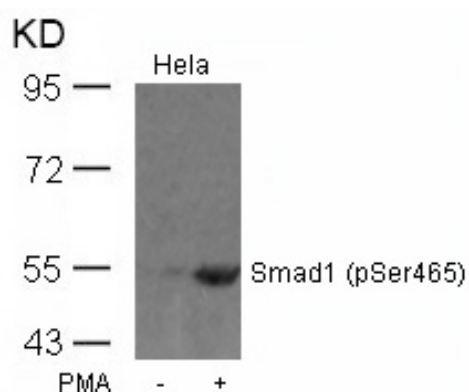
### Bioinformation

Gene Full Name	Antibody Panel for Phospho Smad1 for Activation / Inhibition site
Research Area	Cancer antibody; Developmental Biology antibody; Gene Regulation antibody; Immune System antibody; Metabolism antibody; Signaling Transduction antibody



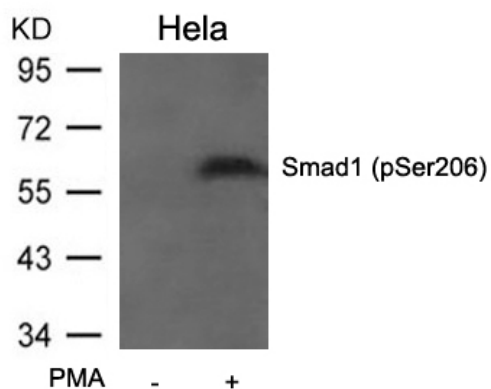
ARG51284 anti-Smad1 antibody WB image

Western Blot: extracts from HeLa cells stained with anti-Smad1 antibody ARG51284.



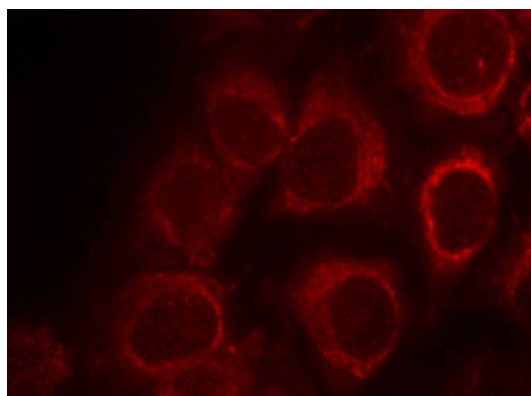
ARG51794 anti-Smad1 phospho (Ser465) antibody WB image

Western Blot: extracts from HeLa cells untreated or treated with PMA stained with anti-Smad1 (phospho Ser465) antibody ARG51794.



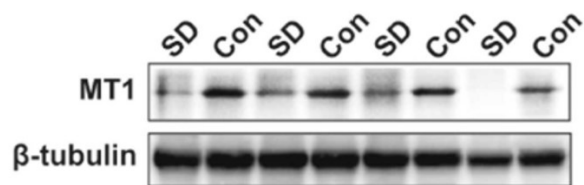
ARG51848 anti-Smad1 phospho (Ser206) antibody WB image

Western Blot: extracts from HeLa cells untreated or treated with PMA stained with anti-Smad1 (phospho Ser206) antibody ARG51848.



ARG51284 anti-Smad1 antibody ICC/IF image

Immunofluorescence: methanol-fixed HeLa cells stained with anti-Smad1 antibody ARG51284.



ARG65351 Goat anti-Rabbit IgG antibody (HRP) WB image

Western blot: Rat placental stained with [ARG57589 anti-MTNR1A antibody](#) at 1:1000 dilution, ARG65351 Goat anti-Rabbit IgG antibody (HRP) at 1:5000 dilution.

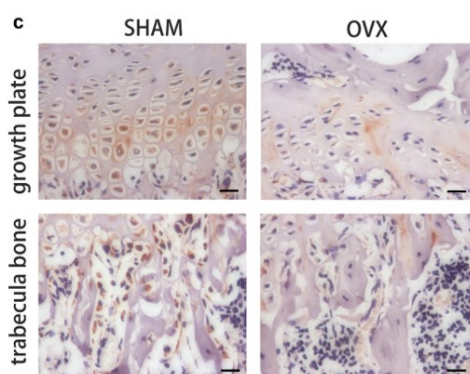
From Jinzhi Li et al. J Reprod Immunol. (2023), [doi: 10.1016/j.jri.2023.104166](#), Fig. 2.B.



ARG65351 Goat anti-Rabbit IgG antibody (HRP) WB image

Western blot: Mouse retina stained with [ARG65693 anti-alpha Tubulin antibody](#) and ARG65351 Goat anti-Rabbit IgG antibody (HRP)

From Xiaoyuan Ye et al. Mol Ther Nucleic Acids. (2024), [doi: 10.1016/j.omtn.2024.102209](#), Fig. 5.D.



ARG65351 Goat anti-Rabbit IgG antibody (HRP) IHC-P image

From Yu-Qian Song et al. J Mol Med (Berl) (2022), [doi: 10.1007/s00109-021-02165-0](#), Fig. 5.c.