

ARG30170 Phospho Src Antibody Panel

Package: 1 kit
Store at: -20°C

Component

Cat. No.	Component Name	Host clonality	Reactivity	Application	Package
ARG54712	anti-Src antibody	Mouse mAb	Hu, Ms	ICC/IF, WB	50 µl
ARG51594	anti-Src phospho (Tyr418) antibody	Rabbit pAb	Hu, Ms, Rat	IHC-P, WB	50 µl
ARG51652	anti-Src phospho (Tyr529) antibody	Rabbit pAb	Hu, Ms, Rat	ICC/IF, IHC-P, WB	50 µl
ARG65350	Goat anti-Mouse IgG antibody (HRP)	Goat pAb	Ms	ELISA, IHC-P, WB	50 µl
ARG65351	Goat anti-Rabbit IgG antibody (HRP)	Goat pAb	Rb	ELISA, IHC-P, WB	50 µl

Summary

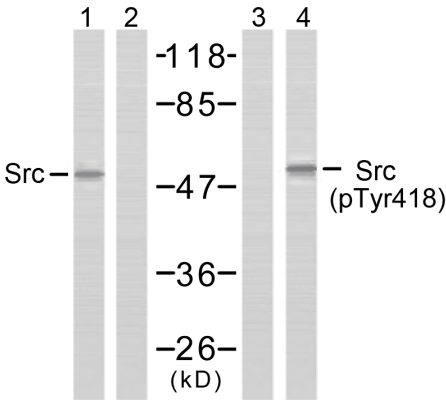
Product Description	<p>Src and Src-family protein-tyrosine kinases are regulatory proteins that play key roles in cell differentiation, motility, proliferation, and survival. The initially described phosphorylation sites of Src include an activating phosphotyrosine 418 that results from autophosphorylation, and an inhibiting phosphotyrosine 529 that results from phosphorylation by C-terminal Src kinase (Csk) and Csk homologous kinase. Dephosphorylation of phosphotyrosine 529 increases Src kinase activity. This antibody panel can be used for determine the activity of Src by different specific phosphorylation site.</p> <p>Wu S.S. et al. (2005) Cellular Signalling 17, 93-102. Obergfell A. et al. (2002) JCB 157, 265-275. Zhao M. et al. (2006) Mol. Cell. Biol. 26, 2479-2489.</p>
Target Name	Src
Alternate Names	Phospho Src antibody; Src phospho (Tyr418) antibody; Src phospho (Tyr529) antibody; Src antibody

Properties

Storage instruction	For continuous use, store undiluted antibody at 2-8°C for up to a week. For long-term storage, aliquot and store at -20°C or below. Storage in frost free freezers is not recommended. Avoid repeated freeze/thaw cycles. Suggest spin the vial prior to opening. The antibody solution should be gently mixed before use.
Note	For laboratory research only, not for drug, diagnostic or other use.

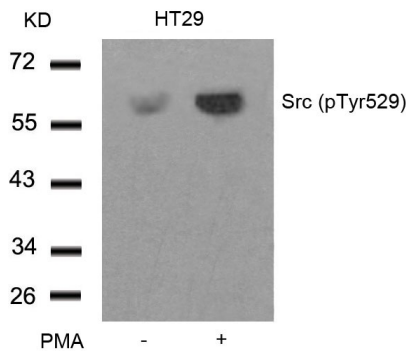
Bioinformation

Gene Full Name	Antibody Panel for Phospho Src
Research Area	Cancer antibody; Gene Regulation antibody; Immune System antibody; Metabolism antibody; Signaling Transduction antibody



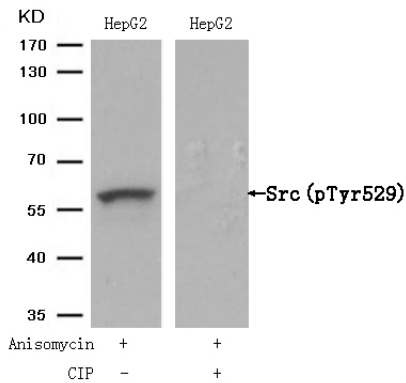
ARG51594 anti-Src phospho (Tyr418) antibody WB image

Western Blot: extracts from COLO205 cells stained with Src antibody (Lane 1 and 2) and Src (phospho-Tyr418) antibody (ARG51594, Lane 3 and 4).



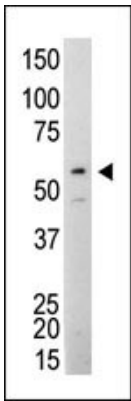
ARG51652 anti-Src phospho (Tyr529) antibody WB image

Western Blot: extracts from HT29 cells untreated or treated with PMA stained with anti-Src (phospho Tyr529) antibody ARG51652.



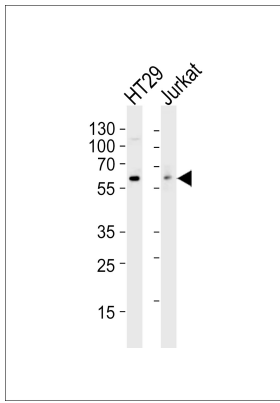
ARG51652 anti-Src phospho (Tyr529) antibody WB image

Western Blot: extracts from HepG2 cells, treated with Anisomycin or calf intestinal phosphatase (CIP), stained with anti-Src (phospho Tyr529) antibody ARG51652.



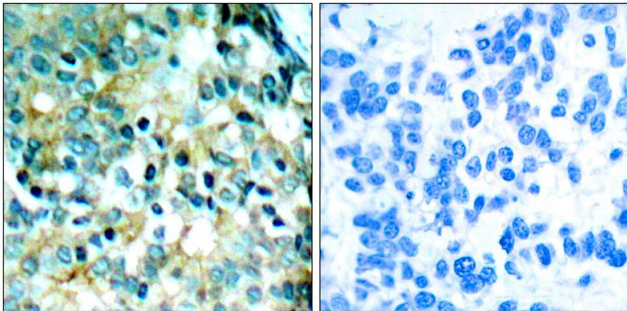
ARG54712 anti-SRC Antibody WB image

Western blot: Jurkat cell lysate stained with ARG54712 anti-SRC antibody.



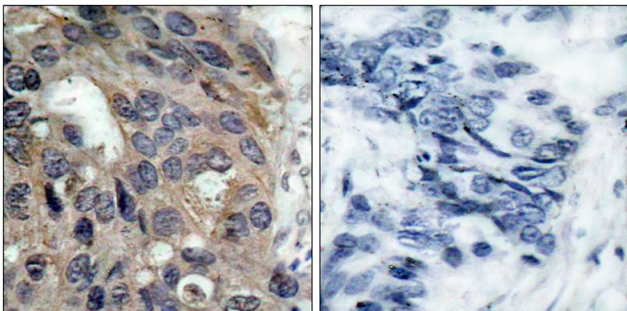
ARG54712 anti-SRC Antibody WB image

Western blot: 35 µg of HT29, Jurkat cell line lysates (from left to right) stained with ARG54712 anti-SRC antibody at 1:1000 dilution.



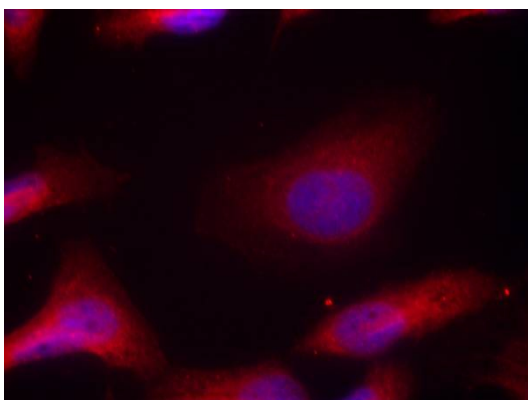
ARG51594 anti-Src phospho (Tyr418) antibody IHC-P image

Immunohistochemistry: paraffin- embedded human breast carcinoma tissue stained with anti-Src (phospho Tyr418) antibody ARG51594).



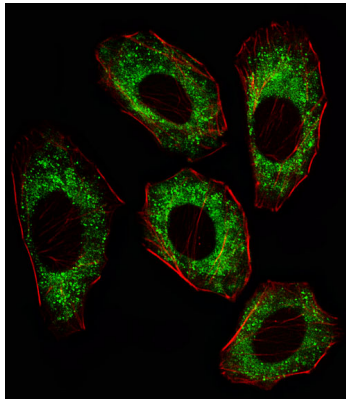
ARG51652 anti-Src phospho (Tyr529) antibody IHC-P image

Immunohistochemistry: paraffin-embedded human breast carcinoma tissue stained with anti-Src (phospho Tyr529) antibody ARG51652 (left) or the same antibody preincubated with blocking peptide (right).



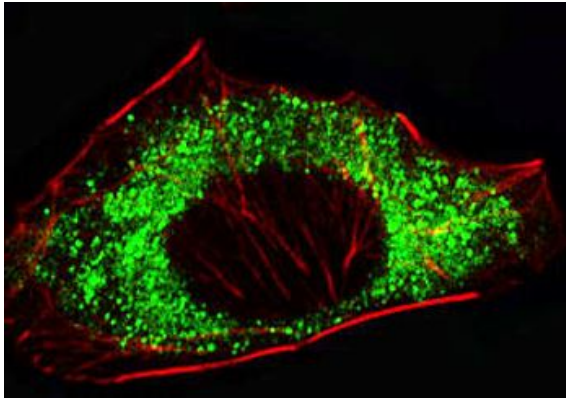
ARG51652 anti-Src phospho (Tyr529) antibody ICC/IF image

Immunofluorescence: methanol-fixed HeLa cells stained with anti-Src (phospho Tyr529) antibody ARG51652.



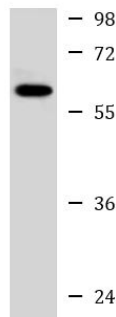
ARG54712 anti-SRC Antibody IF image

Immunofluorescence: A549 cell stained with ARG54712 anti-SRC antibody. A549 cells were fixed with 4% PFA (20 min), permeabilized with Triton X-100 (0.1%, 10 min), then incubated with SRC primary antibody (1:25, 1 h at 37°C). Cytoplasmic actin was counterstained with Alexa Fluor® 555 (red) conjugated Phalloidin (7units/ml, 1 h at 37°C). SRC immunoreactivity is localized to Cytoplasm significantly.



ARG54712 anti-SRC Antibody ICC/IF image

Immunofluorescence: A549 cells were fixed with 4% PFA (20 min), permeabilized with Triton X-100 (0.1%, 10 min), then stained with ARG54712 anti-SRC antibody (1:25, 1 h at 37°C). Cytoplasmic actin was counterstained with Alexa Fluor® 555 (red) conjugated Phalloidin (7 units/ml, 1 h at 37°C).

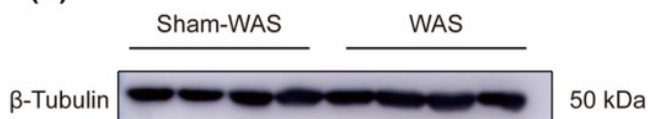


HT29

ARG54712 anti-SRC Antibody WB image

Western blot: 35 µg of HT29 cell lysate stained with ARG54712 anti-SRC antibody at 1:1000 dilution.

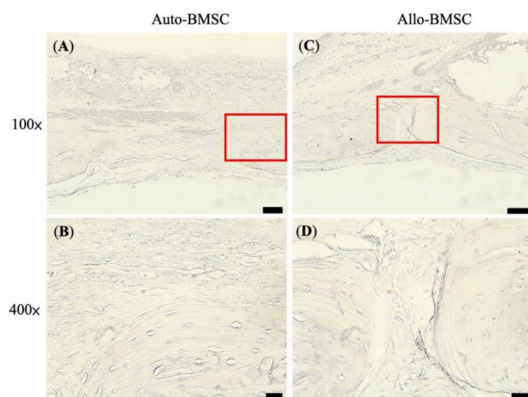
(D)



ARG65350 Goat anti-Mouse IgG antibody (HRP) WB image

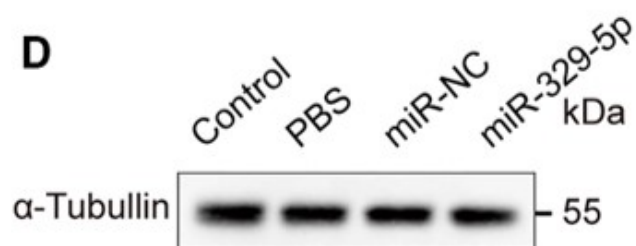
Western blot: Rat basolateral amygdala stained with [ARG62347 anti-beta Tubulin antibody \[BT7R\]](#) at 1:1000 dilution, ARG65350 Goat anti-Mouse IgG antibody (HRP) at 1:5000 dilution.

From Guang-Bing Duan et al. CNS Neurosci Ther. (2024), [doi: 10.1111/cns.14611](#), Fig. 4.D.



ARG65350 Goat anti-Mouse IgG antibody (HRP) IHC-P image

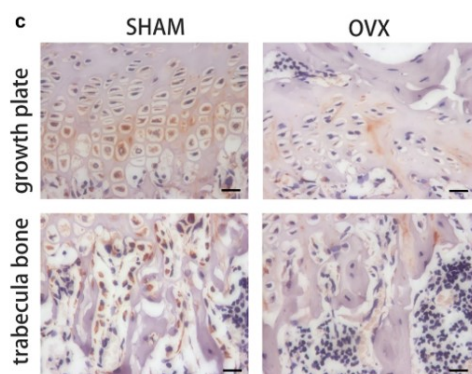
From Cheng-Feng Chu et al. J Pers Med. (2021), [doi: 10.3390/jpm11121326](https://doi.org/10.3390/jpm11121326), Fig. 6.



ARG65351 Goat anti-Rabbit IgG antibody (HRP) WB image

Western blot: Mouse retina stained with [ARG65693 anti-alpha Tubulin antibody](https://doi.org/10.3390/jpm11121326) and ARG65351 Goat anti-Rabbit IgG antibody (HRP)

From Xiaoyuan Ye et al. Mol Ther Nucleic Acids. (2024), [doi: 10.1016/j.omtn.2024.102209](https://doi.org/10.1016/j.omtn.2024.102209), Fig. 5.D.



ARG65351 Goat anti-Rabbit IgG antibody (HRP) IHC-P image

From Yu-Qian Song et al. J Mol Med (Berl) (2022), [doi: 10.1007/s00109-021-02165-0](https://doi.org/10.1007/s00109-021-02165-0), Fig. 5.c.